

PLSS CORNER RECORD

Corner 1/4 S9 | S10 T. 37 N. R. 27 W. P.M.M. LINCOLN County

- I. 1893 GLO Subdivision and Menders of fractional T. 37 N., R. 27 W. by Peter. M. Cardell and Abraham L. Jaqueth: Set a limestone, 13x11x8 ins., 9 ins. in the ground, for 1/4 sec. cor. marked 1/4 on W. face, from which:

A pine, 30 ins. diam, bears S37°E, 20 lks. dist., marked 1/4 S BT.
A pine, 10 ins. diam, bears S63°W, 125 lks. dist., marked 1/4 S BT.

1974 Certificate of Survey No. 75 by Harry P. Medland, MT Reg. No. 2229S: Found original GLO stone. Remains of original BT's found. Set 2 RM's:

16" pine, S74°E, 47.87'
12" pine, N18°W, 13.65'

1998 Certificate of Survey No. 134360 by Thomas E. Sands, MT Reg. No. 7975S: Found stone.

- II. Found the original GLO stone, 10"x8", 6" above ground, firmly set and marked 1/4 on West face, from which:

No original bearing trees found.

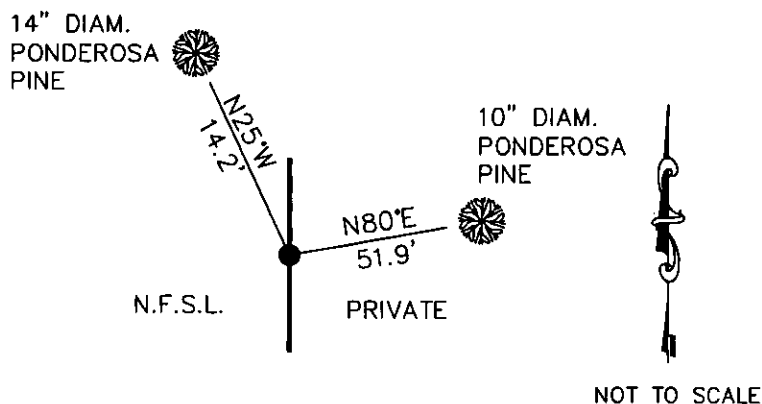
- III. Establish 2 new bearing trees:

A ponderosa pine, 10 ins. diam, bears N80°E, 51.9 ft. dist., mkd. 1/4 S10 BT.
A ponderosa pine, 14 ins. diam, bears N25°W, 14.2 ft. dist., mkd. 1/4 S9 BT.

Painted the scribed faces red and 6" red band on Bearing Trees. Attached Land Survey Monument and Bearing Tree signs. Set a 6 ft. steel guard post North and South, 3 ft. with Land Survey Monument and Property Boundary decals attached.

Date of Fieldwork: 8/14/2014
Survey crew: Tom Hommel
Magnetic declination: 14° East assumed
Equipment used: Hand compass and loggers tape

U.S. Forest Service, Supervisors Office, 31374 Hwy. 2, Libby, MT 59923 (406) 293-6211



CERTIFICATION

I, _____, certify the information shown herein is true and correct.

Signature Ground Party Chief

Thomas M. Hommel

I, _____, certify that this Corner Record correctly represents work performed by me or under my direction in compliance with the "Corner Recordation Act" (70-22-101, et seq., M.C.A.).

Signature of Surveyor & Seal

Date: 12/3/14 Reg. No. 10800LS

Employer: U. S. Forest Service

Office of Clerk and Recorder, County of Lincoln

Sec. 10

254906 BOOK: CCR CC&R'S PAGE: 12164 Pages:
STATE OF MONTANA LINCOLN COUNTY
RECORDED: 12/04/2014 12:09 KOI: CC&R'S
TAMMY D. LAUER CLERK AND RECORDER
FEE: \$0.00 BY: Clyde E. R. DePute
FOR: FILED

Cross Index No. G 13 T. 37N. R. 27W. P.M., MT