

PLSS CORNER RECORD

Corner 1/4 S10 S15 T. 37 N. R. 27 W. P.M.M. LINCOLN County

- I. 1893 GLO Subdivision and Menders of fractional T. 37 N., R. 27 W. by Peter, M. Cardell and Abraham L. Jaqueth: Set a sandstone, 16x18x4 ins., 11 ins. in the ground, for 1/4 sec. cor. marked 1/4 on N. face. Dug pits 18x18x12 ins. E and W of stone, 5 1/2 ft. dist., and raised a mound of earth 1 1/2 ft. high, 3 1/2 ft. base alongside.

1974 Certificate of Survey No. 75 by Harry P. Medland, MT Reg. No. 2229S: Found original GLo stone and original pits. Set 2 RM's:

24" pine, S70°W, 24.37'
10" pine, N26°W, 17.25'

1990 Certificate of Survey No. 1800 by Kenneth E. Davis, MT Reg. No. 4975S: Found original stone.

1995 P. F. No. 5304 by Dawn Marquardt, MT Reg. No. 7328S: Found stone 1/4 corner.

1997 P.F. No. 5832 & Correction P. F. No. 5832-A by Dawn Marquardt, MT Reg. No. 7328S: Found stone 1/4 corner per C.O.S. No. 1800.

1998 Certificate of Survey No. 134360 by Thomas E. Sands, MT Reg. No. 7975S: Found stone.

2003 Certificate of Survey No. 3200 by Alvah F. Hughes, MT Reg. No. 7322 LS: Found quarter corner. An original G.L.O. stone.

- II. Found the original GLO stone, 8"x4", 8" above ground, firmly set and marked 1/4 on North face, from which:

No original bearing trees found.

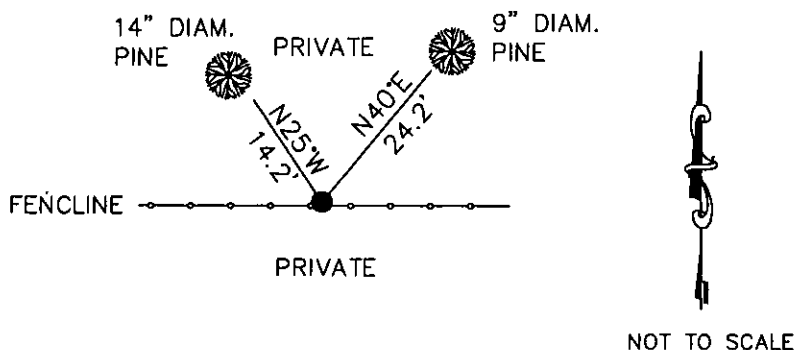
- III. Establish 2 new bearing trees:

A pine, 9 ins. diam, bears N40°E, 24.2 ft. dist., mkd. 1/4 S10 BT.
A pine, 12 ins. diam, bears N34°W, 22.1 ft. dist., mkd. 1/4 S10 BT.

Painted the scribed faces red and 6" red band on Bearing Trees. Attached Land Survey Monument and Bearing Tree signs.

Date of Fieldwork: 8/14/2014
Survey crew: Tom Hommel
Magnetic declination: 14° East assumed
Equipment used: Hand compass and loggers tape

U.S. Forest Service, Supervisors Office, 31374 Hwy. 2, Libby, MT 59923 (406) 293-6211



CERTIFICATION

I, _____, certify the information shown herein is true and correct.

Signature Ground Party/Chlor

Thomas M. Hommel THOMAS M.

I, _____, certify that this Corner Record correctly represents work performed by me or under my direction in compliance with the "Corner Recordation Act" (70-22-101, 40-0001CS.)

Signature of Surveyor & Seal

Date: 12/2/14 Reg. No. 108001

Employer: U. S. Forest Service

Office of Clerk and Recorder, County of Lincoln

Sec. 10

254905 BOOK: CCR CC&R'S PAGE: 12163 Pages:
STATE OF MONTANA LINCOLN COUNTY
RECORDED: 12/04/2014 12:03 KOI: CC&R'S
TAMMY D. LAUER CLERK AND RECORDER
FEE: \$0.00 BY: C. R. M., Deputy
FOR: FILED

Cross Index No. J 15 T. 37N. R. 27W. P.M., MT

Adopted November 7, 2012, Montana Board of Professional Engineers & Land Surveyors

● corner this sheet