

## INSTRUCTIONS

1. Original and/or sufficient record used to evaluate the corner position.
2. Description of evidence found, note discrepancies in the record, state method of establishing lost or obliterated corners.
3. Description of monument and accessories set to perpetuate the corner position.
4. Sketch or corner, show all pertinent data which can best be shown in a sketch example, corner marking, topography ties, position of accessories, etc.
5. Certification must be signed and sealed by Registered Land Surveyor in State of Montana.
6. Fill in Cross Index & Section Diagram at bottom of sheet.

## • CERTIFIED CORNER RECORDATION

Corner Sec. Cor. 27, 28, 33 & 34 T. 37 N R. 27 W P.M.M. Lincoln County

Record:

Set a sandstone 20x8x6" 15" in the ground marked with  
1 notch on S & 3 notches on E edges from which:

a fir 28" dia. bears N. 53° 15' E. 951ks

a fir 26" dia. bears S. 35° 30' E. 191ks

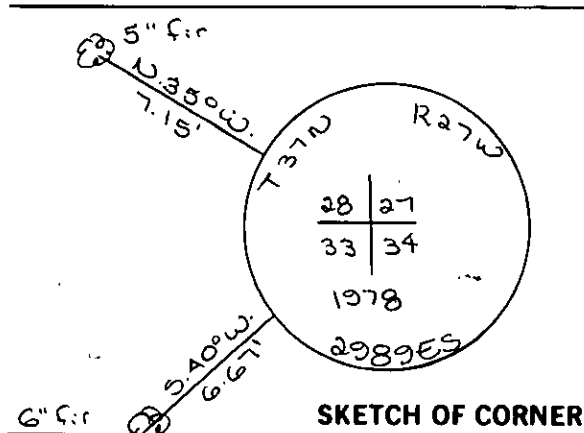
a fir 28" dia. bears S. 27° W. 571ks

a fir 14" dia. bears N. 52° 30' W. 291ks.

found stone & four old BTs

Set brass cap and buried stone alongside

See C. of S. 126 341 for adjacent corners



### CERTIFICATION

I, \_\_\_\_\_  
certify the information shown herein is true and correct.

Signature Ground Party Chief

I, D.K. Maquardt  
certify that this Corner Record correctly represents work performed  
by me or under by direction in compliance with the "Corner  
Recordation Act" (70-22-101, et seq., M.D.A.)

D.K. Maquardt  
Signature of Surveyor & Seal

Date: 7-6-81 Reg. No. 2989ES

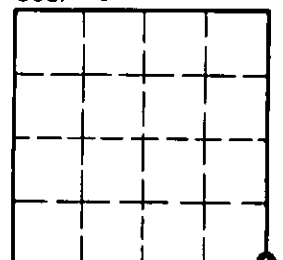
Employer: \_\_\_\_\_

Office of Clerk and Recorder, County of Lincoln. This "corner  
record" was filed for record on the 17th July day of 1981,  
was noted on the cross-index plat and is assigned page No. 1167, in  
book No. 1

Charles L. Vaughan, by Betty Lee,  
County Official deputy

Cross Index No. V 13 T. 37 N R. 27 W PMM

Sec. 28



• corner this sheet