

## INSTRUCTIONS

1. Original and/or subsequent record used to evaluate the corner position.
2. Description of evidence found, note discrepancies in the record, state method of establishing lost or obliterated corners.
3. Description of monument and accessories set to perpetuate the corner position.
4. Sketch or corner, show all pertinent data which can best be shown in a sketch example, corner marking, topography ties, position of accessories, etc.
5. Certification must be signed and sealed by Registered Land Surveyor in State of Montana.
6. Fill in Cross Index & Section Diagram at bottom of sheet.

## CERTIFIED CORNER RECORDATION

Corner 1/4 corner between Sec 33 & 34 T. 37N R. 27W P.M.M. Lincoln County

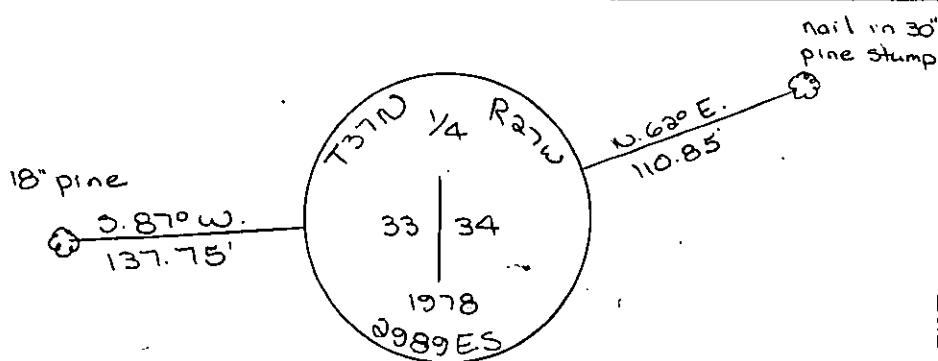
Record:

Set a sandstone 16x8x6" 11" in the ground for  
1/4 Sec. cor. marked 1/4 on west face

Found loose stone 1' from fence corner -  
accepted fence corner as best evidence

Set brass cap at fence corner and buried stone  
alongside

See C. of S. No. 541 for adjacent corners



SKETCH OF CORNER

### CERTIFICATION

I, \_\_\_\_\_  
certify the information shown herein is true and correct.

Signature Ground Party Chief

I, D.K. Marquardt  
certify that this Corner Record correctly represents work performed  
by me or under my direction in compliance with the "Corner  
Recordation Act" (70-22-101, et seq., M.D.A.)

D.K. Marquardt  
Signature of Surveyor & Seal

Date: 7-6-81 Reg. No. 2989ES

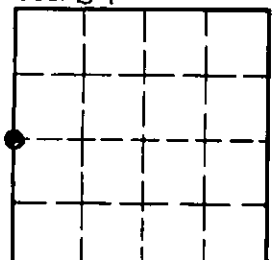
Employer: \_\_\_\_\_

Office of Clerk and Recorder, County of Lincoln. This "corner  
record" was filed for record on the 17th July day of 1981,  
was noted on the cross-index plat and is assigned page No. 1166, in  
book No. 1

Clarence L. Vaughan, Jr., Deputy Sec.  
County Official

Cross Index No. X-13 T. 37N R. 27W P.M.M.

Sec. 34



● - corner this sheet