

INSTRUCTIONS

1. Original and/or sufficient record used to evaluate the corner position.
2. Description of evidence found, note discrepancies in the record, state method of establishing lost or obliterated corners.
3. Description of monument and accessories set to perpetuate the corner position.
4. Sketch or corner, show all pertinent data which can best be shown in a sketch example, corner marking, topography lies, position of accessories, etc.
5. Certification must be signed and sealed by Registered Land Surveyor in State of Montana.
6. Fill in Cross Index & Section Diagram at bottom of sheet.

CERTIFIED CORNER RECORDATION

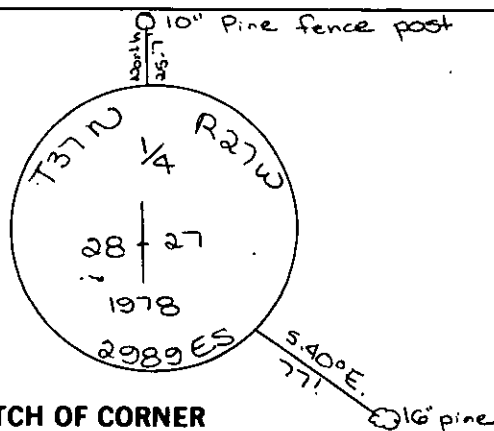
Corner $\frac{1}{4}$ corner between Sec. 27 & Sec. 28 T. 37 N R. 27 W P.M.M. Lincoln County

Record:

Set a sandstone $20 \times 10 \times 6$ " 15" in the ground marked $\frac{1}{4}$ on W. face and dug pits $18 \times 18 \times 12$ " N & S of stone $5\frac{1}{2}$ ft and raised a mound of earth $1\frac{1}{2}$ ' high $3\frac{1}{2}$ ' alongside.

Found stone marked $\frac{1}{4}$ solid in ground - set brass cap - buried stone alongside.

See C. of S. No. 541 for adjacent corners



SKETCH OF CORNER

CERTIFICATION

I, _____
certify the information shown herein is true and correct.

Signature Ground Party Chief

I, D. K. Maguardt
certify that this Corner Record correctly represents work performed by me or under by direction in compliance with the "Corner Recordation Act" (70-22-101, et seq., M.D.A.)

Signature of Surveyor & Seal

Date: 7-6-81 Reg. No. 2289ES

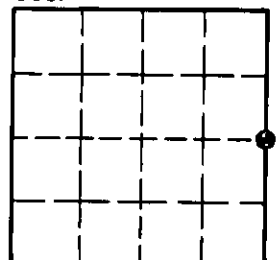
Employer: _____

Office of Clerk and Recorder, County of Lincoln. This "corner record" was filed for record on the 17th July day of 1981, was noted on the cross-index plat and is assigned page No. 1164, in book No. 1

William L. Vaughan, by Deputy
County Official

Cross Index No. T 13 T. 37N R. 27W P.M.M.

Sec. 28



• - corner this sheet