

## INSTRUCTIONS

1. Original and/or subsequent record used to evaluate the corner position.
2. Description of evidence found, note discrepancies in the record, state method of establishing lost or obliterated corners.
3. Description of monument and accessories set to perpetuate the corner position.
4. Sketch or corner, show all pertinent data which can best be shown in a sketch example, corner marking, topography ties, position of accessories, etc.
5. Certification must be signed and sealed by Registered Land Surveyor in State of Montana.
6. Fill in Cross Index & Section Diagram at bottom of sheet.

## • CERTIFIED CORNER RECORDATION

Corner SE cor. Sec 32 - SW cor Sec 33 T. 37N R. 27W P.M.M. Lincoln County

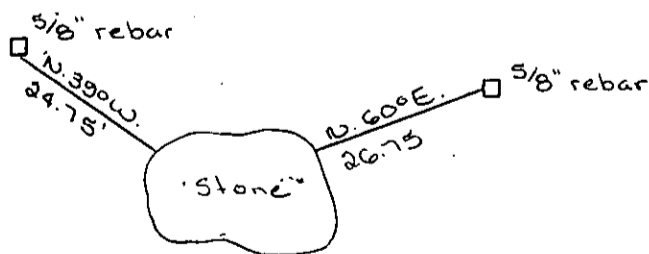
Record:

Set a sandstone 16x16x10 inches 11 inches in the ground marked SC with four notches on East face and three notches on West face.

Dug pits.

Found original stone with notches set in mound of rocks - set metal fence post alongside stone

See C. of S. No. 541 for adjacent corners



SKETCH OF CORNER

### CERTIFICATION

I, \_\_\_\_\_  
certify the information shown herein is true and correct.

Signature Ground Party Chief

I, D.K. Marquardt  
certify that this Corner Record correctly represents work performed by me or under my direction in compliance with the "Corner Recordation Act" (70-22-101, et seq., M.D.A.)

D.K. Marquardt  
Signature of Surveyor & Seal

Date: 7-6-81 Reg. No. 2289ES

Employer: \_\_\_\_\_

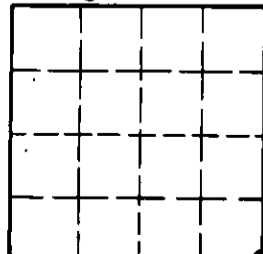
Office of Clerk and Recorder, County of Lincoln. This "corner record" was filed for record on the 17th July day of 1981, was noted on the cross-index plat and is assigned page No. 1158 in book No. 1

Edward L. Taughn, Jr.  
County Official

Betty Bell  
Deputy

Cross Index No. 2-9 T. 37N R. 27W PMM

Sec. 32



• - corner this sheet