

INSTRUCTIONS

1. Original and/or sub record used to evaluate the corner position.
2. Description of evidence found, note discrepancies in the record, state method of establishing lost or obliterated corners.
3. Description of monument and accessories set to perpetuate the corner position.
4. Sketch or corner, show all pertinent data which can best be shown in a sketch example, corner marking, topography ties, position of accessories, etc.
5. Certification must be signed and sealed by Registered Land Surveyor in State of Montana.
6. Fill in Cross Index & Section Diagram at bottom of sheet.

CERTIFIED CORNER RECORDATION

Corner 1/4 cor. between Sec. 1 & 12 T. 37N R. 27W P.M.M. Lincoln County

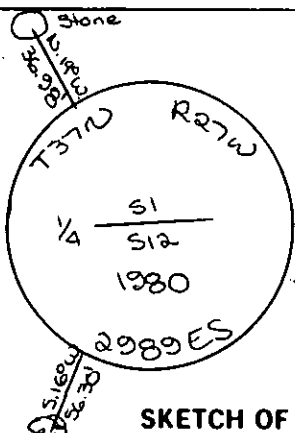
Record:

Set a limestone 18x8x8 ins. 12 ins in the ground marked 1/4 on N face.

Dug pits for RMs.

Found stone - set alum. cap buried stone alongside.

See C. of S. No 819 for adjacent corners.



SKETCH OF CORNER

CERTIFICATION

I, _____
certify the information shown herein is true and correct.

Signature Ground Party Chief

I, D.K. Marquardt

certify that this Corner Record correctly represents work performed by me or under my direction in compliance with the "Corner Recordation Act" (70-22-101, et seq., M.D.A.)

D.K. Marquardt
Signature of Surveyor & Seal

Date: 7-7-81 Reg. No. 2989ES

Employer: _____

Office of Clerk and Recorder, County of Lincoln This "corner

record" was filed for record on the 17th July day of 1981

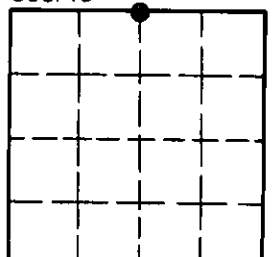
was noted on the cross-index plat and is assigned page No. 1122 in

book No. 1

Eleanor L. Vaughn, by Betty Sue,
County Official Deputy

Cross Index No. E-23 T. 37N R. 27W P.M.M.

Sec. 12



• corner this sheet