

INSTRUCTIONS

1. Original and/or subsequent record used to evaluate the corner position.
2. Description of evidence found, note discrepancies in the record, state method of establishing lost or obliterated corners.
3. Description of monument and accessories set to perpetuate the corner position.
4. Sketch or corner, show all pertinent data which can best be shown in a sketch example, corner marking, topography ties, position of accessories, etc.
5. Certification must be signed and sealed by Registered Land Surveyor in State of Montana.
6. Fill in Cross Index & Section Diagram at bottom of sheet.

• CERTIFIED CORNER RECORDATION

Corner 1/4 corner between Sec. 2 & 11 T. 37N R. 27W P.M.M. Lincoln County

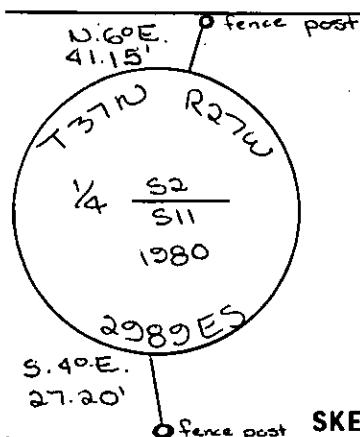
Record:

Set a sandstone 20x8x6 ins. 15 ins. in the ground marked 1/4 on N. face

Dug pits for RMs.

Found stone as described.

Set alum. cap - buried old stone N of cap



SKETCH OF CORNER

CERTIFICATION

I, \_\_\_\_\_  
certify the information shown herein is true and correct.

Signature Ground Party Chief

1. D.K. Macquardt

certify that this Corner Record correctly represents work performed by me or under my direction in compliance with the "Corner Recordation Act" (70-22-101, et seq., M.D.A.)

D.K. Macquardt  
Signature of Surveyor & Seal

Date: 7-7-81 Reg. No. 2989ES

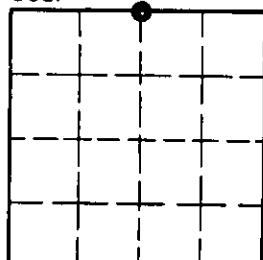
Employer: \_\_\_\_\_

Office of Clerk and Recorder, County of Lincoln. This "corner record" was filed for record on the 17th day of July 1981 was noted on the cross-index plat and is assigned page No. 1121 in book No. 1

Glenn L. Vaughn  
County Official

Betty Lee  
Deputy

Sec. 11



Cross Index No. E-19 T. 37N R. 27W P.M.M.

• - corner this sheet