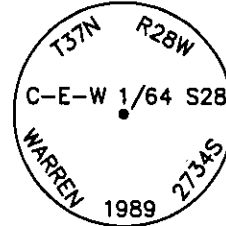


# CERTIFIED CORNER RECORDATION

Corner CEW 1/64 S28 T. 37 N. R. 28 W. P.M.M. LINCOLN County

I. Record: 1989 Certified Corner Recordation by H. Gene Warren, MT Reg. No. 2734S; Set a standard 3 1/4 inch Forest Service alum. cap on a 5/8 inch rod, 28 inches in the ground, from which:

A 5 inch lodgepole bears, N56°E, 4.40 feet, scribed C E W 1/64 S28 BT.  
A 6 inch fir, bears S04°E, 7.83 feet, scribed C E W 1/64 S28 BT.  
Set a 6 foot steel post 3 feet north of corner.



II. Found a 5/8" diam. aluminum rod with a 3 1/4" diam. aluminum cap, 8 ins. above ground with 3 1/4 in. diam. aluminum cap marked as shown above, from which:

A lodgepole pine snag, 5 ins. diam, bears N56°E, 4.4 ft. dist., mkd. C E W 1/64 S28 BT.  
A fir, 8 ins. diam, bears S4°E, 7.83 ft. dist., mkd. C E W 1/64 S28 BT.  
A 6 foot steel post 3 feet north of corner.

III. Established 1 new bearing tree:

A larch, 7 ins. diam., bears N40°E, 19.4 ft. dist., marked "X" BT.

Attached Bearing Tree and Land Survey Monument signs to the bearing trees. Painted red the scribed face and a red band around the bearing tree.

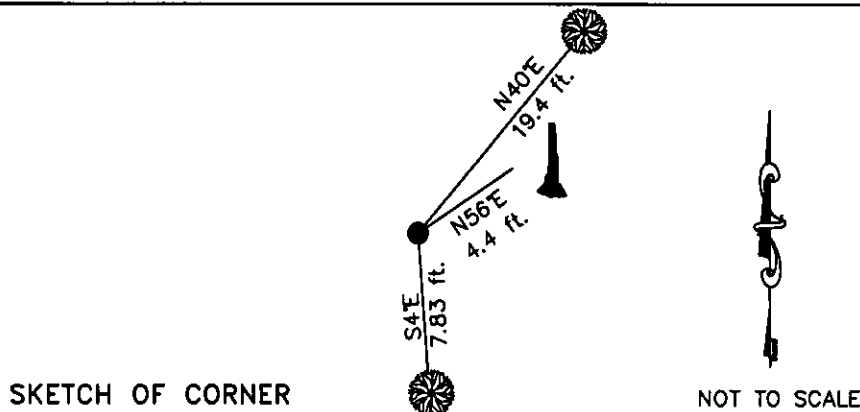
Date of Fieldwork: 10/16/2006

Survey crew: Tom Hommel

Magnetic declination: 20° East assumed

Equipment used: Hand compass and loggers tape

U.S. Forest Service, Supervisors Office, 1101 Hwy. 2 West, Libby, MT 59923 (406) 293-6211



CERTIFICATION

I, Thomas M. Hommel 10800LS  
certify the information shown herein is true and correct.

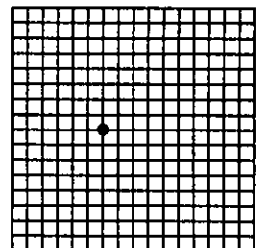
Thomas M. Hommel  
Signature Ground Party Chief

I, Steven A. Boyer  
certify that this Corner Record correctly represents work performed by me or under my direction in compliance with the "Corner Recordation Act" (20-22-101, et seq., M.C.A.)

Steven A. Boyer  
Signature of Surveyor & Seal

Date: 10/31/2006 Reg. No. 976056750LS  
Employer: U. S. Forest Service

Sec. 28



• corner this sheet

Office of Clerk and Recorder, County of Lincoln This "corner

record" was filed for recd. 199652 BOOK: CCR CC&R'S PAGE: 10986 Pages: 1

was noted on the cross-STATE OF MONTANA LINCOLN COUNTY

book No. RECORDED: 12/13/2006 1:06 KOI: CC&R'S

CORAL M. CUMMINGS CLERK AND RECORDER

FEE: \$0.00

BY: Francis S. Smith

TO: US FOREST SERVICE

Cross Index No. T-10.5 T. 37N. R. 28W. P.M., MT

Adopted July 1, 1981, Montana Board of Professional Engineers & Land Surveyors