

CERTIFIED LAND CORNER RECORDATION

HES NO. 273 IN UNSURVEYED SECTION 36 TWP. 36 N., R 32 W., P.M.M.

DESCRIPTION OF CORNER EVIDENCE FOUND, AND ORIGINAL RECORD (IF KNOWN)

Original stone corner No. 8 for HES No. 273 found as reported

Corner No. 7 relocated and reset as reported on DIAGRAM ON OTHER SIDE

DESCRIPTION OF MONUMENT AND ACCESSORIES ESTABLISHED
TO PERPETUATE THE ORIGINAL LOCATION OF THIS CORNER:

Date of work: April, 1980

POINTS ON LINE AT STREAM CROSSING FOUND AS SHOWN
SEE REVERSE SIDE DIAGRAM

SKETCH, WITH COURSE AND DISTANCE TO ADJACENT CORNERS IF DETERMINED IN THIS SURVEY.
(MAY SKETCH OR PASTE REPRODUCTION ON REVERSE SIDE.)

SEE DIAGRAM ON REVERSE SIDE

Surveyor's Seal

I, Jack H. Ninneman 4661 S
certify that the information shown herein is true and correct.

Jack H. Ninneman
Signature of Ground Party Chief

J.H. Ninneman
I, certify that I have carefully performed or reviewed the work done on the diagrammed corner as reported on this recordation form and approve the same.

Jack H. Ninneman
Signature of Surveyor

DIAGRAM OF CORNER:

N-SEE REVERSE SIDE

= Corner recorded on the sheet

4661 S.
Registration Number

Office of Clerk and Recorder, County of Lincoln

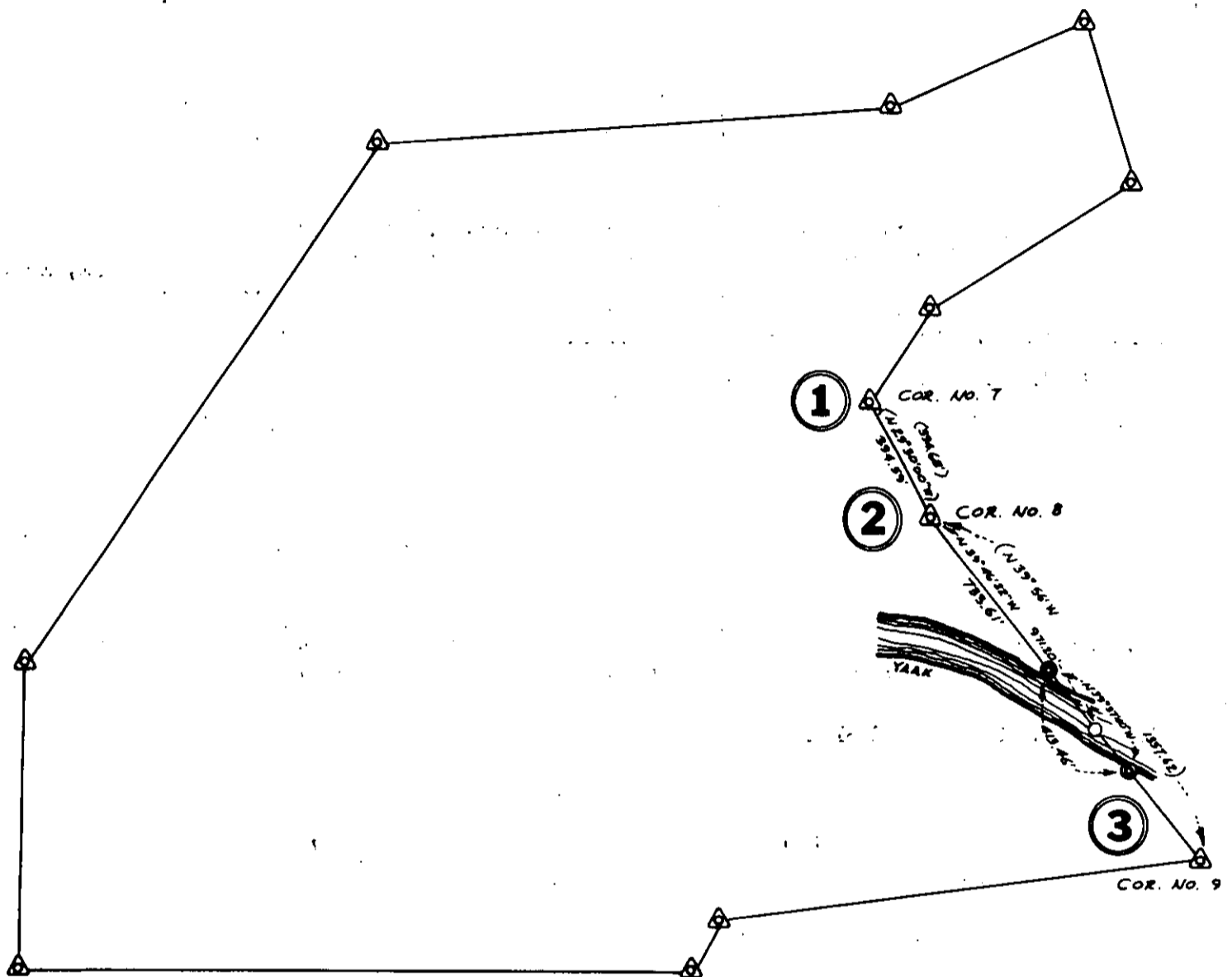
This "corner record" was filed for record on the 31ST day of July 1980, was noted on the cross-index plat and is

assigned page No. 886, in book No.

Eleanor L. Vaughn County Official
Sherry L. Hawkes Deputy

H.E.S. No. 273
IN UNSURVEYED SECTION 36
TWP. 36 N., R 32 W., M.P.M.

85



- (1) Found 2 Original B.T.s
 No Evidence of 6"x6" Post
 Reset Corner From B.T.s with
 Capped 5/8"x 24" Steel Rod
 Stamped J.H.N. 4661 S.
- (2) Found Original Stone
 2 Original B.T.s
- (3) No Evidence of 6"x6" Post
 Original B.T.s Destroyed
 Could not locate this Corner

HARDING