

INSTRUCTIONS

1. Original and/or subsequent record used to evaluate the corner position.
2. Description of evidence found, note discrepancies in the record, state method of establishing lost or obliterated corners.
3. Description of monument and accessories set to perpetuate the corner position.
4. Sketch of corner, show all pertinent data which can best be shown in a sketch example, corner marking, topography ties, position of accessories, etc.
5. Certification must be signed and sealed by Land Surveyor registered in the State of Montana.
6. Fill in Cross Index & Section Diagram at bottom of sheet.

CERTIFIED CORNER RECORDATION

Corner 4 of HES 432 T. 36 N. R. 32 W. P.M.M. Lincoln County

- I. 1915. original HES record by Fred E. Thieme: "Set for Cor. No. 4, a small stone marked with a cross (x) under a granite stone 24x12x8 ins., 14 ins. in the ground, marked 4 HES 432 on SW. face and a cross (x) on top for the exact corner point, from which

A cross (x) on a larch tree, 28 ins. dia., bears $N47^{\circ}02'E$, 59 lks. dist.

A cross (x) on a larch tree, 7 ins. dia., bears $S38^{\circ}05'E$, 95 lks. dist.; each blazed and scribed 4 H.E.S. 432 BT.

Raise a mound of stone, 4 ft. base, 2 ft. high, SW. of corner."

- II. Found a firmly set granite stone, 5x9 ins., 7 ins. out of ground, marked 4 HES 432 on W face (red: SW face) and X on top, from which

Root crown, 20 ins. dia., bears $N47^{\circ}E$, 39.2 ft. (59.4 ft.), no visible scribe.

Rotten stump, 18 ins. dia., bears $S38^{\circ}E$, 63.3 ft. (95.9 ft.), no visible scribe.

A mound of earth and stone, 3 ft. base by 16 ins. high, bears SW, 4 ft. dist.

- III. Established two new bearing trees:

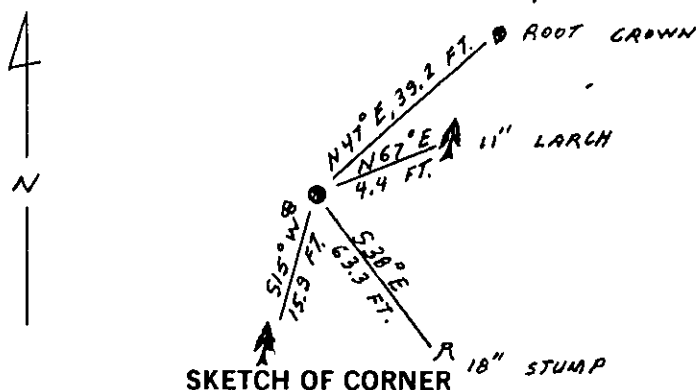
A larch, 11 ins. dia., bears $N67^{\circ}E$, 4.4 ft. dist., scribed 4 HES 432.

A larch, 9 ins. dia., bears $S15^{\circ}W$, 15.9 ft. dist., scribed X BT.

Painted red bands around the bearing trees and attached Land Survey Monument and Bearing Tree signs where needed.

Set a 6 ft. galvanized steel guard post with Land Survey Marker and Property Boundary decals, South, 3 ft.

Magnetic Declination: $20^{\circ}30'$ East



SKETCH OF CORNER

CERTIFICATION

I, Gary C. Crismon

certify the information shown herein is true and correct.

Gary C. Crismon
Signature Ground Party Chief

I, Alvah F. Hughes

certify that this Corner Record correctly represents work performed by me or under my direction in compliance with the Corner Recordation Act" (70-22-101, et seq., M.C.A.)

Alvah F. Hughes
Signature of Surveyor & Seal

12/13/89

Date: 12/13/89 Reg. No. 7322-SJ

Employer: U.S. FOREST SERVICE

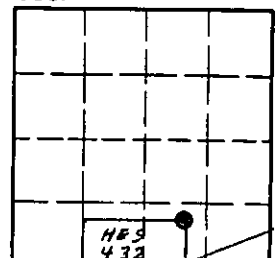
Office of Clerk and Recorder, County of Lincoln. This "corner record" was filed for record on Dec 19, 1989

was noted on the cross-index plat and is assigned page No. 4156, in book No. _____

Paul B. Sigel by Bill Buckoff
County Official

Cross Index No. 4 HES 432 T. 36 N R. 32 W P.M.M.

Sec. 34



• - corner this sheet