

## INSTRUCTIONS

1. Original and/or subsequent record used to evaluate the corner position.
2. Description of evidence found, note discrepancies in the record, state method of establishing lost or obliterated corners.
3. Description of monument and accessories set to perpetuate the corner position.
4. Sketch of corner, show all pertinent data which can best be shown in a sketch example, corner marking, topography this, position of accessories, etc.
5. Certification must be signed and sealed by Registered Land Surveyor in State of Montana.
6. Fill in Cross Index & Section Diagram at bottom of sheet.

## CERTIFIED CORNER RECORDATION

Corner Cor. #2 HES 273 & Cor. #6 HES 1179 T. 35,36N R. 32W P.M.M. Lincoln County

Record: Cor. #2 HES 273: Set a quartzite stone 30 X 14 X 8 inches, 20 inches in the ground for Cor. 2, marked 2 H.E.S. 273 on SE face and a cross (X) on top for exact corner point from which  
A cross (X) on a Red Fir 15 inches diameter bears S.3°30'E. 64 links distance.  
A cross (X) on a Larch 12 inches diameter bears N.46°38'E. 119 links distance, each blazed and scribed 2 H.E.S. 273 BT. Raise a mound of earth and stone 4 foot base, 2 feet high SE of corner.

Cor. #6 HES 1179: A quartzite stone 10 X 14 X 8 inches above ground, I adopt this cor. for Cor. No. 6 of this survey, and mark it 6 H.E.S. 1179 on the N.W. face. The cross (X) on stone is the exact Cor. point, from which

A cross (X) on a Douglas Fir tree 7 inches diameter bears S.66°40'W. 55 links distance (new BT)

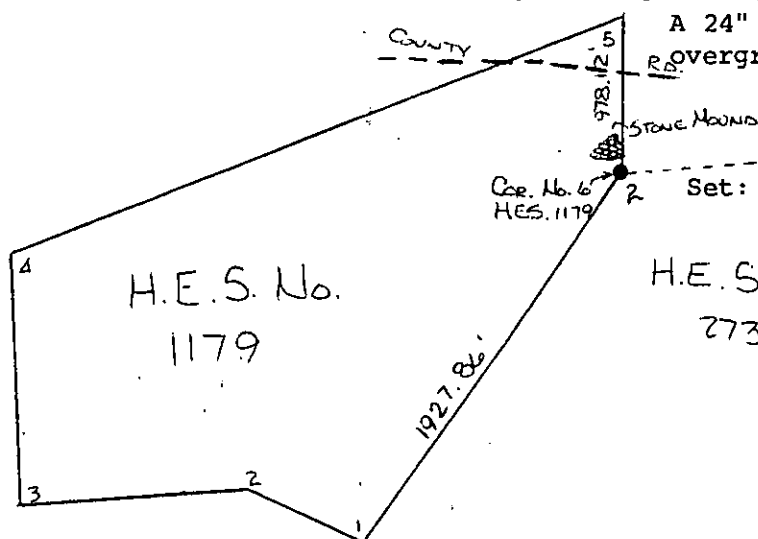
A cross (X) on a Douglas Fir tree 8 inches diameter bears N.55°30'W. 63 links distance (new BT), each blazed and scribed 6 H.E.S. 1179 BT.

Raise a mound of stone 4 foot base, 2 feet high, N.W. of cor.

Found: A quartzite stone 10" X 14" X 8" above ground with an X on top scribed 6 HES 1179 on NW face and 2 HES 273 on SE face from which,

A 20" Fir bears N.55°30'W. 41.6 feet scribing overgrown.

A 24" Larch bears N.48°E 79.3 feet scribing overgrown.



Set: Posted bearing trees  
Painted monument and accessories with bright red paint.

H.E.S. No. 273

## CERTIFICATION

Jack H. Ninneman

I, Jack H. Ninneman certify the information shown herein is true and correct.

Jack H. Ninneman  
Signature Ground Party Chief

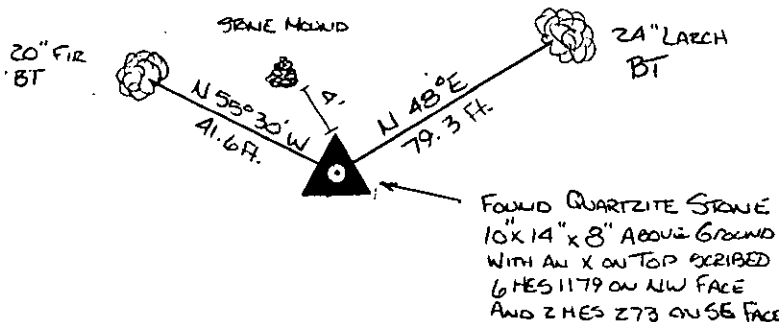
Jack H. Ninneman

I, Jack H. Ninneman certify that this Corner Record correctly represents a work performed by me or under my direction in compliance with the "Corner Recordation Act" (70-22-101, et seq., M.C.A.)

Jack H. Ninneman  
Signature of Surveyor & Seal

Date: Dec. 82 Reg. No. 4661S

Employer: Ninneman Engineering Inc.



SKETCH OF CORNER

Office of Clerk and Recorder, County of LINCOLN. This "corner record" was filed for record on the DEC. 30 day of 1982. was noted on the cross-index plat and is assigned page No. 2128, in book No. \_\_\_\_\_

Eleanor L. Vaughn by Betty L. Conces  
County Official deputy

Sec.

H.E.S. 1179
UNSURVEYED
SECTION