

INSTRUCTIONS

1. Original and/or subsequent record used to evaluate the corner position.
2. Description of evidence found, note discrepancies in the record, state method of establishing lost or obliterated corners.
3. Description of monument and accessories set to perpetuate the corner position.
4. Sketch or corner, show all pertinent data which can best be shown in a sketch example, corner marking, topography ties, position of accessories, etc.
5. Certification must be signed and sealed by Registered Land Surveyor in State of Montana.
6. Fill in Cross Index & Section Diagram at bottom of sheet.

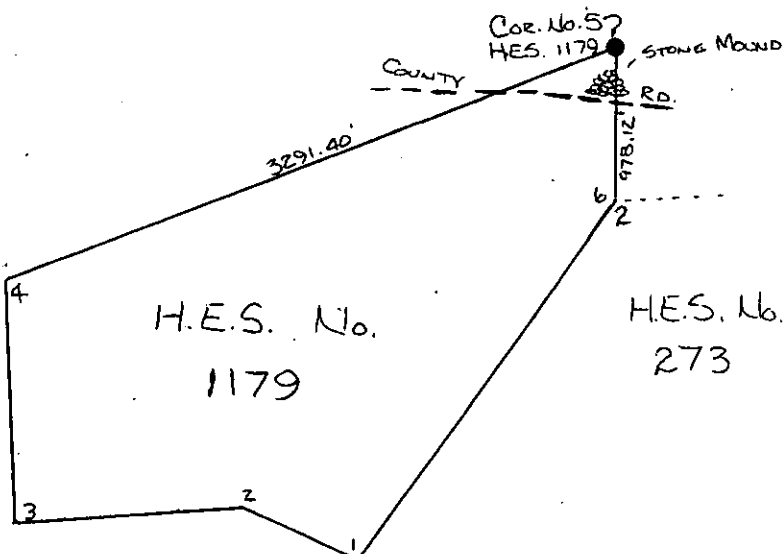
CERTIFIED CORNER RECORDATION

Corner Cor. No. 5 HES 1179 T. 35, 36N R. 32W P.M.M. Lincoln County

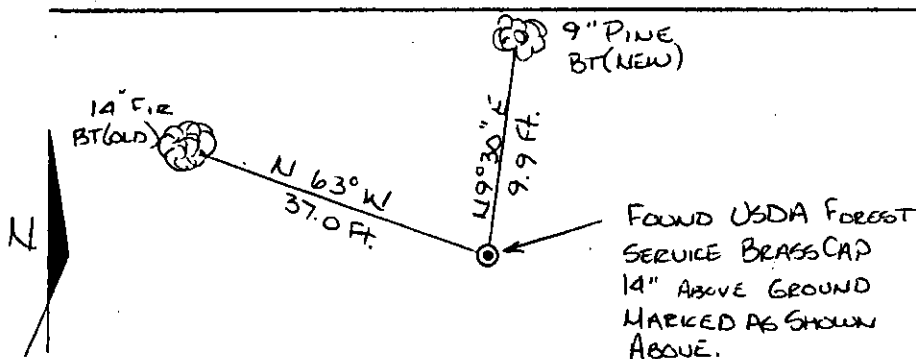
Record: Cor. #5 HES 1179- Place a small stone marked with a cross (x) under an iron post 36 ins. long, 2 ins. dia., 24ins. in the ground, with a brass cap marked 1922 5 H.E.S. 1179, and a point on top for the exact cor. point, from which
Across(x) on a tamarack tree 12 ins. dia. bears S.31°30'E. 71 lks. dist.
A cross (x) on a douglas fir tree 6 ins. dia. bears N.63°00'W. 55 lks. dist., each blazed and scribed 5H.E.S. 1179 B.T.
Raise a mound of stone 4 ft. base, 2 ft. high, s.W. of cor.

Found: A U.S.D.A. Forest Service Brass cap 2½", 14" above the ground marked as shown below from which, A 14" Fir bears N63°W 37.0 feet scribing overgrown. Posted.

Set: A 9" Pine bears N9°30'W 9.9 feet scribed 5HES1179 BT and posted.
Painted monument and accessories with bright red paint.



Found USDA Forest Service Brass Cap marked as shown.



SKETCH OF CORNER

CERTIFICATION

1. Jack H. Ninneman
certify the information shown herein is true and correct.

Jack H. Ninneman
Signature Ground Party Chief

1. Jack H. Ninneman
certify that this Corner Record correctly represents work performed by me or under by direction in compliance with the "Corner Recordation Act" (70-22-101, et seq., M.D.A.)

Jack H. Ninneman
Signature of Surveyor & Seal

Date: Dec. 82 Reg. No. 4661 S.

Employer: Ninneman Engineering Inc.

Office of Clerk and Recorder, County of LINCOLN. This "corner record" was filed for record on the DEC. 30 day of 1982 was noted on the cross-index plat and is assigned page No. 2127, in book No. 2127 by Eleanor L. Vaughn County Official Betty L. Conces deputy

| Sec. | |
|-------------|--|
| H.E.S. 1179 | |
| UNSURVEYED | |
| SECTION | |

Cross Index No. 35 N T. 36 N R. 32 W P.M.M.

• corner this sheet