

INSTRUCTIONS

1. Original and/or subsequent record used to evaluate the corner position.
2. Description of evidence found, note discrepancies in the record, state method of establishing lost or obliterated corners.
3. Description of monument and accessories set to perpetuate the corner position.
4. Sketch of corner, show all pertinent data which can best be shown in a sketch example, corner marking, topography ties, position of accessories, etc.
5. Certification must be signed and sealed by Registered Land Surveyor in State of Montana.
6. Fill in Cross Index & Section Diagram at bottom of sheet.

CERTIFIED CORNER RECORDATION

Cor. #3 HES 1179
 Corner Cor. #10 HES 274 T. 35, 36 N R. 32W P.M.M. Lincoln County
 Cor. #1 HES 431
 Cor. #6 HES 495

Record: Cor. # 10 HES 274 Set for corner No. 10 a quartzite stone 26 X 13 X 8 inches in the ground, marked 10 HES 274 on SW face and a cross (X) on top for exact corner point from which

A cross (X) on a Red Fir 30 inches diameter bears S.75°21'E 65 links distance.

A cross (X) on a Red Fir 30 inches diameter bears S.19°17'E 106 links distance each blazed and scribed 10 H.E.S. 274B.T. Raise a mound of stone 4 foot base, 2 feet high SW of corner.

Cor. # 1 HES 431 A quartzite stone 10 X 13 X 8 inches above ground. Marked and witnessed as described by the surveyor general. I mark this stone for Cor. No. 1, HES 431 on NW face from the cross (X) on top.

A cross (X) on a Red Fir tree, 30 inches diameter, bears S.73°50'E., 65 links distance.

A cross (X) on a Red Fir tree, 30 inches diameter, bears S.19°29'W., 103 links distance, each blazed and scribed 1 H.E.S. 431 B.T.

Raise a mound of stone, 4 foot base, 2 feet high N.W. of corner.

Cor. #3 HES 1179 A quartzite stone 10 X 13 X 8 inches above ground, I adopt this corner for corner No. 3 of this survey, and mark it 3 H.E.S. 1179 on the N.E. face.

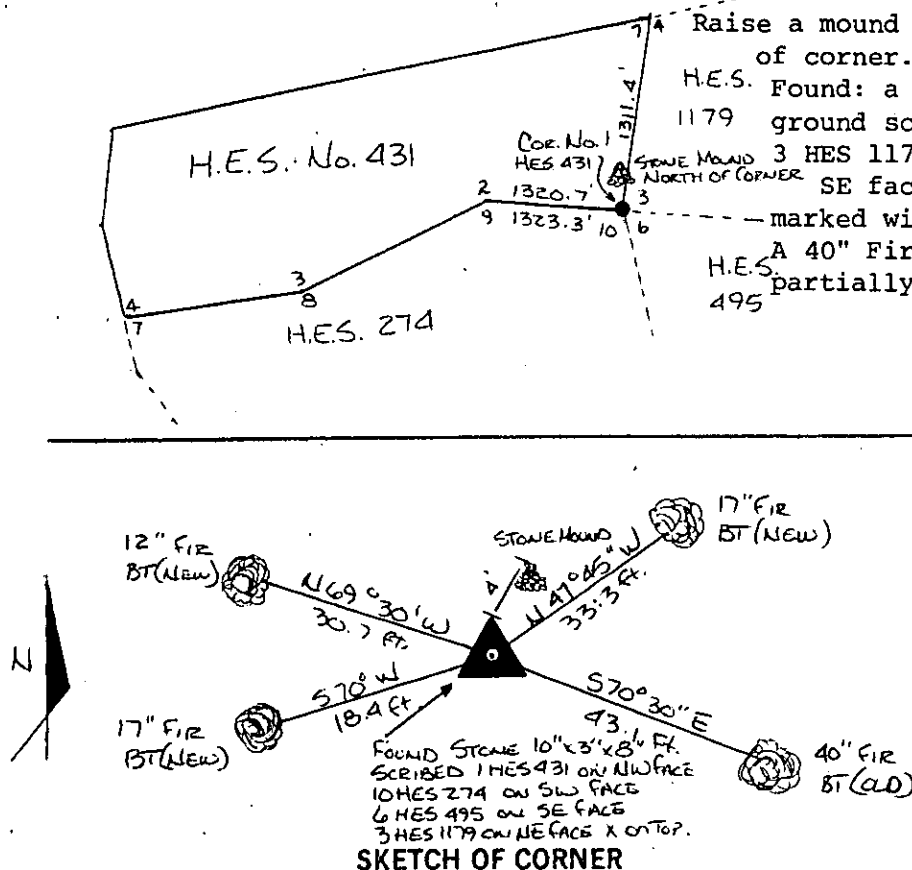
A cross (X) on stone is the exact corner point, from which The Cross (X) on a Lodgepole pine tree 6 inches diameter bears N.29°25'E. 66 links distance. (new B.T.)

A cross (X) on a Lodgepole pine tree 6 inches diameter bears N.62°10'E. 121 links distance (new B.T.), each blazed and scribed 3 H.E.S. 1179 B.T.

Raise a mound of earth 4 foot base 2feet high N.E. of corner.

H.E.S. Found: a quartzite stone 10" X 13" X 8" above 1179 ground scribed 10 HES 274 on the Southwest face, 3 HES 1179 on the Northeast face, 6 HES 495 on SE face and 1 HES 431 on NW face. Stone marked with an X on top from which, A 40" Fir bears S.70°30"E 43.1 feet scribing partially legible. Original BT.

(See reverse side)



SKETCH OF CORNER

CERTIFICATION

I, Jack H. Ninneman certify the information shown herein is true and correct.

Jack H. Ninneman
 Signature Ground Party Chief

I, Jack H. Ninneman certify that this Corner Record correctly represents work performed by me or under my direction in compliance with the "Corner Recordation Act" (70-22-101, et seq., M.D.A.)

Jack H. Ninneman
 Signature of Surveyor & Seal

Date: Dec. 82 Reg. No. 4661S

Employer: Ninneman Engineering Inc.

Office of Clerk and Recorder, County of LINCOLN. This "corner record" was filed for record on the DEC. 30 day of 1982 was noted on the cross-index plat and is assigned page No. 2125, in book No. _____

Eleanor L. Vaughn by Betty L. Conces
 County Official deputy

Sec.			
	HES 431		
	UNSURVEYED		
	SECTION		

Cross Index No. _____ T. 35 N R. 32 W P.M.M.

• corner this sheet

Set: Posted original bearing tree.

A 17" Fir bears N.47°45"E 33.3 feet scribed 3 H.E.S. 1179
BT and posted.

A 12" Fir bears N.69°30'W 30.7 feet scribed 1 HES 431 BT
and posted.

A 17" Fir bears S.70°W. 18.4 feet scribed 10 HES 274 BT and
posted.

Painted monument and accessories with bright red paint.

C

