

Corner 4 HES 1179 T. 36 N. R. 32 W. P.M.M. LINCOLN County

I. 1915 U. S. Forest Service survey of HES 431 by Fred E. Thieme: Set a slate stone, 27x16x6 ins., 17 ins. in the ground for cor. 7 HES 431. No bearings available therefore dig pits, 24x24x12 ins. crosswise on this and succeeding course, 7 ft. dist., and raise a mound of earth, 4 ft. base, 2 ft. high, SW of corner.

1922 U. S. Forest Service survey of HES 1179 by J. F. Pfau: Intersect Cor. No. 7 HES No. 431 which is a slate stone, 10x16x6 ins. above ground marked and witnessed as described by the Surveyor General. I adopt this cor. for Cor. No. 4 of this survey, and mark it 4 HES 1179 on the S.E. face. The cross X on the stone is the exact cor. point, from which:

A cross (X) on a lodgepole pine tree, 5 ins. dia., bears S52°00'E, 60 lks. dist. (New BT.)

A cross (X) on a lodgepole pine tree, 5 ins. dia., bears S13°00'E, 36 lks. dist. (New BT.), each blazed and scribed 4 HES 1179 BT.

Raise a mound of earth 4 ft. base, 2 ft. high, S.E. of cor.

1982 Certified Corner Recordation by Jack H. Ninneman, MT Reg. No. 4661S: Found a stone, 27x10x6 ins., 10 ins. above ground with an x on top. Scribed 4 HES 1179 on SE face and 7 HES 431 on SW face from which,

An 8 in. Larch, bears S87 1/2°W, 54 lks. dist. Posted.

An 8 in. Pine, bears S38°W, 25 lks. dist. Posted.

Changed bearing on BT signs accordingly. Painted monument and accessories with bright red paint.

1986 Certified Corner Recordation by Thomas C. Hill, MT Reg. No. 5612S: Found the HES stone firmly set, measuring 15x5 and protruding 10 ins. above ground, marked: 7 HES 431 on NW side (record SW), HE 1179 on SW side (record: south), and possible damage to top of stone no X visible, from which the following references:

A pine snag, 8 ins. diam., bears S38°W, 24.1 lks. dist., mkd. X BT.

A larch, 9 ins. diam., bears N88°W, 54.3 lks. dist., mkd. with a healed face. (Ninneman record bearing S 87 1/2°W).

Established the following references:

A larch, 15 ins. diam., bears S48°W, 44 lks. dist., mkd. HES 431 COR 7 BT.

Painted blaze red and posted bearing tree sign.

II. Found: No original monument found. Believed to have been destroyed during construction of drainage ditch. Found the following bearing trees:

A larch, 18 ins. diam., mkd. with a healed face.

A larch, 9 ins. diam., mkd. with a healed face.

III. Set by dist.-dist. intersection from the found bearing trees, a 2 1/2 in. diam., 30 ins. long aluminum pipe, 24 ins. in the ground, with a 3 1/4 in. diam. aluminum cap marked as shown below, from which:

A larch, 18 ins. diam., bears S48°W, 29.04 ft. dist. mkd. with a healed face.

A larch, 9 ins. diam., bears N88°W, 35.8 ft. dist., mkd. with a healed face.

Painted the scribed faces red and 6 in. wide red bands around the bearing trees. Attached Land Survey Monument and Bearing Tree signs. Set 6 ft. steel posts 3 ft. S70°W & N80°E, with "Land Survey Monument" and Property Boundary" decals attached.

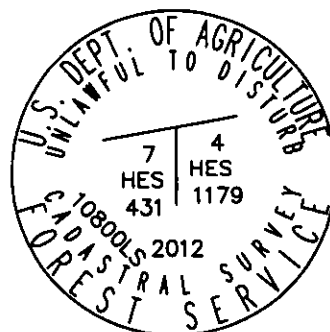
Date of Fieldwork: 8/23/2012

Survey crew: Tom Hommel, Alex Bluhm

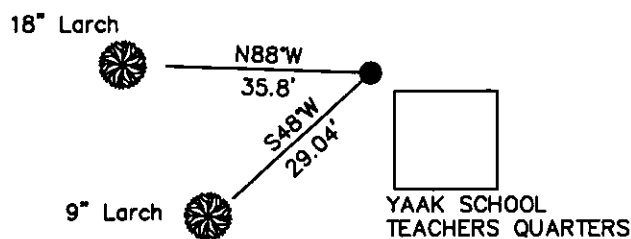
Magnetic declination: 20° East assumed

Equipment used: Hand compass and loggers tape

LAT 48°50'18.9"N  
LONG 115°41'50"W  
NAD 83  
REC. GRADE GPS



U.S. Forest Service, Supervisors Office, 31374 Hwy. 2, Libby, MT 59923 (406) 293-6211



NOT TO SCALE

#### CERTIFICATION

I, Thomas M. Hommel, certify the information shown herein is true and correct.

Signature Ground Party Chief

Thomas M. Hommel, 10800LS

I, Thomas M. Hommel, certify that this Corner Record correctly represents the work performed by me or under my direction in compliance with the "Corner Recordation Act" (70-22-101 et seq., M.C.A.)

Signature of Surveyor & Seal

Date: 11/26/12 Reg. No. 10800LS

Employer: U. S. Forest Service

Office of Clerk and Recorder, County of Lincoln

242096 BOOK: CCR CC&R'S PAGE: 11998 Pages: 1  
STATE OF MONTANA LINCOLN COUNTY  
RECORDED: 11/27/2012 2:50 KOI: CC&R'S  
TAMMY D. LAUER CLERK AND RECORDER  
FEE: \$0.00 BY: Thomas M. Hommel  
FOR: US FOREST SERVICE 31374 HWY 2, LIBBY, MONTANA 59923

Cross Index No. 4 HES 1179 T. 36N. R. 32W. P.M., MT

Adopted July 1, 1981, Montana Board of Professional Engineers & Land Surveyors

●corner this sheet