

CERTIFIED CORNER RECORDATION

Corner 4 H.E.S. 502 Sec. 3 T. 36N R. 31W P.M., MT Lincoln County

- I. 1915 U.S. Forest Service original record by Fred E. Thieme: Set a small stone, marked with a cross (x), under a quartzite stone, 24x11x7 ins., 14 ins. in the ground, marked "4 H.E.S. 502" on NE. face, and a cross (x) on top for the exact corner point.

from which:

A cross (x) on a lodgepole pine, 10 ins. diam., bears N12° 50'E, 18 lks. dist.
A cross (x) on a lodgepole pine, 8 ins. diam., bears N59°W, 20 lks. dist.
Each blazed and scribed "4 H.E.S. 502 BT"

Raised a mound of earth, 4 ft. base, 2 ft. high, NE. of corner.

- II. Found stone, firmly set, 11x7 ins., 5 ins. above ground, mkd. "4 H.E.S. 502" on NE. face, with a cross (x) on top.

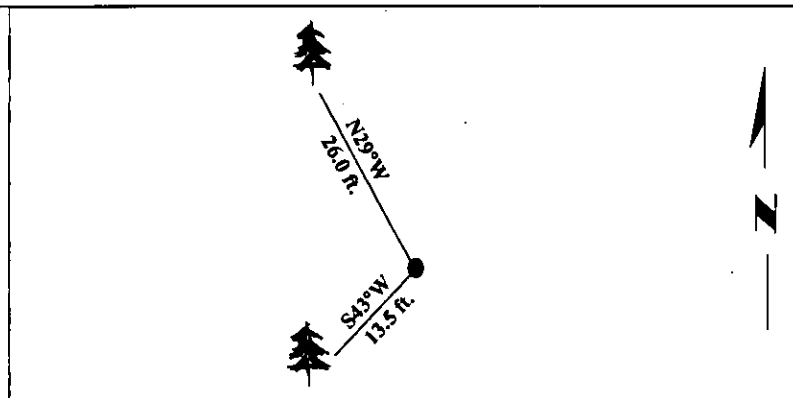
No evidence of original bearing trees found.

- III. Established 2 new bearing trees:

A larch, 14 ins. diam., bears S43°W, 13.5 ft. dist., mkd. "4 HES 502 BT".
A larch, 17 ins. diam., bears N29°W, 26.0 ft. dist., mkd. "4 HES 502 BT".

Painted bearing trees and attached Land Survey Monument and Bearing Tree signs.

Magnetic Declination: 20° East.

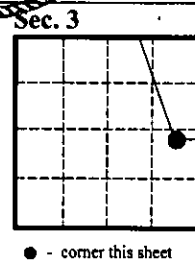


SKETCH OF CORNER

CERTIFICATION	
I. <u>Mark A. Federman</u>	certify the information shown herein is true and correct.
<i>Mark A. Federman</i>	
II. <u>Alvah F. Hughes</u>	certify that this Corner Record correctly represents work performed by me or under my direction in compliance with the "Corner Recordation Act" (70-22-101, et seq., M.C.A.)
<i>Alvah F. Hughes</i>	
Date: <u>1/26/96</u>	Signature of Surveyor & Seal
Reg. No.: <u>7322LS</u>	
Employer: <u>U.S. FOREST SERVICE</u>	

Office of Clerk and Recorder, County of LINCOLN. This "corner record" was filed for record on JULY 25, 1997 was noted on the cross-index plat and is assigned page No. 9696 in book No. CORAL M. CUMMINGS

County Official *By DB*



● - corner this sheet

Cross Index No. 4 HES 502 T. 36N R. 31W P.M., MT