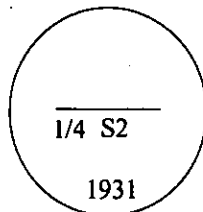


# CERTIFIED CORNER RECORDATION

Corner N 1/4 Sec. 2 T. 36N R. 31W P.M., MT Lincoln County

- I. 1931 original G.L.O. record by Ranney Y. Lyman: Set an iron post, 3 ft. long, 1 in. diam., 28 ins. in the ground, for 1/4 cor. of sec. 2 only, with a brass cap mkd:



from which:

- A fir, 12 ins. diam., bears S12 1/2°E, 42 lks. dist., mkd. "1/4 S2 BT".  
A fir, 6 ins. diam., bears S52 3/4°W, 42 lks. dist., mkd. "1/4 S2 BT".

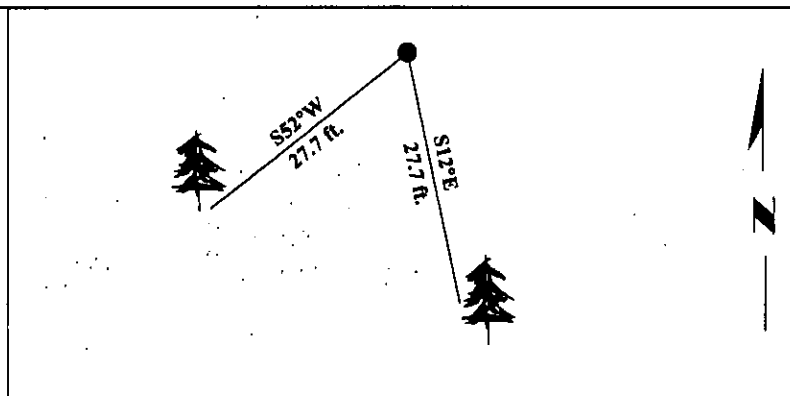
- II. Found an iron pipe, 1 in. diam, firmly set, with a brass cap, 2 1/2 ins. diam, 8 ins. above the ground, mkd. as shown above.

from which:

- A fir, 18 ins. diam., bears S12°E, 27.7 ft. (42 lks.) dist., with healed face.  
A fir, 14 ins. diam., bears S52°W, 27.7 ft. (42 lks.) dist., with healed face.

- III. Painted bearing trees and attached Land Survey Monument and Bearing Tree signs.

Magnetic Declination: 20° East.

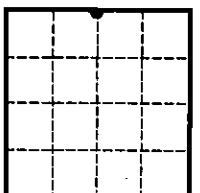


SKETCH OF CORNER

CERTIFICATION	
i. <u>Mark A. Federman</u>	certify the information shown herein is true and correct.
<i>Mark A. Federman</i>	
ii. <u>Alvah F. Hughes</u>	certify that this Corner Record correctly represents work performed by me or under my direction in compliance with the "Corner Recordation Act" (70-22-101, et seq., M.C.A.)
<i>Alvah F. Hughes</i>	
Date: <u>1/23/96</u>	Signature of Surveyor & Seal
Reg. No.: <u>7322LS</u>	
Employer: <u>U.S. FOREST SERVICE</u>	

Office of Clerk and Recorder, County of LINCOLN. This "corner record" was filed for record on JULY 25, 1997 was noted on the cross-index plat and is assigned page No. 9695 in book No. CORAL M. CUMMINGS

County Official *By DER*



• - corner this sheet