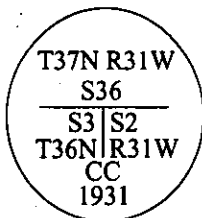


CERTIFIED CORNER RECORDATION

Corner CC Sec. Cor. Sec. 2 / 3 T. 36N R. 31W P.M., MT Lincoln County

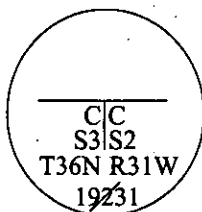
- I. 1931 original G.L.O. record by Ranney Y. Lyman: Set an iron post, 3 ft. long, 2 in. diam., 28 ins. in the ground, for the closing corner of secs. 2 and 3, with a brass cap mkd:



from which:

A tamarack, 20 ins. diam., bears S 46° 30'E, 42 lks. dist., mkd. "T36N R31W S2 CC BT".
A fir, 5 ins. diam., bears S 43° 30'W, 19 lks. dist., mkd. "T36N R31W S3 CC BT".

- II. Found an iron pipe, 2 in. diam, firmly set, with a brass cap, 2 1/2 ins. diam, 6 ins. above the ground, mkd.:



from which:

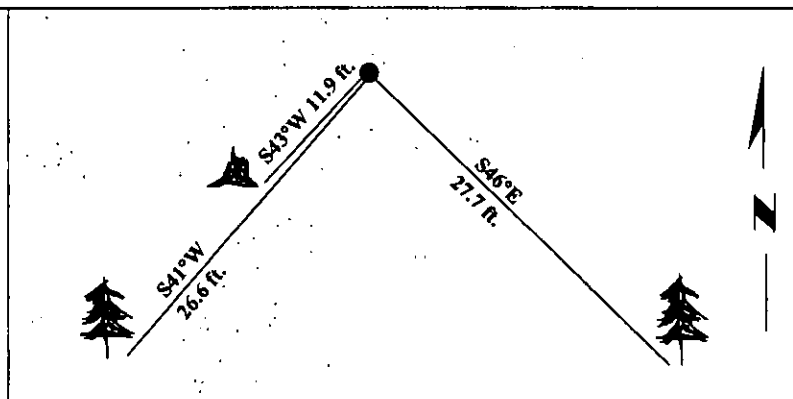
A fir, 21 ins. diam., bears S 46°E, 27.7 ft. (42 lks.) dist., with healed face. (Rec. tamarack).
A larch stump, 21 ins. diam., bears S 43°W, 11.9 ft. (18 lks.) dist., with visible scribing. (Rec. fir, 19 lks.)

- III. Established 1 new bearing tree:

A fir, 12 ins. diam., bears S 41°W, 26.6 ft. dist., mkd. "T36N R31W S3 BT".

Painted bearing trees and attached Land Survey Monument and Bearing Tree signs.

Magnetic Declination: 20° East.



SKETCH OF CORNER

CERTIFICATION

i. Mark A. Federman
certify the information shown herein is true and correct.

ii. Alvah F. Hughes
certify that this Corner Record correctly represents work performed by me or under my direction in compliance with the "Corner Recordation Act" (70-29-401, et seq., M.C.A.)

Signature of Surveyor & Seal

Date: 1/23/96

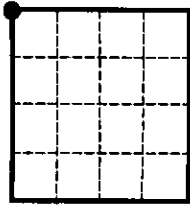
Reg. No.: 7322LS

Employer: U.S. FOREST SERVICE

Seal: ALVAH F. HUGHES 7322LS REGISTERED PROFESSIONAL LAND SURVEYOR

Office of Clerk and Recorder, County of LINCOLN. This "corner record" was filed for record on JULY 25, 1997 was noted on the cross-index plat and is assigned page No. 9694 in book No. CORAL M. CUMMINGS

County Official By ALB



• - corner this sheet