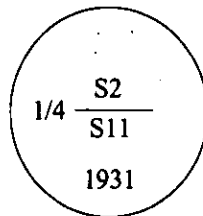


CERTIFIED CORNER RECORDATION

Corner 1/4 Sec. 2 / 11 T. 36N R. 31W P.M., MT Lincoln County

- I. 1931 original G.L.O. record by Ranney Y. Lyman: Set an iron post, 3 ft. long, 1 in. diam., 28 ins. in the ground, with a brass cap mkd:



from which:

- A pine, 9 ins. diam., bears S31°E, 23 lks. dist., mkd. "1/4 S11 BT".
A fir, 10 ins. diam., bears N39°W, 38 lks. dist., mkd. "1/4 S2 BT".

- II. Found an iron pipe, 1 in. diam, firmly set, with a brass cap, 2 1/2 ins. diam, 5 ins. above the ground, mkd. as shown above,

from which:

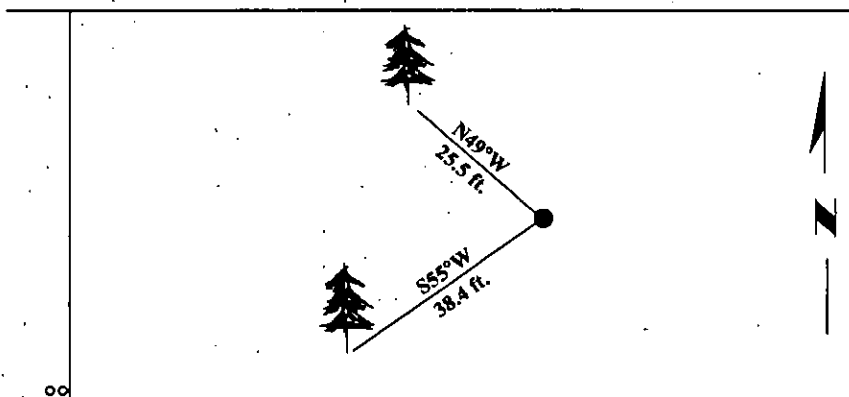
- A fir, 19 ins. diam., bears N49°W, 25.5 ft. (39 lks.) dist., with visible scribing. (Rec. N39°W, 38 lks.)

- III. Established 1 new bearing tree:

- A fir, 21 ins. diam., bears S55°W, 38.4 ft. dist., mkd. "1/4 S11 BT".

Painted bearing trees and attached Land Survey Monument and Bearing Tree signs.

Magnetic Declination: 20° East.



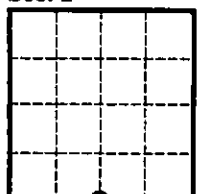
SKETCH OF CORNER

CERTIFICATION	
I. <u>Mark A. Federman</u>	certify the information shown herein is true and correct.
II. <u>Alvah F. Hughes</u>	certify that this Corner Record correctly represents work performed by me or under my direction in compliance with the "Corner Recordation Act" (70-22-101, et seq., M.C.A.)
Date: <u>1/24/96</u>	Signature of Surveyor & Seal
Reg. No.: <u>7322LS</u>	
Employer: <u>U.S. FOREST SERVICE</u>	

Office of Clerk and Recorder, County of LINCOLN. This "corner record" was filed for record on JULY 25, 1997 was noted on the cross-index plat and is assigned page No. 9693 in book No. CORAL M. COMMINGS

County Official

Sec. 2



• - corner this sheet