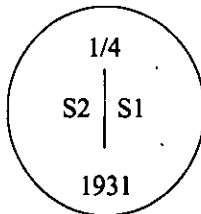


CERTIFIED CORNER RECORDATION

Corner 1/4 Sec. 1/2 T. 36N R. 31W P.M., MT Lincoln County

- I. 1931 original G.L.O. record by Ranney Y. Lyman: Set an iron post, 3 ft. long, 1 in. diam., 28 ins. in the ground, with a brass cap mkd:



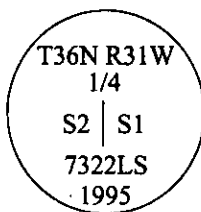
from which:

A tamarack, 8 ins. diam., bears N33° 30'E, 10 lks. dist., mkd. "1/4 S1 BT".
A tamarack, 14 ins. diam., bears N76° 0'W, 36 lks. dist., mkd. "1/4 S2 BT".

- II. Original monument destroyed as the position lies in a skid road.
Found remains of original bearing trees:

A fir stump, 13 ins. diam., with scribing "1 BT" visible. (Rec. tamarack, N33° 30'E)
A larch stump, 20 ins. diam., with scribing "1/4 S2" visible on cut section of trunk near stump.

- III. Set by distance-distance intersect from original bearing trees, a 30 in. long, 2 1/2 in. diam. alum. pipe with a 3 1/4 ins. diam. alum. cap, 23 ins. in the ground, mkd:

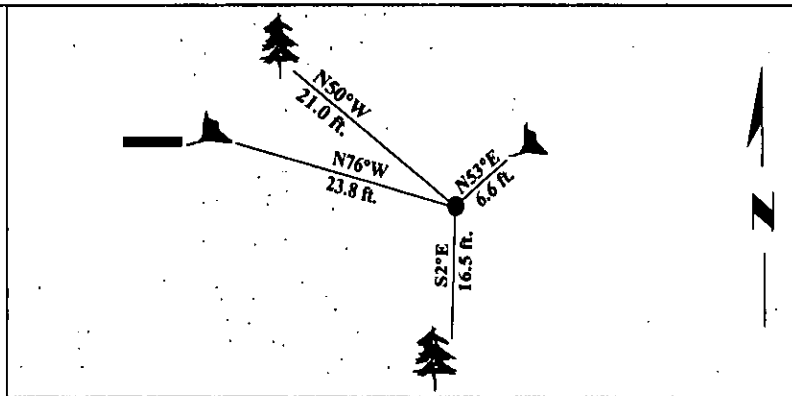


Established 2 new bearing trees:

A larch, 5 ins. diam., bears S2°E, 16.5 ft. dist., mkd. "1/4 S1 BT".
A pine, 7 ins. diam., bears N50°W, 21.0 ft. dist., mkd. "1/4 S2 BT".

Painted bearing trees and attached Land Survey Monument and Bearing Tree signs.
Set a steel guard post North, 3.0 ft. dist., with Land Survey Monument decal.

Magnetic Declination: 20° East.

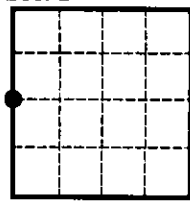


SKETCH OF CORNER

CERTIFICATION	
I. Mark A. Federman	certify the information shown herein is true and correct.
<i>Mark A. Federman</i>	
II. Alvah F. Hughes	certify that this Corner Record correctly represents work performed by me or under my direction in compliance with the "Corner Recordation Act", 70-22-101, et seq., M.C.A.)
<i>Alvah F. Hughes</i>	
Date:	1/26/96
Reg. No.:	7322LS
Employer:	U.S. FOREST SERVICE

Office of Clerk and Recorder, County of LINCOLN. This "corner record" was filed for record on JULY 25, 1997 was noted on the cross-index plat and is assigned page No. 9692 in book No. CORAL M. CUMMINGS By OUR

County Official



• - corner this sheet

Cross Index No. C-21 T. 36N R. 31W P.M., MT

Adopted July 1, 1981, Montana Board of Professional Engineers & Land Surveyors