

CERTIFIED CORNER RECORDATION

Corner No. 6 HES 1239 T. 36 N., R. 31 W., P.M.M. Lincoln County

Record :

1927 HES Survey by A.O. Modlin.

"Place a small stone marked with a cross (x) under an iron post, 36 ins. long, 24 ins. in the ground, with a brass cap marked 6 HES 1239 in the SW sector, 1927 in the S segment, and with a point on top for the exact corner point, from which:

A cross (x) on a Tamarack tree 8 ins. diam. bears N 21°09' E 39 lks. dist.

A cross (x) on a Spruce tree 4 ins. diam. bears S 37°20' E 29 lks. dist., each blazed and scribed 6 HES 1239 BT.

Raised a mound of earth 4 ft. base, 2 ft. high, SW of corner."

Found Evidence :

During a field search of the area, no corner or accessories were found. The area in which the search was conducted has an old logging road with high fill and cut slopes present, and I believe the above corner was destroyed during its construction.

Perpetuation :

A distance distance calculation was used to compute the location of Cor. No. 6 HES 1239. At the computed location, set a 3/4 inch diam. alum. cap marked as shown below, from which:

A Larch, 12 ins. diam., bears S 49° W, 22.80 ft. dist., scribed "6 HES 1239 BT."

A Douglas Fir, 4 ins. diam., bears N 51° W, 19.40 ft. dist., scribed "BT" at the base, with a scribed "x" chest height.

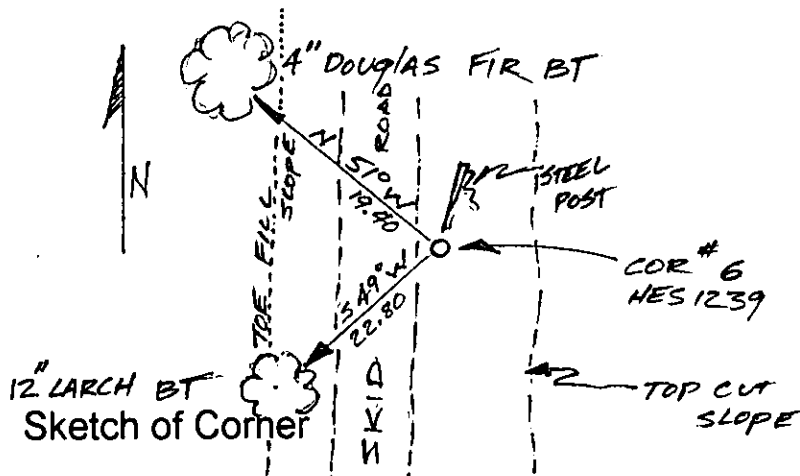
Raised a collar of stone 2 ft. wide and 1 ft. high around set monument.

Painted both scribed faces red and 6 inch wide bands around both trees.

Attached land survey monument and Bearing Tree signs to both trees.

Set a steel post 1.50 ft. northeasterly from monument with attached monument and property line stickers.

Magnetic Declination: 18° E



CERTIFICATION

I, John Damon

certify the information shown herein is true and correct

John Damon
Signature of Ground Party Chief

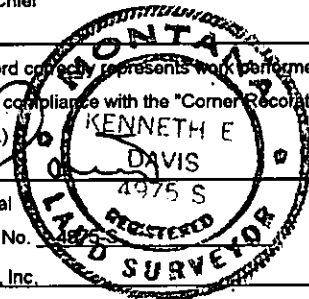
I, Ken E. Davis

certify that this Corner Record correctly represents work performed by me or under my direction in compliance with the "Corner Recordation Act" (70-22-101, et seq., M.C.A.)

Ken E. Davis
Signature of Surveyor & Seal

Date: 6/27/97 Reg. No. 4975 S

Employer: Davis Surveying, Inc.



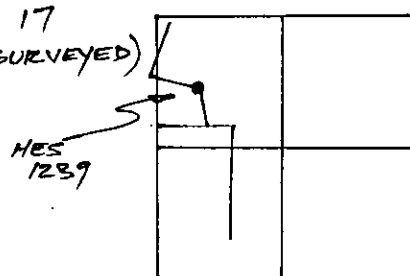
Office of Clerk and Recorder, County of LINCOLN

This "corner record" was filed for record on 6-30-97

was noted on the cross-index plat and is assigned page No. 9262

in book No. _____ CORAL M. CUMMINGS
County Official

Section 17
(UNSURVEYED)



Cross Index No. Cor. 6 HES 1239 T. 36 N., R. 31 W., PMM • THIS CORNER