

CERTIFIED CORNER RECORDATION

Corner No. 5 HES 1239 T. 36 N., R. 31 W., P.M.M. Lincoln County

Record :

1927 HES Survey by A.O. Modlin.

"Place a small stone marked with a cross (x) under a quartzite stone 24x5x5 ins., 14 ins. in the ground, marked 5 HES 1239 on the W face, and with a cross (x) on top for the exact corner point, from which:

A cross (x) on a Spruce tree 30 ins. diam. bears S 69°25' E, 177 lks. dist.

A cross (x) on a Spruce tree 8 ins. diam. bears S 40°25' E, 143 lks. dist., each blazed and scribed 5 HES 1239 BT.

Raised a mound of earth 4 ft. base, 2 ft. high, W of corner."

Found Evidence :

After extensive field search, the original stone memorial was found 16 ins. below the ground surface. No stone monument or Bearing Tree were recovered during field search and were believed to have been destroyed during farming of the area.

Perpetuation :

At the found position of the above mentioned stone memorial, we set a 2 1/2 inch diam. alum. pipe 30 ins. long, 24 ins. in the ground, with a 3 1/4 inch diam. alum. cap marked as shown below, from which:

A Spruce, 9 1/4 ins. diam., bears N 2° E, 33.45 ft. dist., scribed "5 HES 1239 BT."

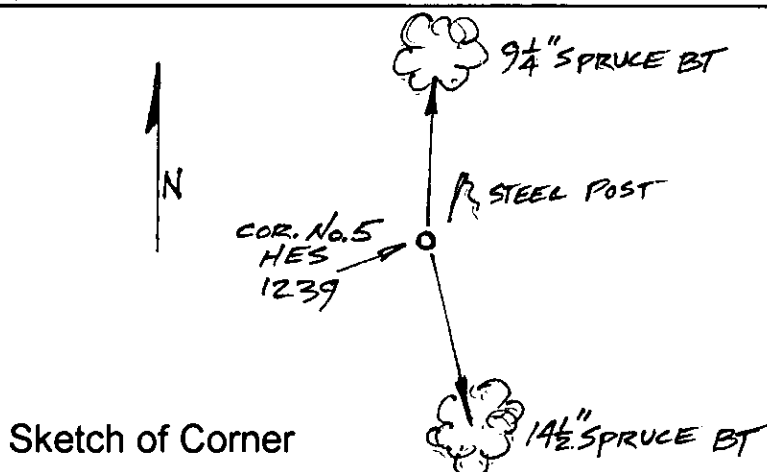
A Spruce, 14 1/2 ins. diam., bears S 14° E, 40.00 ft. dist., scribed 5 HES 1239 BT."

Painted both scribed faces red and 6 inch wide bands around both trees.

Attached land survey monument and Bearing Tree signs to both trees.

Set a steel post 1.50 ft. northeasterly from monument with attached monument and property line stickers.

Magnetic Declination: 18° E



CERTIFICATION

I, John Damon

certify the information shown herein is true and correct

Signature of Ground Party Chief

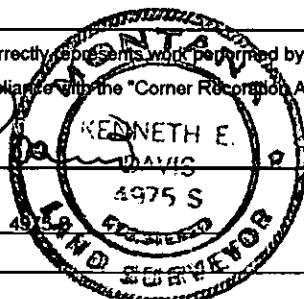
I, Ken E. Davis

certify that this Corner Record correctly represents work performed by me or under my direction in compliance with the "Corner Recordation Act" (70-22-101, et seq. M.C.A.)

Signature of Surveyor & Seal

Date: 6/27/97 Reg. No. 4975 S

Employer: Davis Surveying, Inc.



Section 18

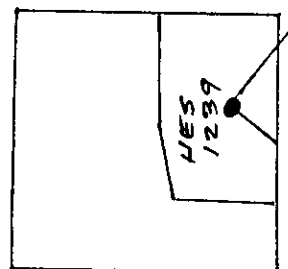
Office of Clerk and Recorder, County of LINCOLN

This "corner record" was filed for record on 6-30-97

was noted on the cross-index plat and is assigned page No. 9261

in book No. CORAL M. CUMMINGS By RB

County Official



Cross Index No. Cor. 5 HES 1239 T. 36 N., R. 31 W., PMM • THIS CORNER