

# CERTIFIED CORNER RECORDATION

Corner No. 7 HES 1239 T. 36 N., R. 31 W., P.M.M. Lincoln County

## Record :

1927 HES Survey by A.O. Modlin.

"Place a small stone marked with a cross (x) under an iron post 36 ins. long, 2 ins. diam., with a brass cap marked 7 HES 1239 in the NW sector, 1927 in the S segment, and with a point on top for the exact corner point, from which:

A cross (x) on a Douglas Fir tree 10 ins. diam. bears S 0°21' W 28 lks. dist.

A cross (x) on a Tamarack tree 7 ins. diam. bears N 60°30' E 19 lks. dist., each blazed and scribed 7 HES 1239 BT."

Raised a mound of earth 4 ft. base, 2 ft. high NW of corner."

## Found Evidence :

Found a 2 inch diam. steel pipe with a 2 ½ inch diam. brass cap 12 ins. above ground marked as shown below, from which:

A Larch 13 ½ ins. diam. bears N 60° E (N 60°30' E record) 12.40 ft. (12.54 ft. record) dist., with overgrown face.

A Douglas Fir 12 ins. diam. bears S 3° E (S 0°21'W record) 17.90 ft. (18.40 ft. record) dist., with overgrown face.

## Perpetuation :

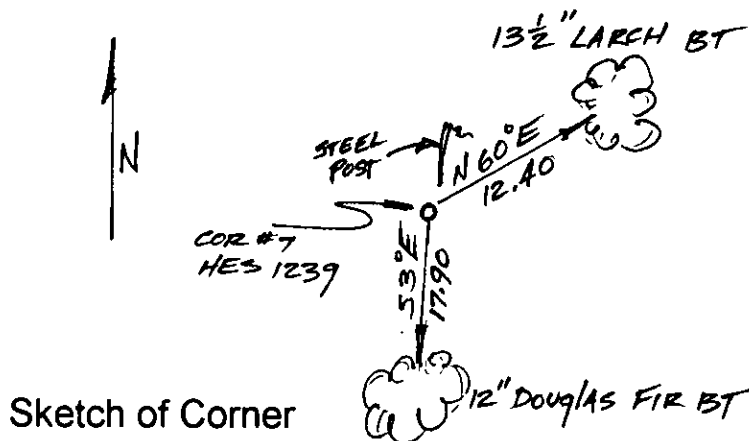
I accept the above marked brass cap for Cor. No. 7 HES 1239.

Attached land survey monument and Bearing Tree signs to both trees.

Painted 6 inch wide red bands around both trees.

Set a steel post 2 ft. northeasterly of corner with attached monument and property line stickers.

Magnetic Declination: 18° E



## CERTIFICATION

I, John Damon

certify the information shown herein is true and correct

John Damon  
Signature of Ground Party Chief

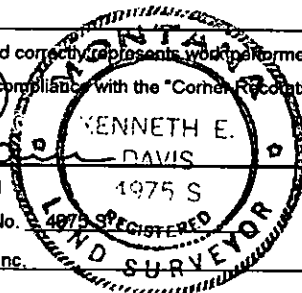
I, Ken E. Davis

certify that this Corner Record correctly represents work performed by me or under my direction in compliance with the "Corner Recordation Act" 70-22-101, et seq., M.C.A.

Ken E. Davis  
Signature of Surveyor & Seal

Date: 6/27/97 Reg. No. 4875

Employer: Davis Surveying, Inc.



Sketch of Corner

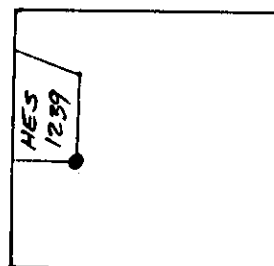
Office of Clerk and Recorder, County of LINCOLN

This "corner record" was filed for record on 6-30-97

was noted on the cross-index plat and is assigned page No. 9260  
in book No. \_\_\_\_\_

CORAL M. CUMMINGS  
County Official

Section 17  
(UNSURVEYED)



Cross Index No. Cor. 7 HES 1239 T. 36 N., R. 31 W., PMM • THIS CORNER