

# CERTIFIED CORNER RECORDATION

Corner No. 4 HES 1185 T. 36 N., R. 31 W., P.M.M. Lincoln County

## Record :

1922 HES Survey by J.F. Pfau.

"Place a small stone marked with a cross (x) under a quartzite stone 28x18x8 ins., 18 ins. in the ground, marked 4 HES 1185 on SW face, and a cross (x) on top for the exact cor. point, from which:

A cross (x) on a Lodgepole Pine tree 10 ins. diam. bears S 17° E 14 lks. dist.

A cross (x) on a Tamarack tree 10 ins. diam. bears S 38°20' W 35 lks. dist., each blazed and scribed 4 HES 1185 BT."

Raised a mound of earth 4 ft. base, 2 ft. high SW of cor."

## Found Evidence :

Found a quartzite stone 16x7 ins., 12 ins. exposed above ground, marked 4 HES 1185 on the SW face, with a cross (x) on top from which:

A Larch 12 1/2 ins. diam. bears S 37° W (S 38°20' W record) 23.10 feet dist., with overgrown face.

A Lodgepole Pine snag with visible scribing has fallen over and bears southeasterly of stone monument, no dist. measured due to being unable to determine exact original position.

A mound of earth bears southeasterly of stone monument.

## Perpetuation :

I accept the above marked stone for Cor. No. 4 HES 1185.

We established one new Bearing Tree described as follows:

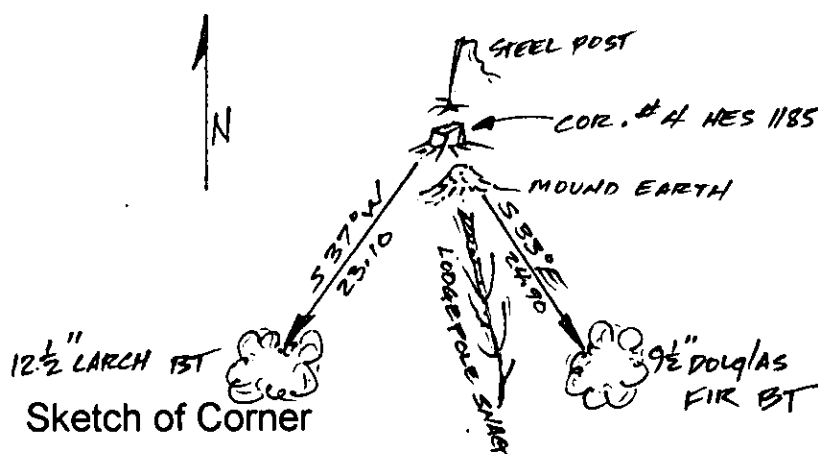
A Douglas Fir 9 1/2 ins. diam. bears S 33° E 24.90 ft. dist. scribed "4 HES 1185 BT".

Painted scribed face red and 6 inch wide band around Bearing Tree.

Attached land survey monument and Bearing Tree sign to Bearing Tree.

Set a steel post 1 ft. NE of corner with attached monument and property line stickers.

Magnetic Declination: 18° E



## CERTIFICATION

I, John Damon

certify the information shown herein is true and correct

John Damon

Signature of Ground Party Chief

I, Ken E. Davis

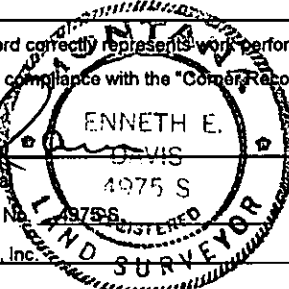
certify that this Corner Record correctly represents work performed by me or under my direction in compliance with the "Corner Recordation Act" (70-22-101, et seq., M.C.A.)

Ken E. Davis

Signature of Surveyor & Seal

Date: 6/27/97 Reg. No. 4975 S

Employer: Davis Surveying, Inc.



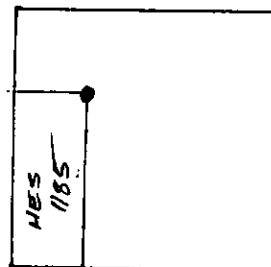
Office of Clerk and Recorder, County of LINCOLN

This "corner record" was filed for record on 6-30-97

was noted on the cross-index plat and is assigned page No. 9259

in book No. \_\_\_\_\_ CORAL M. CUMMINGS  
County Official

Section 17  
(UNSURVEYED)



Cross Index No. Cor. 4 HES 1185 T. 36 N., R. 31 W., PMM • THIS CORNER