

# CERTIFIED CORNER RECORDATION

Corner No. 5 HES 1185 T. 36 N., R. 31 W., P.M.M. Lincoln County

## Record :

1922 HES Survey by J.F. Pfau.

"Place a small stone marked with a cross (x) under a slatestone 26x14x6 ins., 16 ins. in the ground, marked 5 HES 1185 on NW face, and a cross (x) on top for the exact cor. point, from which:

A cross (x) on a Lodgepole Pine tree 14 ins. diam. bears N 4°30' E 43 lks. dist.

A cross (x) on a Lodgepole Pine tree 6 ins. diam. bears N 27°30' W 35 lks. dist., each blazed and scribed 5 H.E.S. 1185 BT."

Raised a mound of stone 4 ft. base, 2 ft. high NW of cor."

## Found Evidence :

Found a slatestone 14x4 ins., 6 ins. exposed above ground, marked 5 HES 1185 on the NW face, with a (x) on top, from which:

A Lodgepole Pine stump with broken off log bears N 29° W (N 27°30' W record) 23.10 feet dist., with visible scribing.

A Lodgepole Pine snag bears N 4° E (N 4°30' E record) 28.38 ft. dist., with visible scribing.

A mound of stone bears NW of corner.

## Perpetuation :

I accept the marked stone for Cor. No. 5 HES 1185.

We established two new bearing trees described as follows:

A Spruce 11 ins. diam. bears N 60° W 21.70 ft. dist. scribed "5 HES 1185 BT"..

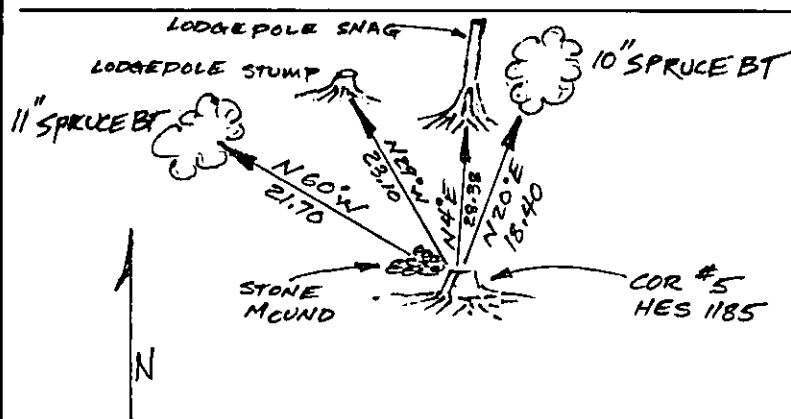
A Spruce 10 ins. diam. bears N 20° E 18.40 ft. dist. scribed "5 HES 1185 BT".

Painted both scribed faces red and 6 inch wide bands around both trees.

Set a steel post 3 ft. southeasterly of monument with attached monument and property line stickers.

Attached land survey monument and Bearing Tree signs to both trees.

Magnetic Declination: 18° E



Sketch of Corner

## CERTIFICATION

I, John Damon

certify the information shown herein is true and correct

John Damon

Signature of Ground Party Chief

I, Ken E. Davis

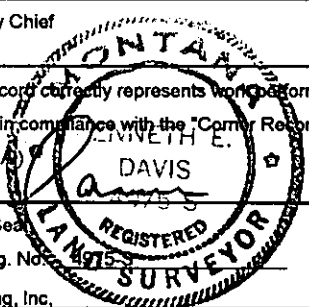
certify that this Corner Record correctly represents work performed by me or under my direction in compliance with the "Corner Restoration Act" (70-22-101, et seq., M.G.A.)

Ken E. Davis

Signature of Surveyor & Seal

Date: 6/27/97 Reg. No. 4915-3

Employer: Davis Surveying, Inc.

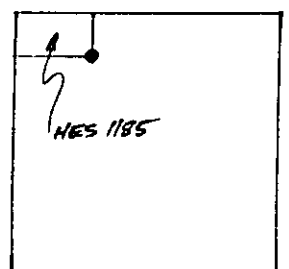


Office of Clerk and Recorder, County of LINCOLN

This "corner record" was filed for record on 6-30-97  
was noted on the cross-index plat and is assigned page No. 9258  
in book No. \_\_\_\_\_

CORAL M. CHAMMINGS  
County Official

Section 20  
(UNSURVEYED)



Cross Index No. Cor. 5 HES 1185 T. 36 N., R. 31 W., PMM • THIS CORNER