

CERTIFIED LAND CORNER RECORDATION

SECTION 6 HOMESTEAD ENTRY SURVEY TWP. 36 N., R. 31 W., P.M.M.

DESCRIPTION OF CORNER EVIDENCE FOUND, AND ORIGINAL RECORD (IF KNOWN)

Found remains of Cor. # 1 of HES # 486 SEE REVERSE SIDE

Found remains of Cor. # 5 UPPER FORD RANGER STATION - SEE REVERSE SIDE

DESCRIPTION OF MONUMENT AND ACCESSORIES ESTABLISHED  
TO PERPETUATE THE ORIGINAL LOCATION OF THIS CORNER:

Office

Date of work: May 1980

SEE DIAGRAM ON REVERSE SIDE

Completed

SKETCH, WITH COURSE AND DISTANCE TO ADJACENT CORNERS IF DETERMINED IN THIS SURVEY.  
(MAY SKETCH OR PASTE REPRODUCTION ON REVERSE SIDE.)  
SEE DIAGRAM ON REVERSE SIDE

Surveyor's Seal

Jack H. Ninneman 4661 S

I, .....  
certify that the information shown herein is true and  
correct.

*Jack H. Ninneman*  
Signature of Ground Party Chief

I, J. H. Ninneman  
certify that I have carefully performed or reviewed the  
work done on the diagrammed corner as reported on this  
recordation form and approve the same.

*Jack H. Ninneman*  
Signature of Surveyor

DIAGRAM OF CORNER:

N.  
SEE REVERSE SIDE

= Corner recorded on the sheet

4661 S  
Registration Number

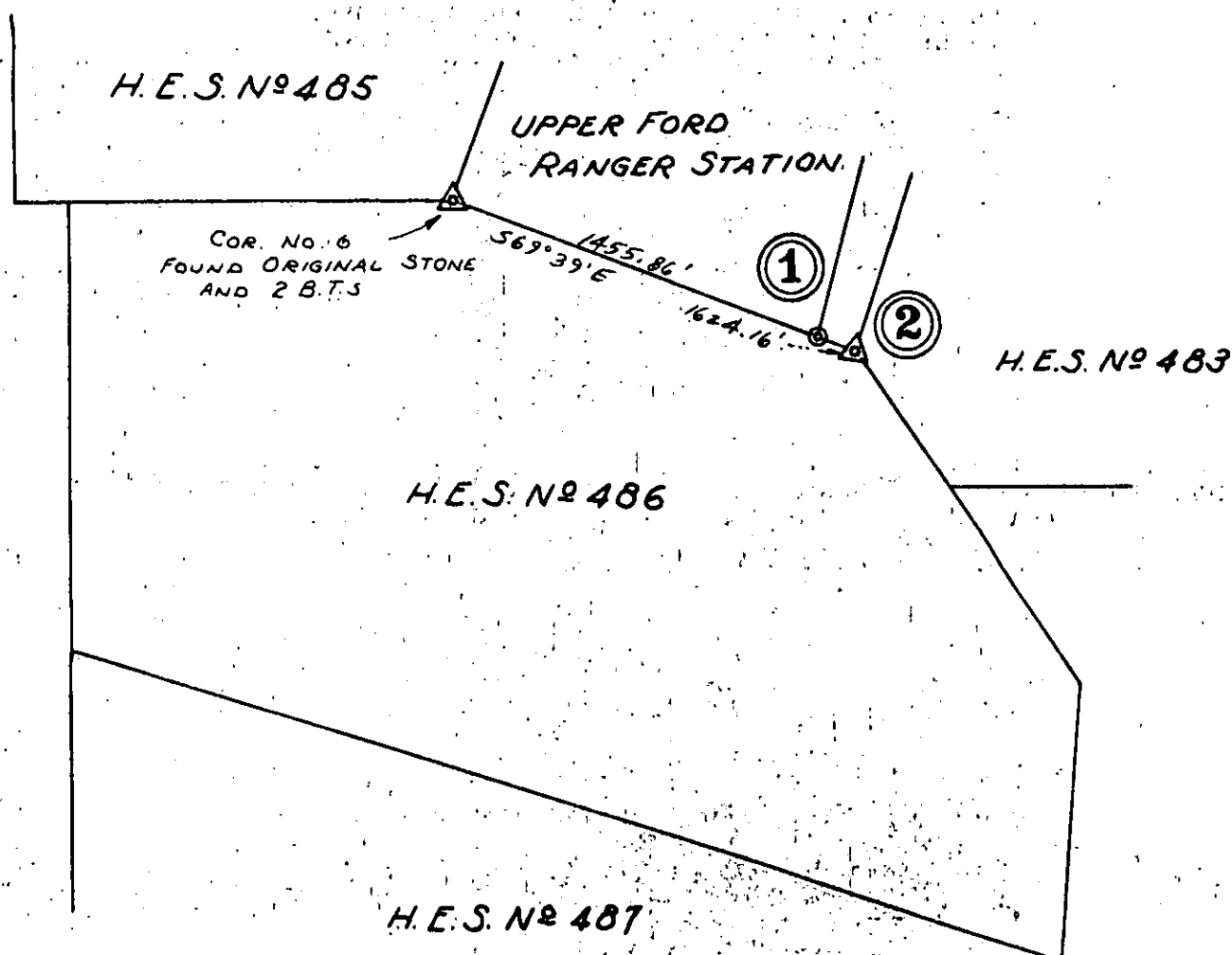
Office of Clerk and Recorder, County of Lincoln

This "corner record" was filed for record on the 31<sup>st</sup> day of July 1980, was noted on the cross-index plat and is  
assigned page No. 885, in book No. ....

*Edmond L. Vaughn* by *Cherry L. Hawks*  
County Official Deputy

# Sec. Twp. 36 N., R. 31 W., M.P.M.

77



- (1) Corner No. 5 Ranger Station  
Found Pipe and Remains of Post  
Replaced with Capped Steel Rod 5/8" by 24"  
Cap Stamped; J.H.N. 4661 S.
- (2) Corner No. 1 H.E.S. 486  
Found Original Stone (Washed Out) and 2 B.T.s.  
Reset Stone Alongside Capped 5/8" by 24" Steel Rod  
Cap Stamped: J.H.N. 4661 S.

