

CERTIFIED LAND CORNER RECORDATION

DESCRIPTION OF CORNER EVIDENCE FOUND, AND ORIGINAL RECORD (IF KNOWN)

- H.E.S. No. 282, Corner No. 1 -- No evidence found. Record calls for wood post for corner, 12 in. Spruce bears N34 20'W 11 lks., 10 in. Black Pine bears N32 06'E 25 lks., mound of earth NE of corner.
- H.E.S. No. 282, Corner No. 2 -- Found BT's and remains of post. Original record calls for wood post at corner, 12 in. Spruce bears S22 30'W 23 lks., 14 in. Spruce bears N62 12'E 22 lks., mound of earth SE of corner.
- H.E.S. No. 838, Corner No. 2 -- 5 in. Spruce bears N32 01'W 15 lks., 12 in. Spruce bears S82 49'W 33 lks.

(CONTINUED ON REVERSE)

DESCRIPTION OF MONUMENT AND ACCESSORIES ESTABLISHED TO PERPETUATE THE ORIGINAL LOCATION OF THIS CORNER:

Date of work: Nov. 1978

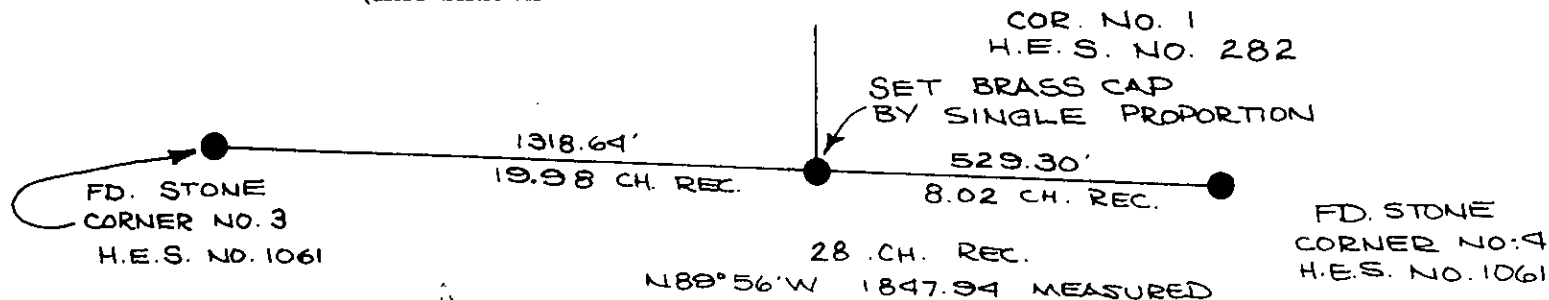
I set a 2" pipe w/Brass Cap for Corner No. 1 of H.E.S. No. 282.

I set a 2" pipe w/Brass Cap for Corner No. 2 of H.E.S. No. 282.

I set a 2" pipe w/Brass Cap for Corner No. 1 of H.E.S. No. 275.

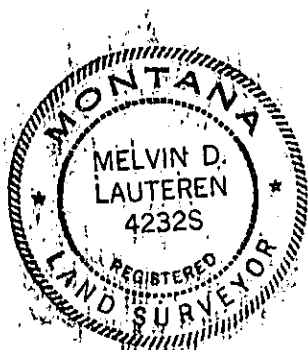
(SEE REVERSE FOR SKETCHES)

SKETCH, WITH COURSE AND DISTANCE TO ADJACENT CORNERS IF DETERMINED IN THIS SURVEY. (MAY SKETCH OR PASTE REPRODUCTION ON REVERSE SIDE.)



(SEE REVERSE FOR CORNER NO. 1 H.E.S. NO. 275 AND FOR CORNER NO 2 H.E.S. 282)

Surveyor's Seal



I, Tom Davis
certify that the information shown herein is true and correct.

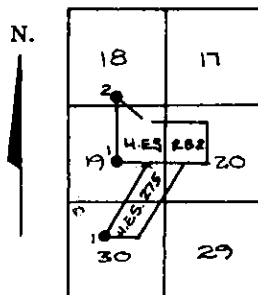
Tom D. Davis
Signature of Ground Party Chief

I, Melvin D. Lauteren
certify that I have carefully performed or reviewed the work done on the diagrammed corner as reported on this recordation form and approve the same.

Melvin D. Lauteren
Signature of Surveyor

4232-S
Registration Number

DIAGRAM OF CORNER:



● = Corner recorded on the sheet

CORNER NO. 1 & 2 OF
H.E.S. NO. 282 AND
CORNER NO. 1 OF
H.E.S. NO. 275

Office of Clerk and Recorder, County of Lincoln

This "corner record" was filed for record on the 27th day of November, 1978, was noted on the cross-index plat and assigned page No. 539, in book No. 539

Glenore L. Tappan by Barry Paul
County Official Deputy

EVIDENCE FOUND ORIGINAL RECORD (CONT'D)

h.E.S. No. 275, Corner No. 1 -- Found BT's and stone mound, original record calls for post at corner, 9 in. Black Pine bears S48 25'W 51 lks., a 5 in Black Pine bears N04 50'E 43 lks.

