

INSTRUCTIONS

1. Original and/or subsequent record used to evaluate the corner position.
2. Description of evidence found, note discrepancies in the record, state method of establishing lost or obliterated corners.
3. Description of monument and accessories set to perpetuate the corner position.
4. Sketch of corner, show all pertinent data which can best be shown in a sketch example, corner marking, topography ties, position of accessories, etc.
5. Certification must be signed and sealed by Land Surveyor registered in the State of Montana.
6. Fill in Cross Index & Section Diagram at bottom of sheet.

CERTIFIED CORNER RECORDATION

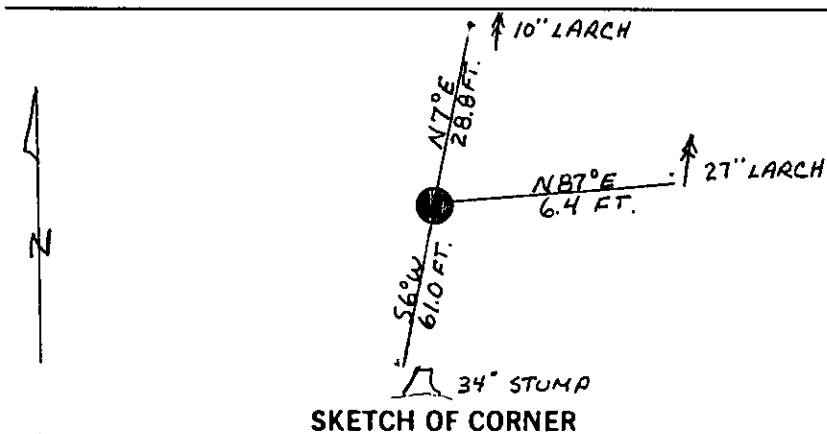
Corner 2 of HES 483 T. 36 N. R. 31 W. P.M.M. Lincoln County

- I. 1915 H.E.S. original record by Fred E. Thieme: Set for Cor. No. 2, a small stone mkd. with a cross (x) under a quartzite stone, 24x12x9 ins., 14 ins. in the ground, mkd. 2 HES 483 on SW face, and a cross (x) on top for the exact corner point, from which,
- A cross (x) on a larch tree, 26 ins. diam., bears $N86^{\circ}05'E$, 10 lks. (6.60 ft.) dist.
- A cross (x) on a larch tree, 34 ins. diam., bears $S4^{\circ}30'W$, 93 lks. (61.38 ft.) dist.
- Each blazed and scribed 2 HES 483 BT.
- Raise a mound of stone, 4 ft. base, 2 ft. high, SW of corner.
- II. Found a 12x9 ins. stone, firmly set, protruding 8 ins. out of the ground, mkd. 2 HES 483 on SW face and a cross on top. Mound of stone, 3 ft. diam., 1 ft. high, SW of corner.
- from which
- A larch, 27 ins. diam., bears $N87^{\circ}E$, 6.4 ft. dist., overgrown blaze.
- A larch stump, 34 ins. diam., bears $S6^{\circ}W$, 61.0 ft. dist., mkd. 2 HES 483 BT.
- III. Established one new bearing tree
- A larch, 10 ins. dia., bears $N7^{\circ}E$, 28.8 ft. dist., mkd. 2 HES 483 BT.

Painted red bands around the bearing trees and attached Land Survey Monument and Bearing Tree signs.

Set a 6 ft. galvanized steel guard post with Land Survey Marker and Property Boundary decals, East, 3 ft.

Magnetic declination: 20° East.



SKETCH OF CORNER

CERTIFICATION

I, Kevin A. Todd
certify the information shown herein is true and correct.

Kevin A. Todd
Signature Ground Party Chief

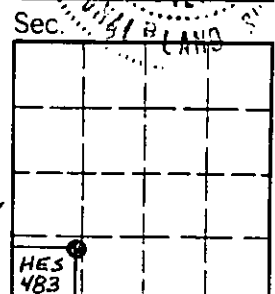
I, Alvah F. Hughes
certify that this Corner Record correctly represents work performed by me or under my direction in compliance with the "Corner Recordation Act" (70-22-101, et seq., M.C.A.)

Alvah F. Hughes
Signature of Surveyor & Seal
Date: 1/8/91 Reg. No. 7322
Employer: U.S. FOREST SERVICE

Office of Clerk and Recorder, County of Lincoln. This "corner record" was filed for record on 2-5-91 was noted on the cross-index plat and is assigned page No. 4524, in book No. _____

Coral M. Cummings by Bit Bank
County Official

2 HES 483 36 N 31 W
Cross Index No. _____ T. _____ R. _____ P.M.M.



• - corner this sheet