

## INSTRUCTIONS

1. Original and/or subsequent record used to evaluate the corner position.
2. Description of evidence found, note discrepancies in the record, state method of establishing lost or obliterated corners.
3. Description of monument and accessories set to perpetuate the corner position.
4. Sketch of corner, show all pertinent data which can best be shown in a sketch example, corner marking, topography ties, position of accessories, etc.
5. Certification must be signed and sealed by Land Surveyor registered in the State of Montana.
6. Fill in Cross Index & Section Diagram at bottom of sheet.

## CERTIFIED CORNER RECORDATION

Corner 3 of HES 483 T. 36 N. R. 31 W. P.M.M. Lincoln County

- I. 1915 H.E.S. original record by Fred E. Thieme: Set for Cor. No. 3, a small stone mkd. with a cross (x) under a shale stone, 26x10x7 ins., 16 ins. in the ground, mkd. 3 HES 483 on NW face, and a cross (x) on top for the exact corner point, from which,

A cross (x) on a larch tree, 14 ins. diam., bears  $N2^{\circ}30'E$ , 57 lks. (37.62 ft.) dist.

A cross (x) on a larch tree, 48 ins. diam., bears  $N47^{\circ}45'W$ , 60 lks. (39.60 ft.) dist.

Each blazed and scribed 3 HES 483 BT.

Raise a mound of stone, 4 ft. base, 2 ft. high, NW of corner.

- II. Found a 11x7 ins. stone, firmly set, protruding 12ins. out of the ground, mkd. 3 HES 483 on NW face and a cross on top. Mound of stone, 3 ft. diam., 1 ft. high, NW of corner.

from which

A larch stump, 19 ins. diam., bears  $N3^{\circ}E$ , 37.7 ft. dist., visible scribing.

A larch stump, 41 ins. diam., bears  $N45^{\circ}W$ , 39.6 ft. dist., visible scribing

- III. Established two new bearing trees

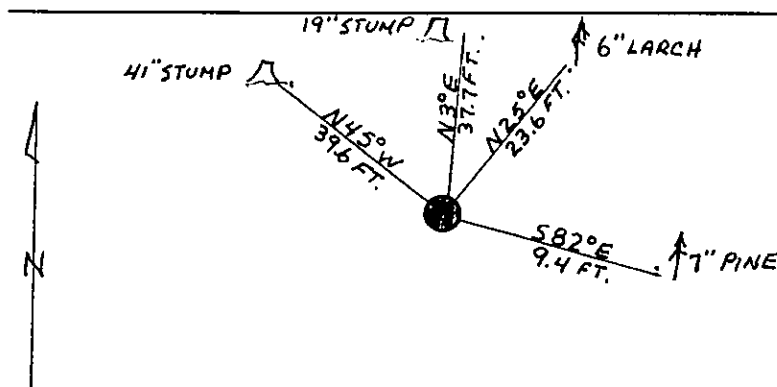
A larch, 6 ins. diam., bears  $N25^{\circ}E$ , 23.6 ft. dist., mkd. X BT.

A lodgepole pine, 7 ins. diam., bears  $S82^{\circ}E$ , 9.4 ft. dist., mkd. COR 3 HES 483 BT.

Painted red bands around the bearing trees and attached Land Survey Monument and Bearing Tree signs.

Set a 6 ft. galvanized steel guard post with Land Survey Marker and Property Boundary decals, North, 3 ft.

Magnetic declination:  $20^{\circ}$  East.



SKETCH OF CORNER

## CERTIFICATION

I, Kevin A. Todd  
certify the information shown herein is true and correct.

Kevin A. Todd  
Signature Ground Party Chief

I, Alvah F. Hughes  
certify that this Corner Record correctly represents work performed by me or under my direction in compliance with the "Corner Recordation Act" (70-22-101, et seq., M.C.A.).

Alvah F. Hughes  
Signature of Surveyor

Date: 1/8/91 Reg. No. 7322

Employer: U.S. FOREST SERVICE

Office of Clerk and Recorder, County of Lincoln. This "corner record" was filed for record on 2-5-91

was noted on the cross-index plat and is assigned page No. 4523, in

book No. \_\_\_\_\_

Coral McCummings by Bill Brink  
County Official

3 HES 483

36 N 31 W

Cross Index No. \_\_\_\_\_ T. \_\_\_\_\_ R. \_\_\_\_\_ P.M.M.

Sec. 8				
HES 483				

• - corner this sheet