

INSTRUCTIONS

1. Original and/or subsequent record used to evaluate the corner position.
2. Description of evidence found, note discrepancies in the record, state method of establishing lost or obliterated corners.
3. Description of monument and accessories set to perpetuate the corner position.
4. Sketch of corner, show all pertinent data which can best be shown in a sketch example, corner marking, topography ties, position of accessories, etc.
5. Certification must be signed and sealed by Land Surveyor registered in the State of Montana.
6. Fill in Cross Index & Section Diagram at bottom of sheet.

CERTIFIED CORNER RECORDATION

Corner 6 of HES 483 T. 36 N. R. 31 W. P.M.M. Lincoln County

- I. 1915 H.E.S. original record by Fred E. Thieme: Set for Cor. No. 6, a small stone mkd. with a cross (x) under a conglomerate stone, 26x10x7 ins., 16 ins. in the ground, mkd. 6 HES 483 on NE face, and a cross (x) on top for the exact corner point, from which,

A cross (x) on a larch tree, 12 ins. diam., bears $N63^{\circ}52'E$, 34 lks. (22.44 ft.) dist.

A cross (x) on a larch tree, 7 ins. diam., bears $S44^{\circ}27'E$, 34 lks. (22.44 ft.) dist.

Each blazed and scribed 6 HES 483 BT.

Raise a mound of stone, 4 ft. base, 2 ft. high, NE of corner.

- II. Found a 9x7 ins. stone, firmly set, protruding 8 ins. out of the ground, mkd. 6 HES 483 on NE face and a cross on top. Mound of stone, 3 ft. diam., 1 ft. high, NE of corner.

from which

A larch, 18 ins. diam., bears $N64^{\circ}E$, 22.2 ft. dist., overgrown blaze.

Larch to the SE obliterated by logging activities.

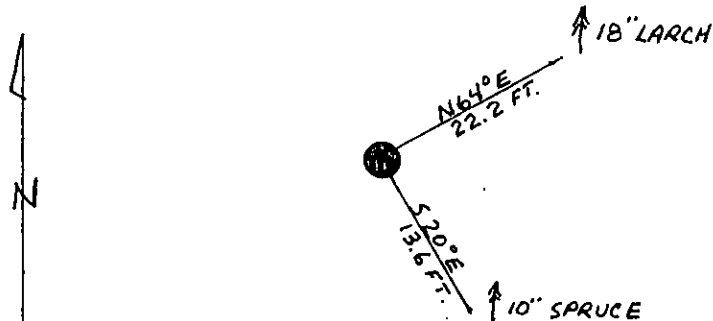
- III. Established one new bearing tree

A spruce, 10 ins. dia., bears $S20^{\circ}E$, 13.6 ft. dist., mkd. 6 HES 483 BT.

Painted red bands around the bearing trees and attached Land Survey Monument and Bearing Tree signs.

Set a 6 ft. galvanized steel guard post with Land Survey Marker and Property Boundary decals, West, 3 ft.

Magnetic declination: 20° East.



SKETCH OF CORNER

CERTIFICATION

1. Kevin A. Todd

certify the information shown herein is true and correct.

Kevin A. Todd

Signature Ground Party Chief

1. Alvah F. Hughes

certify that this Corner Record correctly represents work performed by me or under my direction in compliance with the "Corner Recordation Act" (70-22-101, et seq., M.C.A.)

Alvah F. Hughes

Signature of Surveyor & Seal

Date: 1/8/91

Reg. No. 73223

Employer: U.S. FOREST SERVICE

Office of Clerk and Recorder, County of Lincoln. This "corner record" was filed for record on 2-5-91

was noted on the cross-index plat and is assigned page No. 4522, in

book No. _____

Coral McCummings by Biv Buehl

County Official

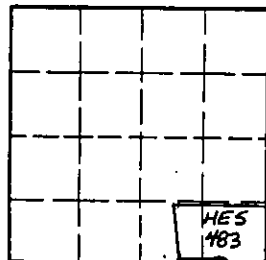
6 HES 483

36 N

31 W

Cross Index No. _____ T. _____ R. _____ P.M.M.

Sec. 6 T. 36 N R. 31 W



• - corner this sheet