

INSTRUCTIONS

1. Original and/or subsequent record used to evaluate the corner position.
2. Description of evidence found, note discrepancies in the record, state method of establishing lost or obliterated corners.
3. Description of monument and accessories set to perpetuate the corner position.
4. Sketch of corner, show all pertinent data which can best be shown in a sketch example, corner marking, topography ties, position of accessories, etc.
5. Certification must be signed and sealed by Land Surveyor registered in the State of Montana.
6. Fill in Cross Index & Section Diagram at bottom of sheet.

CERTIFIED CORNER RECORDATION

Corner 6 of HES 403 T. 36 N. R. 31 W. P.M.M. Lincoln County

- I. Original, 1915 HES record by Fred E. Thieme: "Set for Cor. No. 6, a small stone, marked with a cross (x) under a quartzite stone, 24x16x9 ins., 14 ins. in the ground, marked 6 H.E.S. 403 on E. face, and a cross (x) on top for the exact corner point, from which

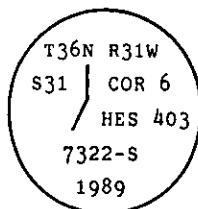
A cross (x) on a lodgepole pine tree, 8 ins. dia., bears N62°20'E, 14 lks. dist.

A cross (x) on a lodgepole pine tree, 10 ins. dia., bears S62°49'E, 14 lks. dist.; each blazed and scribed 6 H.E.S. 403 BT.

Raise a mound of earth, 4 ft. base, 2 ft. high, E. of corner."

- II. Found a set stone, 12x6 ins., 6 ins. out of ground, marked 6-HES 403 on East face. No original bearing trees found, as these positions fall in cut slope of a road. No mound of earth evident. Upon remonumentation a small stone, 3x3x5 ins., with a large X mark was found under the stone monument.

- III. At the corner position, replaced the original stone with a 2 1/2 in. dia. by 30 in. aluminum pipe, 5 ins. out of the ground with a 3 1/4 in. dia., U.S.D.A., Forest Service, aluminum cap marked as shown:



I established two new bearing trees:

A larch, 5 ins. dia., bears S34°W, 17.5 ft. dist., scribed X BT.

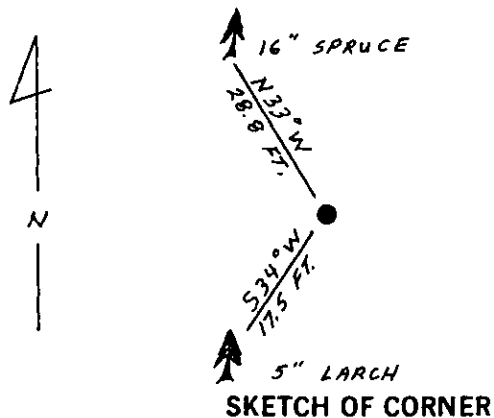
A spruce, 16 ins. dia., bears N33°W, 28.8 ft. dist., scribed 6 HES 403 BT.

Painted red bands around the bearing trees and attached Land Survey Monument and Bearing Tree signs.

Set a 6 ft. galvanized steel guard post with Land Survey Marker and Property Boundary decals, S22°W, 2.6 ft.

Buried 3x3x5 in. X stone underneath and original stone monument alongside new aluminum monument.

Magnetic Declination: 20°30' East



CERTIFICATION

I, Gary C. Crismon
certify the information shown herein is true and correct.

Gary C. Crismon
Signature Ground Party Chief

I, Alvah F. Hughes
certify that this Corner Record correctly represents work performed by me or under my direction in compliance with the "Corner Recordation Act" (70-22-101, et seq., M.C.A.)

Alvah F. Hughes
Signature of Surveyor & Seal

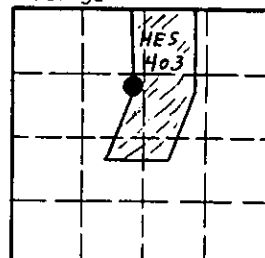
Date: 12/20/89 Reg. No. 7322-S

Employer: U.S. FOREST SERVICE

Office of Clerk and Recorder, County of Lincoln. This "corner record" was filed for record on Dec 29, 1989 was noted on the cross-index plat and is assigned page No. 4175, in book No. _____

Garret St. Sigal by Bill Sigal
County Official

Sec. 31



• - corner this sheet

Cross Index No. 6 HES 403 T. 36 N R. 31 W P.M.M.