

INSTRUCTIONS

1. Original and/or subsequent record used to evaluate the corner position.
2. Description of evidence found, note discrepancies in the record, state method of establishing lost or obliterated corners.
3. Description of monument and accessories set to perpetuate the corner position.
4. Sketch of corner, show all pertinent data which can best be shown in a sketch example, corner marking, topography ties, position of accessories, etc.
5. Certification must be signed and sealed by Land Surveyor registered in the State of Montana.
6. Fill in Cross Index & Section Diagram at bottom of sheet.

CERTIFIED CORNER RECORDATION

2 of HES 402
 Corner 5 of HES 403 T. 36 N., R. 31 W., P.M.M. Lincoln County

- I. 1915, original HES's 402 & 403 record by Fred E. Thieme: HES 402; "Set for Cor. No. 2, a small stone marked with a cross (x) under a slate stone 24x12x6 ins., 14 ins. in the ground, marked 2 H.E.S. 402 on SE. face, and a cross (x) on top for the exact corner point, from which

A cross (x) on a larch tree, 30 ins. dia., bears N12°03'E, 39 lks. dist.

A cross (x) on a larch tree, 13 ins. dia., bears S8°00'E, 38 lks. dist.; each blazed and scribed 2 H.E.S. 402 BT.

Raise a mound of stone, 4 ft. base, 2 ft. high, SE. of corner."

HES 403; "Identical with Cor. No. 2 of unapproved H.E.S. No. 402, a slate stone 10x12x6 ins. above ground, as set by me on August 7, 1915. I mark this stone for Cor. No. 5, 5 H.E.S. 403 on NE. face." Note: uses same bearing trees as mentioned above, "each blazed and scribed 5 H.E.S. 403 BT. Raise a mound of stone 4 ft. base, 2 ft. high, NE. of corner."

- II. Found a set stone, 10x4 ins., 10 ins. out of the ground, marked 5-HES 403 on NE face and 2-HES 402 on SW face with X on top, from which

A saw stump, 30 ins. dia. by 3 ft. high, bears N13°E, 25.7 ft. (38.9 lks.) dist., scribe 2 HES 402 and 5 HES 403 BT is visible.

A saw stump, 29 ins. dia. by 3 ft. high, bears S7°E, 24.7 ft. (37.4 lks.) dist., scribe overgrown.

A larch, 15 ins. dia., bears S26°W, 44.5 ft., scribe overgrown (origin unknown).

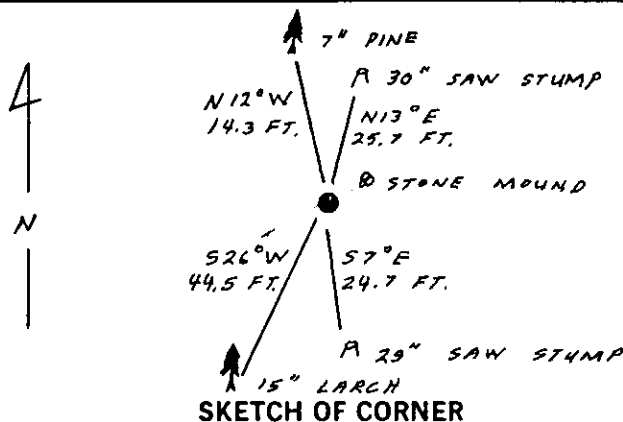
A lodgepole pine, 7 ins. dia., bears N12°W, 14.3 ft. dist., scribe 5 HES 403 BT is visible.

Scattered mound of stone, NE, 5 ft. dist.

- III. Painted red bands around the bearing trees and attached Land Survey Monument and Bearing Tree signs.

Set a 6 ft. galvanized steel guard post with Land Survey Marker and Property Boundary decals, N22°E, 3 ft.

Magnetic Declination: 20°30' East



CERTIFICATION

I, Gary C. Crismon
 certify the information shown herein is true and correct.

Signature of Gary C. Crismon
 Signature Ground Party Chief

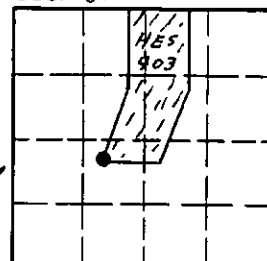
I, Alvah F. Hughes
 certify that this Corner Record correctly represents work performed by me or under my direction in compliance with the "Corner Recordation Act" (70-22-101, et seq., M.C.A.).

Signature of Alvah F. Hughes
 Date: 12/20/89 Reg. No. 7322 LS
 Employer: U.S. FOREST SERVICE

Office of Clerk and Recorder, County of Lincoln. This "corner record" was filed for record on Dec 29, 1989 was noted on the cross-index plat and is assigned page No. 4174, in book No. _____

Cross Index No. 5 HES 403 T. 36 N. R. 31 W. P.M.M.

Sec. 31



• - corner this sheet