

## INSTRUCTIONS

1. Original and/or subsequent record used to evaluate the corner position.
2. Description of evidence found, note discrepancies in the record, state method of establishing lost or obliterated corners.
3. Description of monument and accessories set to perpetuate the corner position.
4. Sketch of corner, show all pertinent data which can best be shown in a sketch example, corner marking, topography ties, position of accessories, etc.
5. Certification must be signed and sealed by Land Surveyor registered in the State of Montana.
6. Fill in Cross Index & Section Diagram at bottom of sheet.

## CERTIFIED CORNER RECORDATION

Corner 3 of HES 403 T. 36 N. R. 31 W. P.M.M. Lincoln County

- I. 1915, original HES record by Fred E. Thieme: "Set for Cor. No. 3, a small stone, marked with a cross (x) under a trap rock, 27x16x7 ins., 17 ins. in the ground, marked 3 H.E.S. 403 on W. face and a cross (x) on top for the exact corner point, from which

A cross (x) on a larch tree, 10 ins. dia., bears  $S82^{\circ}30'W$ , 61 lks. dist.

A cross (x) on a larch tree, 13 ins. dia., bears  $N49^{\circ}30'W$ , 53 lks. dist.; each blazed and scribed 3 H.E.S. 403 BT.

Raise a mound of stone, 4 ft. base, 2 ft. high, W. of corner."

- II. Found a firmly set stone, 12x6 ins., 10 ins. out of ground, marked 3-HES 403 on W. face and x on top, from which

A saw stump, 15 ins. dia. by 1.5 ft. high, bears  $S84^{\circ}W$ , 40.0 ft. (60.6 lks.) dist., no visible scribe.

A saw stump, 19 ins. dia. by 33 ins. high, bears  $N48^{\circ}W$ , 35.1 ft. (53.2 lks.), scribe 403 is visible.

A mound of stone, 3 ft. base by 18 ins. high, West, 4.5 ft. dist.

- III. Established two new bearing trees:

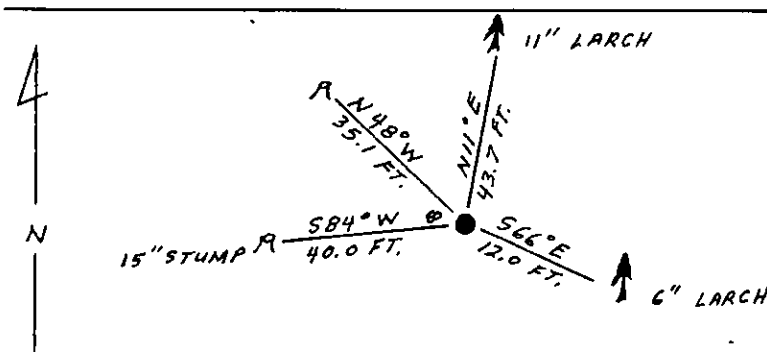
A larch, 11 ins. dia., bears  $N11^{\circ}E$ , 43.7 ft. dist., scribed 3 HES 403 BT.

A larch, 6 ins. dia., bears  $S66^{\circ}E$ , 12.0 ft. dist., scribed X BT.

Painted red bands around the bearing trees and attached Land Survey Monument and Bearing Tree signs.

Set a 6 ft. galvanized steel guard post with Land Survey Marker and Property Boundary decals, South, 3 ft.

Magnetic Declination:  $20^{\circ}30'$  East



SKETCH OF CORNER

## CERTIFICATION

I, Gary C. Crismon  
certify the information shown herein is true and correct.

Gary C. Crismon  
Signature Ground Party Chief

I, Alvah F. Hughes  
certify that this Corner Record correctly represents work performed by me or under my direction in compliance with the "Corner Recordation Act" (70-22-101 et seq., M.C.A.)

Alvah F. Hughes  
Signature of Surveyor & Seal

Date: 12/14/89 Reg. No. 73200

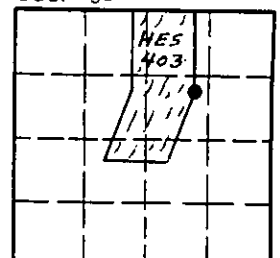
Employer: U.S. FOREST SERVICE

Office of Clerk and Recorder, County of Lincoln. This "corner record" was filed for record on Dec 29, 1989

was noted on the cross-index plat and is assigned page No. 4172, in book No. \_\_\_\_\_

Cross Index No. 3 HES 403 T. 36 N R. 31 W P.M.M.

Sec. 31



• - corner this sheet