

INSTRUCTIONS

1. Original and/or subsequent record used to evaluate the corner position.
2. Description of evidence found, note discrepancies in the record, state method of establishing lost or obliterated corners.
3. Description of monument and accessories set to perpetuate the corner position.
4. Sketch of corner, show all pertinent data which can best be shown in a sketch example, corner marking, topography ties, position of accessories, etc.
5. Certification must be signed and sealed by Land Surveyor registered in the State of Montana.
6. Fill in Cross Index & Section Diagram at bottom of sheet.

CERTIFIED CORNER RECORDATION

Corner 1 of HES 403 T. 36 N. R. 31 W. P.M.M. Lincoln County

- I. 1915, original HES record by Fred E. Thieme: "Set for cor. no. 1, a small stone marked with a cross (x) under a quartzite stone, 24x13x8 ins., 14 ins. in the ground, marked 1 H.E.S. 403 on SE. face, and a cross (x) on top for the exact corner point, from which

A cross (x) on a larch tree, 32 ins. dia., bears $N53^{\circ}43'E$, 53 lks. dist.

A cross (x) on a larch tree, 44 ins. dia., bears $S62^{\circ}25'E$, 14 lks. dist.; each blazed and scribed 1 H.E.S. 403 BT.

Raise a mound of stone, 4 ft. base, 2 ft. high, SE. of corner."

- II. Found a displaced stone, 21x12x5 ins., marked 1 HES 403 and (x) on top. Stone is leaning against a fence brace pole. By record distance-distance intersects from bearing tree remains the corner point falls on a 7x9 ins. fence corner post, from which

A saw stump, 32 ins. dia. by 3 ft. high, bears $N54^{\circ}E$, 35.0 ft. (53 lks.) dist., scribe HES 403 BT is visible.

A saw stump, 41 ins. dia. by 3 ft. high, bears $S59^{\circ}E$, 9.2 ft. (14 lks.) dist., scribe HES 403 is visible.

- III. Established two new bearing trees:

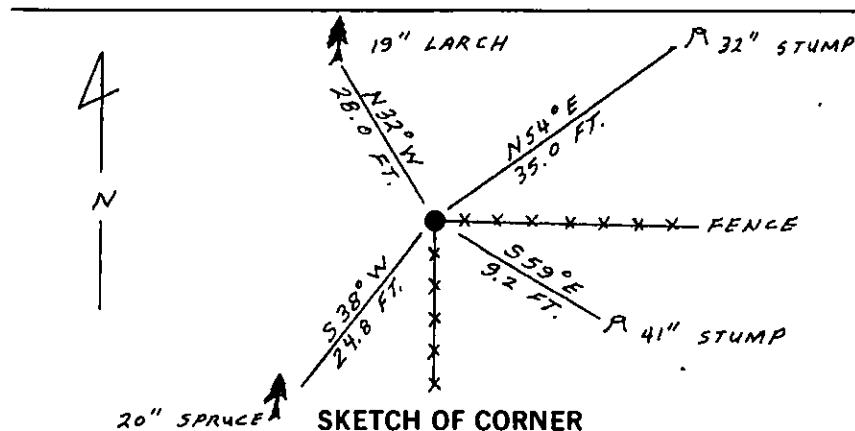
A spruce, 20 ins. dia., bears $S38^{\circ}W$, 24.8 ft. dist., scribed X BT.

A larch, 19 ins. dia., bears $N32^{\circ}W$, 28.0 ft. dist., scribed 1 HES 403 BT.

Painted red bands around the bearing trees and attached Land Survey Monument and Bearing Tree signs.

Set a 6 ft. galvanized steel guard post with Land Survey Marker and Property Boundary decals, South. 3 ft.

Magnetic Declination: $20^{\circ}30'$ East



CERTIFICATION

I, Gary C. Crismon
certify the information shown herein is true and correct.

Gary C. Crismon
Signature Ground Party Chief

I, Alvah P. Hughes
certify that this Corner Record correctly represents work performed by me or under my direction in compliance with the "Corner Recordation Act" (70-22-101, et seq. M.C.A.)

Alvah P. Hughes
Signature of Surveyor & Seal

Date: 12/14/89 Reg. No. 7324

Employer: U.S. FOREST SERVICE

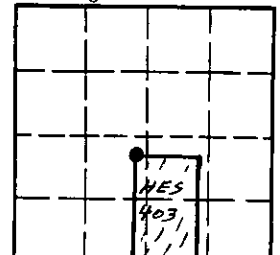
Office of Clerk and Recorder, County of Lincoln. This "corner record" was filed for record on Dec 29, 1989

was noted on the cross-index plat and is assigned page No. 4171, in book No. _____

Cross Index No. 1 HES 403 T. 36 N R. 31 W P.M.M.

Adopted July 1, 1981, Montana Board of Professional Engineers & Land Surveyors

Sec. 30



• - corner this sheet