

## INSTRUCTIONS

1. Original and/or subsequent record used to evaluate the corner position.
2. Description of evidence found, note discrepancies in the record, state method of establishing lost or obliterated corners.
3. Description of monument and accessories set to perpetuate the corner position.
4. Sketch of corner, show all pertinent data which can best be shown in a sketch example, corner marking, topography (ies), position of accessories, etc.
5. Certification must be signed and sealed by Registered Land Surveyor in State of Montana.
6. Fill in Cross Index & Section Diagram at bottom of sheet.

## CERTIFIED CORNER RECORDATION

Corner            Corner No. 11 H.E.S. No. 1131 36N R. 31W P.M.M. Lincoln County

## Record:

Cor. # 1 H.E.S. # 1131- Place a small stone marked with a cross (x) under a granite stone 32 X 12 X 8 inches 22 inches in the ground, marked 11 H.E.S. 1131 on S.E. face, and a cross (x) on top for the exact corner point from which

A cross (x) on a Lodgepole pine tree 14 inches diameter bears S 43°00'E 40 links distance.

A cross (X) on a Lodgepole pine tree 8 inches diameter bears S 47°00'W. 42 links distance, each blazed and scribed 11 H.E.S. 1131 B.T.

Raise a mound of earth 4 feet base, 2 feet high S.E. of corner.

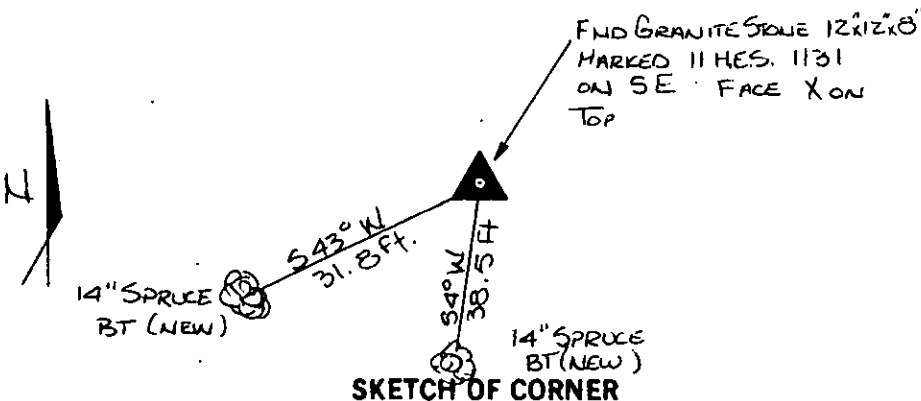
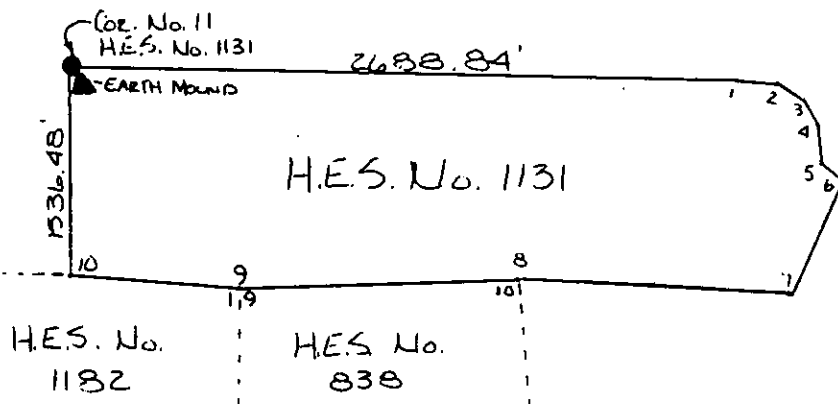
Found: Granite Stone 32" X 12" X 8" , 22" in the ground, marked 11 H.E.S. 1131 on the S.E. face with an X on top

## Set:

A 14" Spruce bears S 43°W 31.8 feet scribed 11 H.E.S. 1131 and posted (new)

A 14" Spruce bears S 4°W 38.5 feet scribed 11 H.E.S. 1131 B.T. and posted (new)

Painted monument and accessories with bright red paint.



SKETCH OF CORNER

CERTIFICATION  
Jack H. Ninneman

I, Jack H. Ninneman  
certify the information shown herein is true and correct.

Jack H. Ninneman  
Signature Ground Party Chief

Jack H. Ninneman

I, Jack H. Ninneman  
certify that this Corner Record correctly represents work performed by me or under my direction in compliance with the "Corner Recordation Act" (70-22-101, et seq., M.D.A.)

Jack H. Ninneman  
Signature of Surveyor & Seal

Date: DEC. 82 Reg. No. 4661S

Employer: Ninneman Engineering Inc.

Office of Clerk and Recorder, County of LINCOLN. This "corner record" was filed for record on the DEC. 30 day of 1982 was noted on the cross-index plat and is assigned page No. 2140, in book No.           

Eleanor L. Vaughn by Betty L. Conner  
County Official deputy

Cross Index No.            T. 36N R. 31W P.M.M.

Sec.           

H.E.S. 1131
UNSURVEYED
SECTION

• corner this sheet