

## INSTRUCTIONS

1. Original and/or subsequent record used to evaluate the corner position.
2. Description of evidence found, note discrepancies in the record, state method of establishing lost or obliterated corner.
3. Description of monument and accessories set to perpetuate the corner position.
4. Sketch of corner, show all pertinent data which can best be shown in a sketch example, corner marking, topography ties, position of accessories, etc.
5. Certification must be signed and sealed by Registered Land Surveyor in State of Montana.
6. Fill in Cross Index & Section Diagram at bottom of sheet.

## CERTIFIED CORNER RECORDATION

Corner Corner No. 10, H.E.S. No. 1131 T. 36N R. 31W P.M.M. Lincoln County

## Record:

Corner # 10 H.E.S. #1131- Place a small stone marked with a cross (X) under an iron post 36 inches long 2 inches diameter, 24 inches in the ground, with a brass cap marked 1922 10, H.E.S. 1131, and a point on top for the exact corner point, from which

A cross (x) on a Spruce tree 8 inches diameter bears N8°30'E 35 links distance.

A cross (x) on a Spruce tree 7 inches diameter bears East 38 links distance, each blazed and scribed 19 H.E.S. 1131 B.T.

Raise a mound of stone 4 foot base, 2 feet high N.E. of corner.

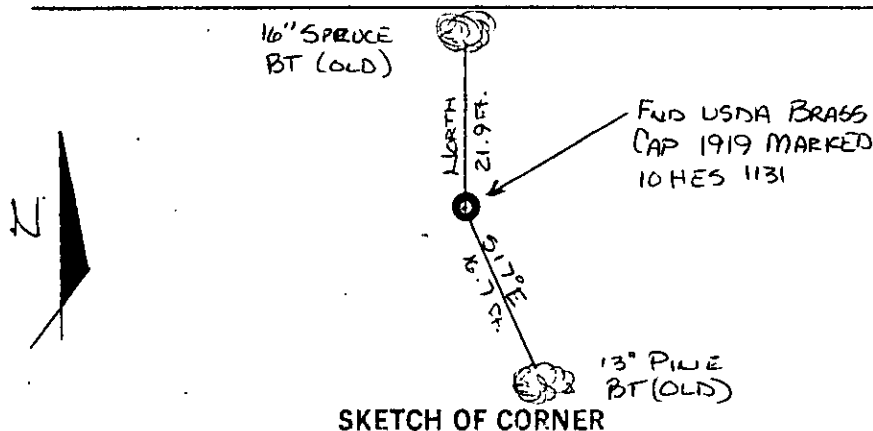
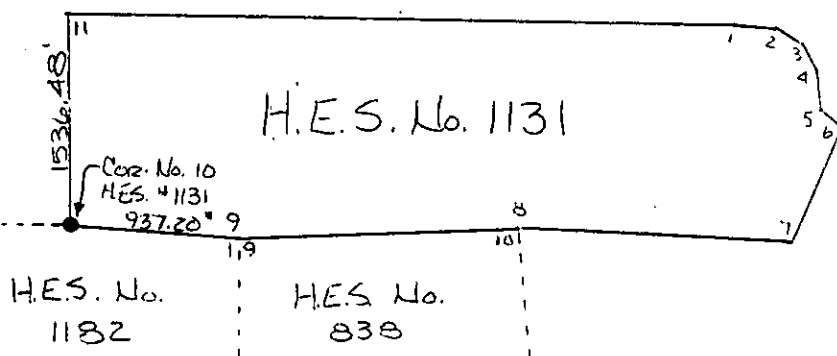
Found: U.S.D.A. Forest Service brass cap marked 1919 10 H.E.S. 1131 from which

A 16" Spruce bears North 21.9 feet scribing overgrown

A 13" Pine bears S17°E 16.7 feet scribed 5 H.E.S. 1182

Set: Posted bearing trees.

Painted monument and accessories with bright red paint.



## CERTIFICATION

1. Jack H. Ninneman  
certify the information shown hereto is true and correct.

Jack H. Ninneman  
Signature of Ground Party Chief

1. Jack H. Ninneman  
certify that this Corner Record correctly represents work performed by me or under by direction in compliance with the "Corner Recordation Act" (70-22-101, et seq., M.D.A.)

Jack H. Ninneman  
Signature of Surveyor & Seal

Date: DEC. 82 Reg. No. 4661

Employer: Ninneman Engineering Inc.

Office of Clerk and Recorder, County of LINCOLN. This "corner record" was filed for record on the DEC. 30 day of 1982 was noted on the cross-index plat and is assigned page No. 2138, in book No. Eleanor L. Vaughn by Betty L. Conces County Official deputy

Sec. -
H.E.S. 113
UNSURVEYED
SECTION