

## INSTRUCTIONS

1. Original and/or subsequent record used to evaluate the corner position.
2. Description of evidence found, note discrepancies in the record, state method of establishing lost or obliterated corners.
3. Description of monument and accessories set to perpetuate the corner position.
4. Sketch or corner, show all pertinent data which can best be shown in a sketch example, corner marking, topography ties, position of accessories, etc.
5. Certification must be signed and sealed by Registered Land Surveyor in State of Montana.
6. Fill in Cross Index & Section Diagram at bottom of sheet.

## CERTIFIED CORNER RECORDATION

Corner Corner No. 4 H.E.S. No. 1061 T. 36N R. 31W P.M.M. Lincoln County

Record: Corner #4 H.E.S. # 1061 A small stone marked with a cross (x) under a feldspar stone, 24 X 12X 7 inches, 14 inches in the ground, marked 2 H.E.S. 275 and 4 H.E.S. 1061 on SE and SW faces, and a cross (x) on top for the exact corner point, from which, A cross (x) on a Spruce tree, 30 inches, diameter, bears N.  $59^{\circ}40'E.$ , 93 links distance. (old B.T.)  
A cross (x) on a Spruce tree, 20 inches diameter, bears  $S59^{\circ}32'W.$ , 11 links distance. (old B.T.), each blazed and scribed 4 H.E.S. 1061 B.T.

Raise a mound of earth and stone, 4 foot base, 2feet high, S.W. of corners.

Found: stone, buried under ground, 1' X 7" with an (x) on top marked 4 H.E.S. 1061 on S.E. face. Ground frozen unable to look for additional markings.

A 6' high stump bears N  $59^{\circ}E$  61.5 feet, scribing not legible. Posted.

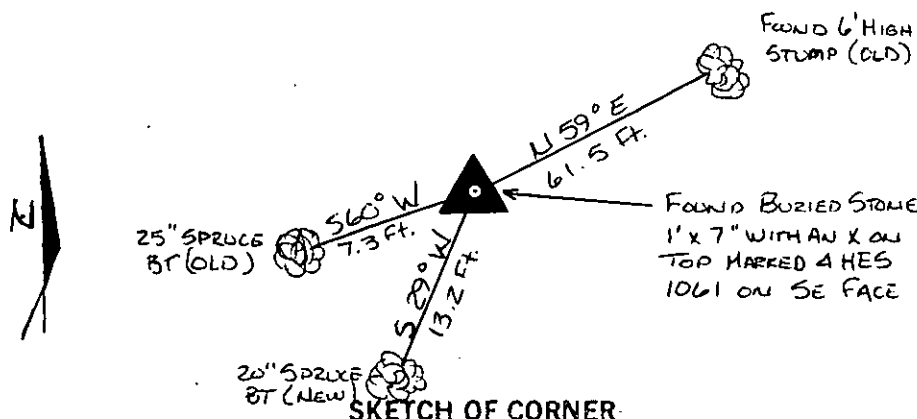
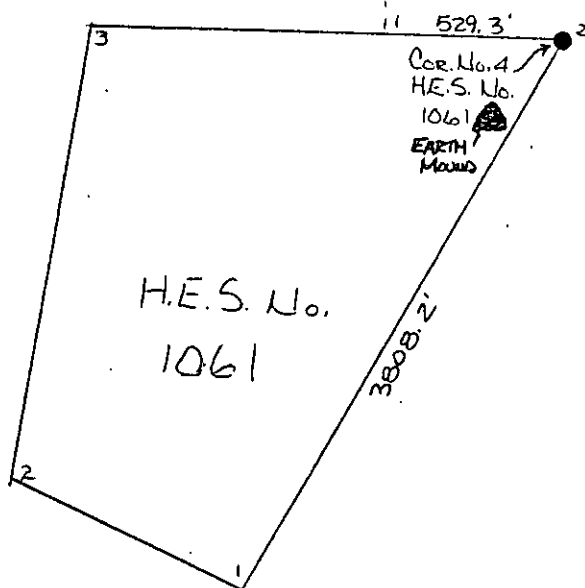
A 25" Spruce bears S  $60^{\circ}W$  7.3 feet scribing overgrown. Posted.

Set: A 20" Spruce bears S  $29^{\circ}W$  13.2 feet scribed 4 H.E.S. 1061 B.T. and posted.

H.E.S. No.

232

Painted monument and accessories with bright red paint.



SKETCH OF CORNER

## CERTIFICATION

I, Jack H. Ninneman

certify the information shown herein is true and correct.

Jack H. Ninneman  
Signature Ground Party Chief

I, Jack H. Ninneman

certify that this Corner Record correctly represents work performed by me or under my direction in compliance with the "Corner Recordation Act" (70-22-101, et seq., M.D.A.)

Jack H. Ninneman  
Signature of Surveyor & Seal

Date: Dec. 82 Reg. No. 4661S

Employer: Ninneman Engineering Inc.

Office of Clerk and Recorder, County of LINCOLN. This "corner record" was filed for record on the DEC. 30 day of 1982 was noted on the cross-index plat and is assigned page No. 2137, in book No. \_\_\_\_\_

Eleanor L. Vaughn by Betty L. Conner  
County Official deputy

Sec.

H.E.S. 1061
UNSURVEYED
SECTION