

INSTRUCTIONS

1. Original and/or subsequent record used to evaluate the corner position.
2. Description of evidence found, note discrepancies in the record, state method of establishing lost or obliterated corners.
3. Description of monument and accessories set to perpetuate the corner position.
4. Sketch or corner, show all pertinent data which can best be shown in a sketch example, corner marking, topography ties, position of accessories, etc.
5. Certification must be signed and sealed by Registered Land Surveyor in State of Montana.
6. Fill in Cross Index & Section Diagram at bottom of sheet.

CERTIFIED CORNER RECORDATION

Corner Corner # 3 H.E.S. No. 1061 T. 36N R. 31W P.M.M. Lincoln County

Record: Corner # 3 H.E.S. 1061. Place a small stone, marked with a cross (x) under a granite stone, 25 X 11 X 6 inches, 15 inches in the ground, marked 3 H.E.S. 1061 on S.E. face and a cross (x) on top for the exact corner point, from which,

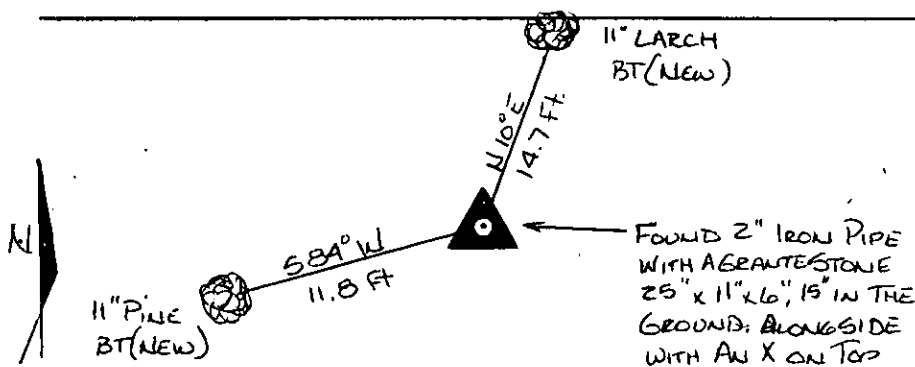
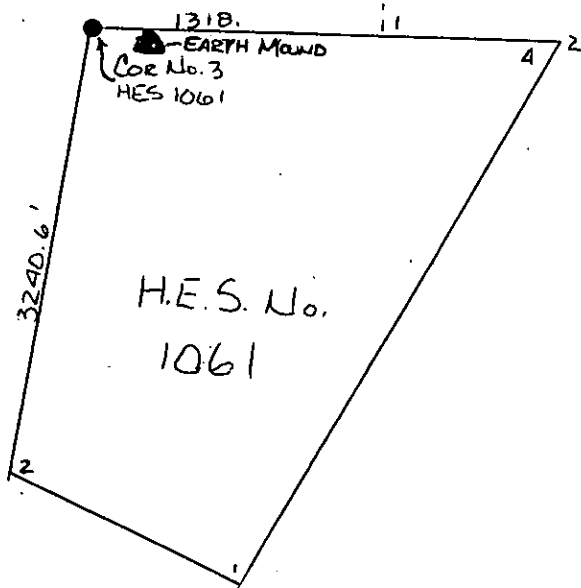
A cross (x) on a Balsam fir tree, 7 inches diameter, bears S. $36^{\circ}20'W.$, 30 links distance.

A cross (x) on a Balsam fir tree, 5 inches diameter bears N. $24^{\circ}00'E.$, 17 links distance each blazed and scribed 3 H.E.S. 1061 B.T.

Raise a mound of earth and stone, 4 foot base 2 feet high, S.E. of Corner.

Found: a 2" Iron Pipe with a granite stone 25" X 11" X 6", 15" in the ground, alongside. (x) marked on top of stone.

Set: An 11" Pine bears S $84^{\circ}W$ 11.8 feet scribed 3 H.E.S. 1061 B.T. and posted.
An 11" Larch bears N $10^{\circ}E$ 14.7 feet scribed 3 H.E.S. 1061 B.T. and posted. Painted monument and accessories with bright red paint.



SKETCH OF CORNER

CERTIFICATION

1. Jack H. Ninneman

certify the information shown herein is true and correct.

Jack H. Ninneman
Signature Ground Party Chief.

1. Jack H. Ninneman

certify that this Corner Record correctly represents work performed by me or under my direction in compliance with the "Corner Recordation Act" (70-22-101, et seq., M.D.A.)

Jack H. Ninneman
Signature of Surveyor & Seal

Date: Dec. 82 Reg. No. 4661S

Employer: Ninneman Engineering Inc.

Office of Clerk and Recorder, County of LINCOLN. This "corner record" was filed for record on the DEC. 30 day of 1982 was noted on the cross-index plat and is assigned page No. 2136, in book No. _____

Eleanor L. Vaughn by Betty L. Conner
County Official deputy

Sec.

H.E.S. 1061
UNSURVEYED
SECTION

Cross Index No. _____ T. 36N R. 31W PMM

• corner this sheet