

## INSTRUCTIONS

1. Original and/or subsequent record used to evaluate the corner position.
2. Description of evidence found, note discrepancies in the record, state method of establishing lost or obliterated corners.
3. Description of monument and accessories set to perpetuate the corner position.
4. Sketch or corner, show all pertinent data which can best be shown in a sketch example, corner marking, topography ties, position of accessories, etc.
5. Certification must be signed and sealed by Registered Land Surveyor in State of Montana.
6. Fill in Cross Index & Section Diagram at bottom of sheet.

## CERTIFIED CORNER RECORDATION

Corner Corner No. 3 H.E.S. No. 487 T. 36N R. 31W P.M.M. Lincoln County

## Record:

Corner #3 H.E.S. #487 - A small stone, marked with a cross (x) under a quartzite stone, 24 X 8 X 7 inches, 14 inches in the ground, marked 3 H.E.S. 487 on N.E. face, and a cross (x) on top for the exact corner point, from which

A cross (x) on a Larch tree, 11 inches diameter, bears S.  $17^{\circ}20'W.$ , 49 links distance.

A cross (x) on a Larch tree 12 inches diameter, bears N  $22^{\circ}41'W.$ , 42 links distance, each blazed and scribed 3 H.E.S. 487 B.T.

Raise a mound of earth, 4 feet base, 2 feet high, N.E., of corner.

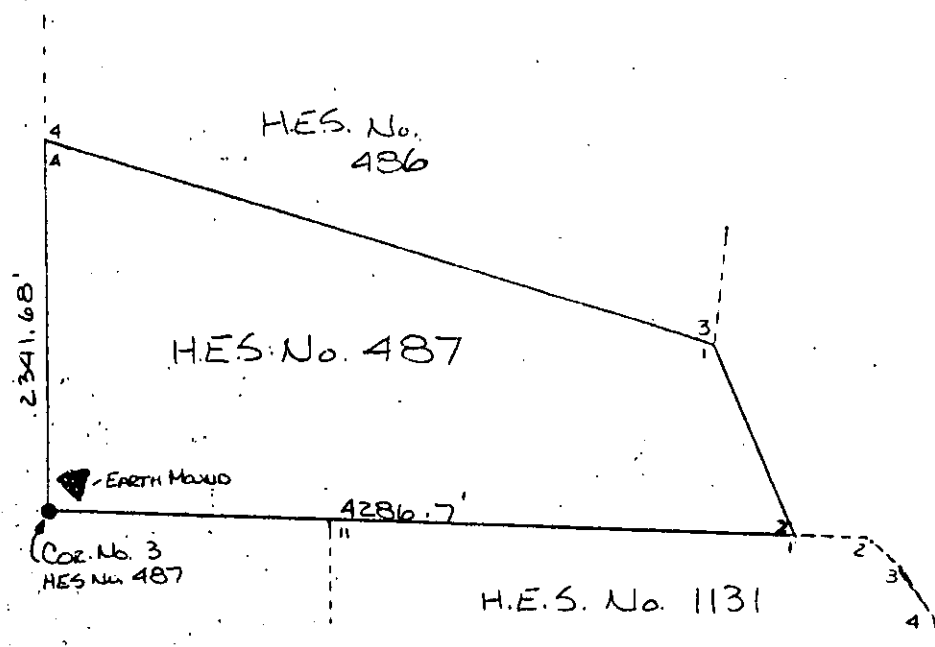
Found: A stone  $3\frac{1}{2}$ " X 1" marked 3 H.E.S. 487 on Northeast face with an X on top from which,

A 24" Larch bears N  $22^{\circ}41'W$  42 links scribed 3 H.E.S. 487 B.T. and posted. Old B.T.

A 20" Larch bears S  $17^{\circ}30'W$  32.0 feet scribed 3 H.E.S. 487 B.T. and posted. Old B.T. B.T. signs both sides of tree by T.C.H. 7-12-78

A location poster on a 10" Pine bears S  $68^{\circ}W$  5 feet, bearing was shown S  $68^{\circ}E$ . Changed sign to fit bearing.

Painted accessories with bright red paint.



## CERTIFICATION

I, Jack H. Ninneman

certify the information shown herein is true and correct.

Jack H. Ninneman  
Signature Ground Party Chief

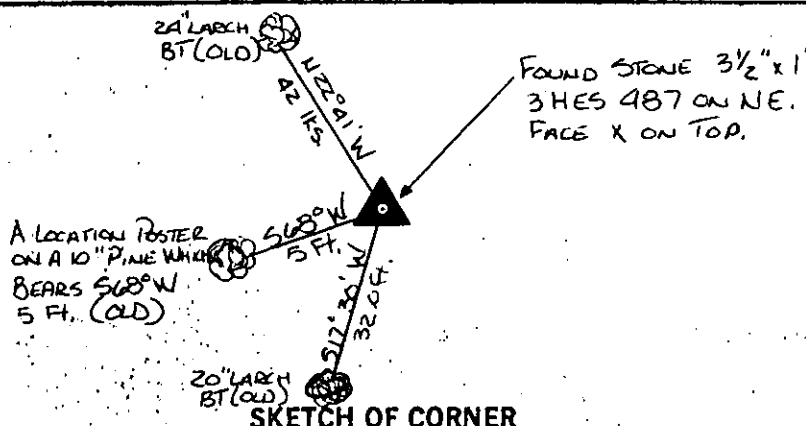
I, Jack H. Ninneman

certify that this Corner Record correctly represents work performed by me or under my direction in compliance with the "Corner Recordation Act" (70-22-101, et seq., M.D.A.)

Jack H. Ninneman  
Signature of Surveyor & Seal

Date: Dec. 82 Reg. No. 4661S

Employer: Ninneman Engineering Inc.



SKETCH OF CORNER

Office of Clerk and Recorder, County of LINCOLN. This "corner record" was filed for record on the DEC. 30 day of 1982 was noted on the cross-index plat and is assigned page No. 2133, in book No. \_\_\_\_\_

Eleanor L. Vaughn by Betty L. Conces  
County Official deputy

Sec. 7

H.E.S. 487
UNSURVEYED
SECTION 14

Cross Index No. \_\_\_\_\_ T. 36N R. 31W P.M.M.

• corner this sheet