

INSTRUCTIONS
1. Original and/or sub...
2. Description of evidence found, note discrepancies in the record, state method of establishing foot on corner position.
3. Location of monument and accessories as set to perpetuate the corner position.
4. Sketch of corner, show all pertinent data which can best be shown in a sketch example, corner marking, topography, etc., position of accessories, etc.
5. Certification must be signed and sealed by Registered Land Surveyor in State of Montana.
6. Fill in Cross Index & Location Diagram at bottom of sheet.

CERTIFIED CORNER RECORDATION

Corner Corner No. 1 H.E.S. 486 T. 36N R. 31W P.M.M. Lincoln County

Corner # 1 H.E.S. # 486= A small stone, marked with a cross (x) under a quartzite stone, 29 X 10 X 8 inches, 19 inches in the ground, marked 1 H.E.S. 486 on S.W. face, and a cross (x) on top for the exact corner point, from which

A cross (x) on a Lodgepole pine tree, 9 inches diameter, bears N 71° 47' W., 128 links distance.

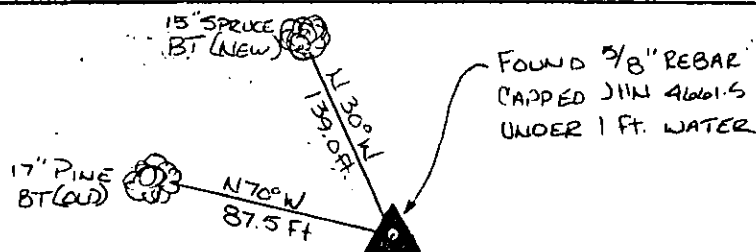
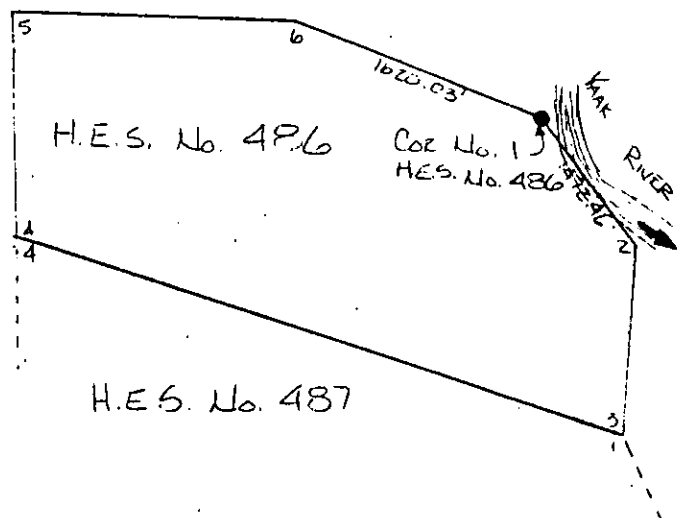
A cross (x) on a Lodgepole pine tree, 12 inches diameter, bears N. 40° 50' W., 161 links distance, each blazed and scribed 1 H.E.S. 486 B.T.

Raise a mound of earth, 4 foot base, 2 feet high. SW of corner

Found: A 5/8" capped rebar by J.H.N. 4661S under 1 foot of water from which, A 17" Pine bears N. 70° W. 87.5 feet scribed 6 H.E.S. 483 1 H.E.S. 486 B.T. and posted (old B.T.)

Set: A 15" Spruce bears N. 30° W. 139.0 feet scribed H.E.S. 486 B.T. and posted (new B.T.)
Painted all accessories with bright red paint.

SEE REVERSE



SKETCH OF CORNER

CERTIFICATION

I, Jack H. Ninneman
certify the information shown herein is true and correct.

Jack H. Ninneman
Signature Ground Party Chief

I, Jack H. Ninneman

certify that this Corner Record correctly represents work performed by me or under my direction in compliance with the "Corner Recordation Act" (70-22-101, et seq., M.D.A.)

Jack H. Ninneman
Signature of Surveyor & Seal

Date: Dec. 82 Reg. No. 4661S

Employer: Ninneman Engineering Inc.

Office of Clerk and Recorder, County of LINCOLN. This "corner record" was filed for record on the DEC. 30 day of 1982 was noted on the cross-index plat and is assigned page No. 2132, in book No. _____

Eleanor L. Vaughn by Betty L. Conces
County Official deputy

Cross Index No. _____ T. 36N R. 31W P.M.M.

Sec.

H.E.S. 486
UNSURVEYED
SECTION

• corner this sheet

JUSTIFICATION FOR LOCATION OF MONUMENT SET TO PERPETUATE THE LOCATION OF CORNER NO. 1

HES 486 RESTABLISHED BY J.H. NINNEMAN IN 1977.

At the time of survey both of the original bearing trees were existing. (The 12" Lodgepole Pine reported to bear N 40°50'W 161 links has since been destroyed). Using the bearing and distance from said 12" Lodgepole Pine hit exactly at the call distance (2.55 chs.) on a line extended from corner No. 6 of HES 486 through found corner No. 5 of the Upper Ford Ranger Station. Using the calls from the still existing bearing tree (a 9" Lodgepole Pine bearing N 71°47'W 128 links) did not hit the extended line nor the 2.55 chs. call from corner No. 5 of the Upper Ford Ranger Station. Further evidence of the True location of the corner was evidenced by the location of the found stone which had washed away from it's original location. The location of the corner as witnessed by the still existing tree was undisturbed while the stone was laying in the river clearly washed from its intended location.

Due to channel washing, this corner now falls approximately 7 feet from the river bank into the river and could be occupied only in very low water.

Jack H. Ninneman Registration #4661S

Jack H. Ninneman

