

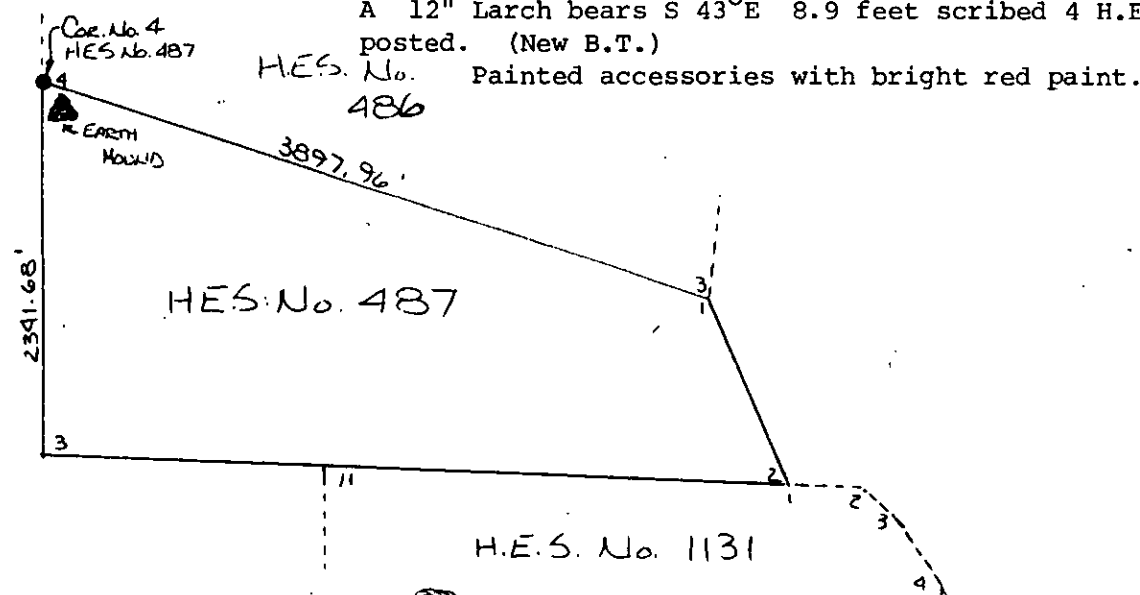
- INSTRUCTIONS
1. Original and/or subsequent record used to evaluate the corner position.
 2. Description of evidence found, note discrepancies in the record, state method of establishing lost or obliterated corners.
 3. Description of monument and accessories set to perpetuate the corner position.
 4. Sketch or corner, show all pertinent data which can best be shown in a sketch example, corner marking, topography ties, position of accessories, etc.
 5. Certification must be signed and sealed by Registered Land Surveyor in State of Montana.
 6. Fill in Cross Index & Section Diagram at bottom of sheet.

CERTIFIED CORNER RECORDATION

Corner Corner No. 4 HES No. 487 T. 36 N R. 31W P.M.M. Lincoln County

1. Corn. #4 HES #487- A granite stone 10 X 12 X 10 inches above ground, as set by me on October 3, 1915, I mark this stone for Corn. No. 4, 4.H.E.S. 487 on SE, face, from the cross (x) on top
A cross (x) on a lodgepole Pine tree, 8 inches diameter, bears N. $7^{\circ}25'E.$, 30 links distance.
A cross (x) on a Lodgepole Pine tree, 9 inches diameter bears S. $60^{\circ}41'E.$, 59 links distance, each blazed and scribed 4 H.E.S. 487 B.T.
Raise a mound of earth, 4 feet base, 2 feet high SE of corner.
2. Cor. #4 H.E.S. # 486 A small stone, marked with a cross (x) under a granite stone, 24 X 12 X 10 inches 14 inches in the ground marked 4 H.E.S. 486 on NE face and a cross (X) on top for the exact corner point, from which
A cross (x) on a Lodgepole pine tree, 8 inches , diameter bears N. $7^{\circ}25'E.$ 30 links distance.
A cross (x) on a lodgepole pine tree, 9 inches diameter, bears S. $60^{\circ}41'E.$, 59 links distance, each blazed and scribed 4 H.E.S. 486 B.T.
Raise a mound of earth, 4 feet base, 2 feet high, N.E. of corner.
3. Found: A 9" X 9" X 9" stone marked 4 H.E.S. 486 on the East side with an X on top.
No bearing trees found.

4. Set: An 8" Pine bears North 22.2 feet scribed 4 H.E.S. 486 B.T. and posted. (New B.T.)
A 12" Larch bears S $43^{\circ}E$ 8.9 feet scribed 4 H.E.S. 487 B.T. and posted. (New B.T.)
Painted accessories with bright red paint.



SKETCH OF CORNER

CERTIFICATION

I, Jack H. Ninneman
certify the information shown herein is true and correct.

Jack H. Ninneman
Signature Ground Party Chief

I, Jack H. Ninneman
certify that this Corner Record correctly represents work performed by me or under by direction in compliance with the "Corner Recordation Act" (70-22-101, et seq., M.D.A.)

Jack H. Ninneman
Signature of Surveyor & Seal

Dec. 82 46615
Date: _____ Reg. No. _____

Employer: Ninneman Engineering Inc.

Office of Clerk and Recorder, County of LINCOLN. This "corner record" was filed for record on the DEC. 30 day of 1982 was noted on the cross-index plat and is assigned page No. 2131, in book No. _____

Eleanor L. Vaughn by Betty L. Conces
County Official deputy

Sec.	
HES 487	
UNSURVEYED	
SECTION	