

INSTRUCTIONS

1. Original and/or subsequent record used to evaluate the corner position.
2. Description of evidence found, note discrepancies in the record, state method of establishing lost or obliterated corners.
3. Description of monument and accessories set to perpetuate the corner position.
4. Sketch or corner, show all pertinent data which can best be shown in a sketch example, corner marking, topography ties, position of accessories, etc.
5. Certification must be signed and sealed by Registered Land Surveyor in State of Montana.
6. Fill in Cross Index & Section Diagram at bottom of sheet.

CERTIFIED CORNER RECORDATION

Corner Corner No. 6 H.E.S. No. 486 T. 36N R. 31W P.M.M. Lincoln County

RECORD:

Corner #6 H.E.S. #486- a quartzite stone 10 X 12 X 8 inches above ground, as set by me on September 9, 1915, I mark this stone for Corner No. 6 H.E.S. 486 on SW face, from the cross (x) on top.

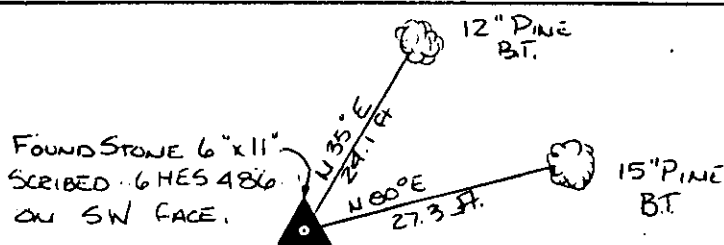
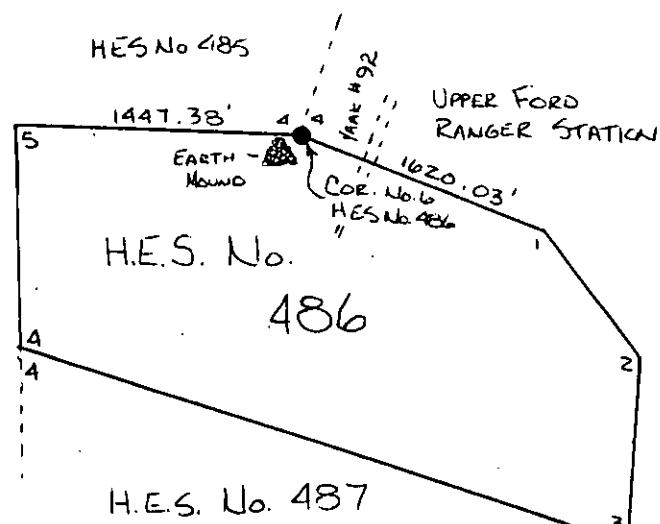
A cross (x) on a lodgepole pine tree, 12 inches diameter, bears N. 52°24'E., 11 links distance.

A cross (x) on a Lodgepole pine tree, 12 inches diameter, bears S. 66°07'E., 50 links distance, each blazed and scribed 6 H.E.S. 486 B.T.

Raise a mound of earth, 4 foot base, 2 feet high, SW of corner.

Found: Stone 6" X 11" scribed 6 HES 486 on the Southwest face from which,
A 12" Pine bears N.35°E 24.1 feet scribed W. R 4 and posted.
A 15" Pine bears N 80°E 27.3 feet scribed S.R 4 and posted.

Set: Painted accessories with bright red paint.
Replaced B.T. signs.



SKETCH OF CORNER

CERTIFICATION

Jack H. Ninneman

I, Jack H. Ninneman, certify the information shown herein is true and correct.

Jack H. Ninneman
Signature Ground Party Chief

Jack H. Ninneman

I, Jack H. Ninneman, certify that this Corner Record correctly represents work performed by me or under my direction in compliance with the "Corner Recordation Act" (70-22-101, et seq., M.D.A.)

Jack H. Ninneman
Signature of Surveyor & Seal

Dec. 82 4661S

Date: Dec. 82 Reg. No. 4661S

Employer: Ninneman Engineering Inc.

Office of Clerk and Recorder, County of LINCOLN. This "corner record" was filed for record on the DEC. 30 day of 1982 was noted on the cross-index plat and is assigned page No. 2130, in book No. Eleanor L. Vaughn by Betty L. Conces
County Official deputy

Sec.

H.E.S. 486
UNSURVEYED
SECTION

Cross Index No. 36 T. 36 R. 31 PMM

• corner this sheet