

INSTRUCTIONS

1. Original and/or subsequent record used to evaluate the corner position.
2. Description of evidence found, note discrepancies in the record, state method of establishing lost or obliterated corners.
3. Description of monument and accessories set to perpetuate the corner position.
4. Sketch or corner, show all pertinent data which can best be shown in a sketch example, corner marking, topography ties, position of accessories, etc.
5. Certification must be signed and sealed by Registered Land Surveyor in State of Montana.
6. Fill in Cross Index & Section Diagram at bottom of sheet.

CERTIFIED CORNER RECORDATION

Corner Corner No. 1 H.E.S. No. 282 T. 36N R. 31W P.M.M. Lincoln County

Record: Corner #1 H.E.S. 282: I set for Corner No. 1, a black Pine post 6 X 6 X 42 inches, 30 inches in the ground, marked 1 H.E.S. 282 on NE face and a nail in top for exact corner point from which

A cross (x) on a Spruce 12 inches diameter bears N.34°20'W. 11 links distance.

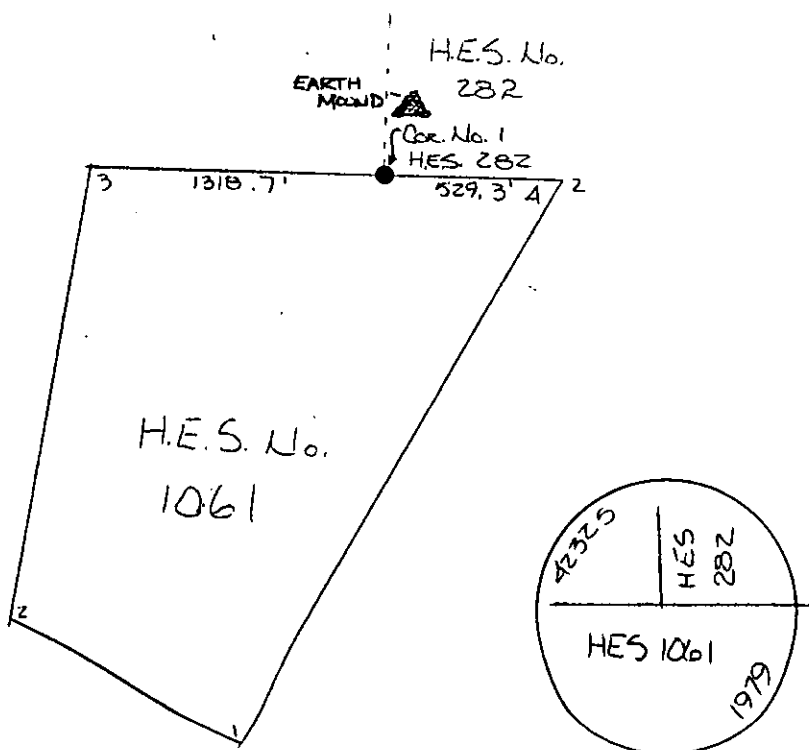
A cross (x) on a black pine 10 inches diameter bears N.32°6'E 25 links distance, each blazed and scribed 1 H.E.S. 282 B.T. Raise a mound of earth 4 foot base, 2 feet high N.E. of corner.

Found: A brass cap marked as shown below. No bearing trees found.

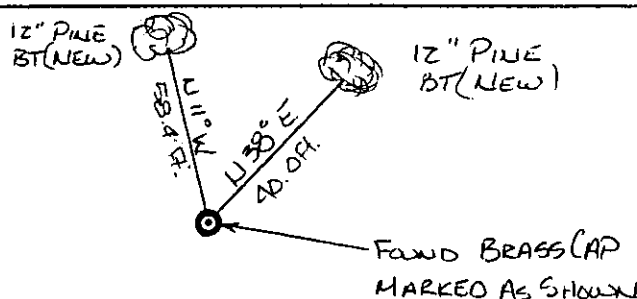
Set: a 12" Pine bears N 11°W 58.4 feet scribed 1 H.E.S. 282 B.T. and posted.

A 12" Pine bears N 38°E 40.0 feet scribed 1 H.E.S. 282 B.T. and posted.

Painted monument and accessories with bright red paint.



Found brass cap marked as shown



SKETCH OF CORNER

CERTIFICATION

I, Jack H. Ninneman,
certify the information shown herein is true and correct.

Jack H. Ninneman
Signature of Ground Party Chief

I, Jack H. Ninneman,
certify that this Corner Record correctly represents work performed
by me or under my direction in compliance with the "Corner
Recordation Act" (70-22-101, et seq., M.D.A.).

Jack H. Ninneman
Signature of Surveyor & Seal

Date: Dec. 82 Reg. No. 4661S

Employer: Ninneman Engineering Inc.

Office of Clerk and Recorder, County of LINCOLN. This "corner
record" was filed for record on the DEC. 30 day of 1982
was noted on the cross-index plat and is assigned page No. 2129, in
book No. _____

Eleanor L. Vaughn by Betty L. Conces
County Official deputy

Sec.	
H.E.S. 282	
UNSURVEYED	
SECTION	