

INSTRUCTIONS

1. Original and/or subsequent record used to evaluate the corner position.
2. Description of evidence found, note discrepancies in the record, state method of establishing lost or obliterated corners.
3. Description of monument and accessories set to perpetuate the corner position.
4. Sketch or corner, show all pertinent data which can best be shown in a sketch example, corner marking, topography ties, position of accessories, etc.
5. Certification must be signed and sealed by Registered Land Surveyor in State of Montana.
6. Fill in Cross Index & Section Diagram at bottom of sheet.

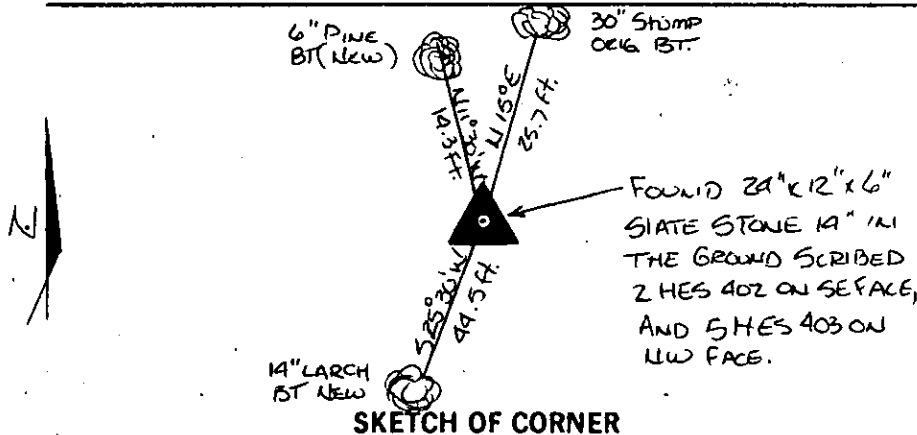
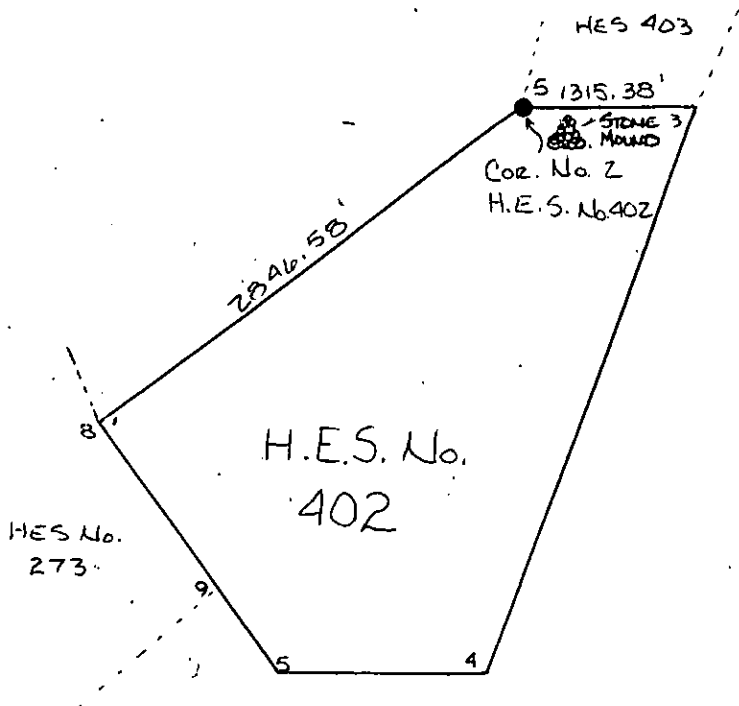
CERTIFIED CORNER RECORDATION

Corner Cor. No. 2 HES 402 T. 35,36N R. 32W P.M.M. Lincoln County.

Record: Cor#2 HES 402- I set for Cor. No. 2 a small stone marked with a cross (x) under a slate stone 24x12x6 ins., 14 ins. in the ground, marked 2 H.E.S. 402 on SE. face, and a cross(x) on top for the exact corner point, from which
A cross(x) on a larch tree, 30 ins.dia.,bears N.12°05' E., 39 lks. dist.
A cross(x) on a larch tree, 13 ins. dia.,bears S.8°00'E., 36 lks. dist., each blazed and scribed 2 HES 402 BT
Raise a mound of stone, 4 ft.base, 2 ft, high,SE. of corner.

Found: A slate stone 24"x12"x6", 14" in the ground with an (x) on top scribed 2 HES 402 on SE face and 5 HES 403 on NW face from which,
A 30" BT stump bears N15°E 25.7 feet scribed 2 HES 402 and 5 HES 403. posted.

Set: A 6" Pine bears N11°30'W 14.3 feet scribed 5 HES 403 and posted.
A 14" Larch bears S25°30'W 44.5 feet scribed 2 HES 402 and posted.
Painted monument and accessories with bright red paint.



SKETCH OF CORNER

CERTIFICATION

I, Jack H. Ninneman
certify the information shown herein is true and correct.
Jack H. Ninneman
Signature Ground Party Chief
I, Jack H. Ninneman
certify that this Corner Record correctly represents work performed by me or under my direction in compliance with the "Corner Recordation Act" (70-22-101, et seq., M.D.A.)
Jack H. Ninneman
Signature of Surveyor & Seal
Date: Dec. 82 Reg. No. 4661S.
Employer: Ninneman Engineering Inc.

Office of Clerk and Recorder, County of LINCOLN. This "corner record" was filed for record on the Dec. 30 day of 1982 was noted on the cross-index plat and is assigned page No. 2121, in book No. Eleanor L. Vaughn by Betty L. Condis County Official deputy

Sec.	
<u>HES 402</u>	
<u>UNSURVEYED</u>	
<u>SECTION</u>	

Cross Index No. 35N 36N T. 35N R. 32W P.M.M.

• corner this sheet