

Corner 3 HES 1061 T. 36 N. R. 31 W. P.M.M. LINCOLN County

- I. 1921 U. S. Forest Service survey of HES 1061 by Grant Higgins: Place a small stone marked with a cross (X) under a granite stone, 25X11X8 ins. 15 ins. in the ground, marked 3 HES 1061 on SE face and cross (X) on top for the exact corner point, from which:

A cross (X) on a balsam fir tree, 7 ins. dia., bears S36°20'W, 30 lks. dist.
A cross (X) on a balsam fir tree, 5 ins. dia., bears N24°00'E, 17 lks. dist., each
blazed and scribed 3 HES 1061 BT.

Raise a mound of earth 4 ft. base, 2 ft. high, S.E. of Corner.

1982 Certified Corner Recordation by Jack H. Ninneman, MT Reg. No. 4661S: Found 2" iron pipe with a granite stone 25"X11"X6", 15" in the ground, alongside. (X) marked on top of stone.

Set: A 11 in. Pine, bears S84°W, 11.8 feet scribed 3 H.E.S. 1061 BT and posted.
A 11 in. Larch, bears N10°E, 14.7 feet scribed 3 H.E.S. 1061 BT and posted.

Painted monument and accessories with bright red paint.

- II. Found: 2" iron pipe next to a stone, 12X6 ins., 9 ins. above ground, mkd. 3 HES 1061 on the SE face and an X on top, from which:

A larch, 16 ins. diam., bears N10°E, 15.2 ft. dist. mkd. with a healed face. (Rec:14.7 ft.)
A dead lodgepole pine, 10 ins. diam., bears S84°W, 11.8 ft. dist., mkd. 3 HES 1061 BT.

mound of stone, 4 ft. base, 2 ft. high, S.E. of corner

- III. Established 1 new bearing tree:

A douglas fir, 10 ins. diam., bears N87°W, 19.1 ft. dist., mkd. 3 HES 1061 BT.

Painted the scribed faces red and 6 in. wide red bands around the bearing trees. Attached Land Survey Monument and Bearing Tree signs. Set 6 ft. steel posts 3 ft. East, with "Land Survey Monument" and Property Boundary" decals attached.

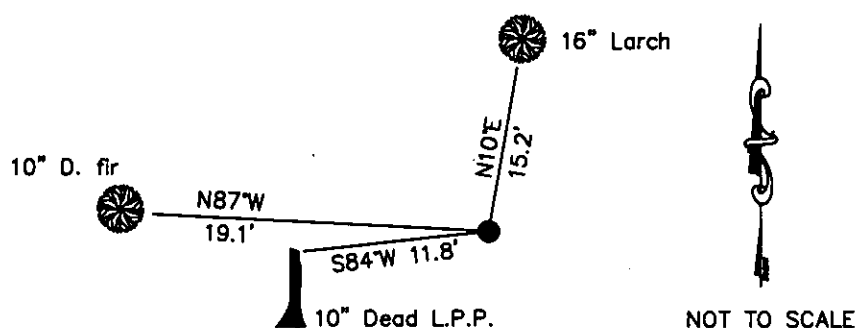
Date of Fieldwork: 9/11/2012

Survey crew: Tom Hommel, Alex Bluhm

Magnetic declination: 20° East assumed

Equipment used: Hand compass and loggers tape

U.S. Forest Service, Supervisors Office, 31374 Hwy. 2, Libby, MT 59923 (406) 293-6211



CERTIFICATION

I, _____, certify the information shown herein is true and correct.

Signature of Deputy Chief

Thomas, M. Hommel, 10806LS
I, _____, certify that this Corner Record correctly represents work performed by me or under my direction in accordance with the "Corner Recordation Act" (70-22-101, et seq., M.C.A.)

Signature of Surveyor

Date: 11/24/12 Reg. No. 10806LS

Employer: U. S. Forest Service

Office of Clerk and Recorder, County of Lincoln

242094 BOOK: CCR CC&R'S PAGE: 11996 Pages: 1
STATE OF MONTANA LINCOLN COUNTY
RECORDED: 11/27/2012 2:40 KOI: CC&R'S
TAMMY D. LAUER CLERK AND RECORDER
FEE: \$0.00 BY *Francis D. Lauer*
FOR: US FOREST SERVICE 31374 HWY 2, LIBBY, MONTANA 59923,

Cross Index No. 3 HES 1061 T. 36N. R. 31W. P.M., MT

Adopted July 1, 1981, Montana Board of Professional Engineers & Land Surveyors

COR 3
HES 1061

● corner this sheet