

Corner 1 HES 282 T. 36 N. R. 31 W. P.M.M. LINCOLN County

- I. 1912 U. S. Forest Service survey of HES 282 by Elmer R. Johnson: Set for Cor. No. 1, a black pine post, 6X6X42 ins., 30 ins. in the ground, marked 1 HES 282 on NE face and a nail on top for the exact corner point, from which:

A cross (X) on a spruce, 12 ins. dia., bears N34°20'W, 11 lks. dist.
A cross (X) on a black pine, 10 ins. dia., bears N32°6'E, 25 lks. dist., each
blazed and scribed 1 HES 282 BT.

Raise a mound of earth 4 ft. base, 2 ft. high, NW of cor.

1978 Certificate of Survey No. 546 by Melvin D. Lauteren. MT Reg. No. 4232S: Set brass cap, Cor. #1 HES #282 by single proportion.

1982 Certified Corner Recordation by Jack H. Ninneman. MT Reg. No. 4661S: Found brass cap marked as shown below. No bearing trees found.

- II. Set: A 12 in. Pine, bears N11°W, 58.4 feet scribed 1 H.E.S. 282 BT and posted.
A 12 in. Pine, bears N38°E, 40.0 feet scribed 1 H.E.S. 282 BT and posted.

Painted monument and accessories with bright red paint.

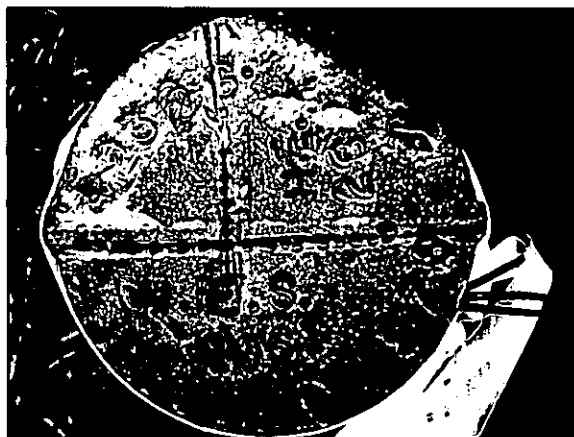
- III. Found: 2 in. diam iron pipe, firmly set, 2 ins. above
ground with 2 1/2 in diam. brass cap marked as shown below, from which:

A dead lodgepole pine, 10 ins. diam., bears N38°E, 40.0 ft. dist., mkd. 1 HES 282 BT.
A lodgepole pine, 12 ins. diam., bears N11°W, 58.4 ft. dist. mkd. 1 HES 282 BT.

Established 1 new bearing tree:

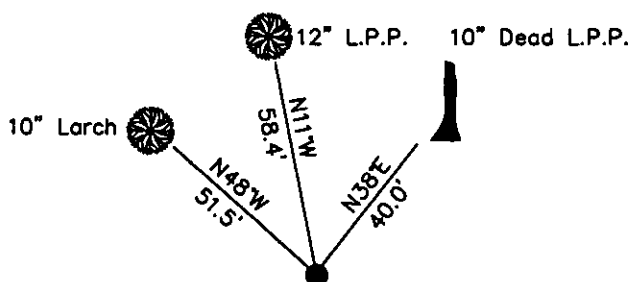
A larch, 10 ins. diam., bears N48°W, 51.5 ft. dist., mkd. 1 HES 282 BT.

Painted the scribed faces red and 6 in. wide red bands around the bearing trees. Attached Land Survey Monument and Bearing Tree signs. Set 6 ft. steel posts 3 ft. West, with "Land Survey Monument" and Property Boundary" decals attached.



Date of Fieldwork: 6/14/2012
Survey crew: Tom Hommel, Alex Bluhm
Magnetic declination: 20° East assumed
Equipment used: Hand compass and loggers tape

U.S. Forest Service, Supervisors Office, 31374 Hwy. 2, Libby, MT 59923 (406) 293-6211



NOT TO SCALE

CERTIFICATION

I, Thomas M. Hommel, certify the information shown herein to be true and correct.

Signature Ground Party Chief Thomas M. Hommel
I, Thomas M. Hommel, certify that this Corner Record correctly represents work performed by me or under my direction in accordance with the "Corner Recordation Act" (MCA 22-2-01, et seq., M.C.A.)

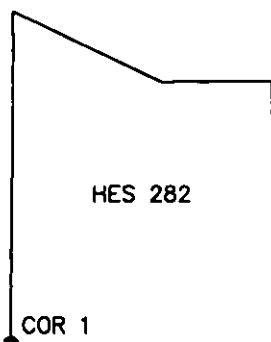
Signature of Surveyor & Seal Thomas M. Hommel
Date: 11/26/12 Reg. No. 10800LS
Employer: U. S. Forest Service

Office of Clerk and Recorder, County of Lincoln

242093 BOOK: CCR CC&R'S PAGE: 11995 Pages: 1
STATE OF MONTANA LINCOLN COUNTY
RECORDED: 11/27/2012 2:35 KOI: CC&R'S
TAMMY D. LAUER CLERK AND RECORDER
FEE: \$0.00 BY: Thomas M. Hommel
FOR US FOREST SERVICE 31374 HWY 2, LIBBY, MONTANA 59923,

Cross Index No. 1 HES 282 T. 36N. R. 31W. P.M., MT

Adopted July 1, 1981, Montana Board of Professional Engineers & Land Surveyors



● corner this sheet