

Corner 4 HES 275 T. 36 N. R. 31 W. P.M.M. LINCOLN County

I. 1914 Forest Service survey of H.E.S. 275. by Elmer R. Johnson: To Cor. No. 4:

Set a quartzite stone 26x14x10 ins., 16 ins. in the ground, marked 4 HES 275 on NW face, and a cross (X) on top for the exact cor. point, from which:

A cross (X) on a larch, 30 ins. dia., bears S30°26'W, 18 lks dist.

A cross (X) on a red fir, 10 ins. dia., bears N72°55'W, 40 lks dist., each blazed and scribed 4 HES 275 BT.

Raise a mound of earth 4 ft. base, 2 ft. high, NW of cor.

II. Found a stone 17x8 ins., 9 ins. above ground firmly set with 4 HES 275 on NW face and an "X" on top, from which:

A larch, 32 ins. diam, bears S30°W, 10.6 ft. dist., mkd. with a healed face. (Rec: 11.9 ft.)

A Douglas fir stump, 22 ins. diam, bears N73°W, 25.5 ft. dist., with no visible marks. (Rec: 26.4 ft.)

III. Establish 1 new bearing tree:

A Douglas fir, 16 ins. diam, bears S68°E, 9.4 ft. dist., mkd. with an "X" on a snow blaze and 4 HES 275 BT.

Painted the scribed faces red and 6 in. wide red bands around the bearing trees. Attached Land Survey Monument and Bearing Tree signs. Set a 6 ft. steel guard post 3 ft. N24°00'39"E with Property Boundary and Land Survey Monument decals attached.

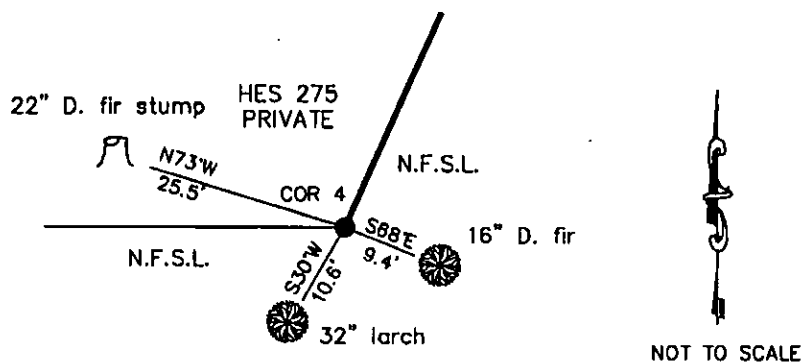
Date of Fieldwork: 5/25/2011

Survey crew: Tom Hommel

Magnetic declination: 20° East assumed

Equipment used: Hand compass and loggers tape

U.S. Forest Service, Supervisors Office, 31374 Hwy. 2, Libby, MT 59923 (406) 293-6211



CERTIFICATION

Thomas M. Hommel, 10800LS
certify the information shown herein to be true and correct.

Signature of Third Party (if any)

Marc Burkhardt, 9520LS
certify that this Corner Record was prepared or supervised by me or under my direction in compliance with the "Corner Recordation Act" (MCA) at the time of recording.

Signature of Surveyor & Seal

Date: 3/6/2012

Employer: U. S. Forest Service

Office of Clerk and Recorder, County of Lincoln

237805 BOOK: CCR CC&R'S PAGE: 11955 Pages: 1

STATE OF MONTANA LINCOLN COUNTY

RECORDED: 03/20/2012 8:32 KOI: CC&R'S

TAMMY D. LAUER CLERK AND RECORDER

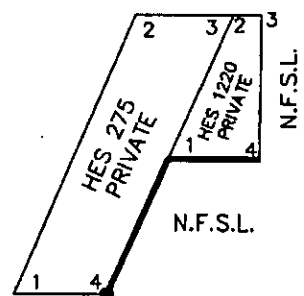
FEE: \$0.00

BY: *Glennie Davis*

TO: US FOREST SERVICE 31374 HWY 2, LIBBY, MONTANA 59923,

Cross Index No. 4 HES 275 T. 36N. R. 31W. P.M., MT

Adopted July 1, 1981, Montana Board of Professional Engineers & Land Surveyors



● corner this sheet