

Corner 4 HES 1220 T. 36 N. R. 31 W. P.M.M. LINCOLN County

- I. 1923 Forest Service survey of H.E.S. 1220. by J. F. Pfau: Listing corner No. 4, marked and witnessed as described by the District Forester. I destroy the listing cor. and its accessories, and in its place establish Cor. No. 4 of this survey as follows:

Place a small stone marked with a cross (X) under a quartzite stone 24x8x8 ins., 14 ins. in the ground, marked 4 HES 1220 on NW face, and a cross (X) on top for the exact cor. point, from which:

A cross (X) on a lodgepole pine tree, 6 ins. dia., bears S48°30'W, 22 lks dist.

A cross (X) on a lodgepole pine tree, 6 ins. dia., bears N27°00'W, 10 lks dist., each blazed and scribed 4 HES 1220 BT.

Raise a mound of earth 4 ft. base, 2 ft. high, NW of cor.

- II. Found a stone 8x8 ins., 11 ins. above ground firmly set with 4 HES 1220 on NW face and an "X" on top. Mound of earth NW of corner.

- III. Establish 2 new bearing trees:

A larch, 22 ins. diam, bears S7°E, 20.8 ft. dist., mkd. with an "X" on a snow blaze and 4 HES 1220 BT.

A pine, 15 ins. diam, bears S86°E, 23.0 ft. dist., mkd. with an "X" on a snow blaze and 4 HES 1220 BT

Painted the scribed faces red and 6 in. wide red bands around the bearing trees. Attached Land Survey Monument and Bearing Tree signs. Set a 6 ft. steel guard post 3 ft. West with Property Boundary and Land Survey Monument decals attached.

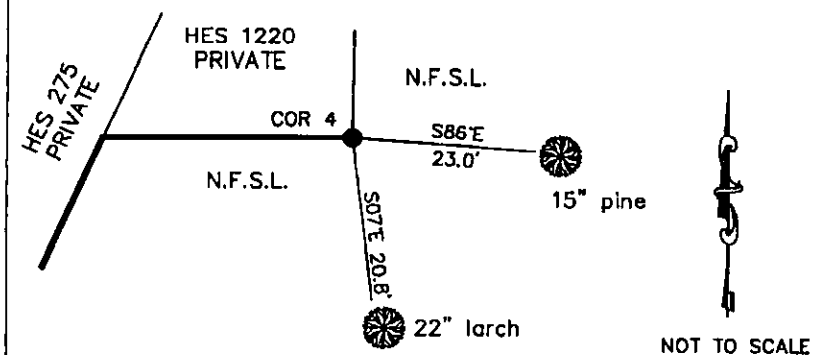
Date of Fieldwork: 5/25/2011

Survey crew: Tom Hommel

Magnetic declination: 20° East assumed

Equipment used: Hand compass and loggers tape

U.S. Forest Service, Supervisors Office, 31374 Hwy. 2, Libby, MT 59923 (406) 293-6211



CERTIFICATION

I, Thomas M. Hommel, 10800LS  
certify the information herein is true and correct.

Signature of Ground Party Chief

Mary Burkhardt, 9520LS  
certify that this corner was correctly represented work performed by me or under my direction in compliance with the "Corner Records Act" (22-10-101 MCA).

Signature of Surveyor at Seal

Date: 3/6/2012 License No. 9520LS

Employer: U.S. Forest Service

Office of Clerk and Recorder, County of Lincoln

237804 BOOK: CCR CC&R'S PAGE: 11954 Pages: 1

STATE OF MONTANA LINCOLN COUNTY

RECORDED: 03/20/2012 8:31 KOI: CC&R'S

TAMMY D. LAUER CLERK AND RECORDER

FEE: \$0.00

BY: Deanne Stennis Deputy

TO: US FOREST SERVICE 31374 HWY 2, LIBBY, MONTANA 59923,

Cross Index No. 4 HES 1220 T. 36N. R. 31W. P.M., MT

Adopted July 1, 1981, Montana Board of Professional Engineers & Land Surveyors

