

CERTIFIED LAND CORNER RECORDATION

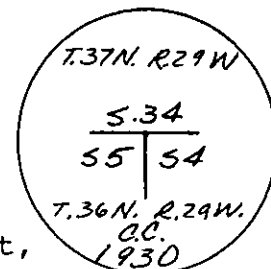
Corner CC Sections 5 & 4 T. 36 N., R. 29 W., P.M.

RECORD: Set an Iron Post, 3 ft. long, 2 inches diameter, 28 inches in the ground, for closing corner of Sections 4 and 5, with brass cap marked:

From which:

A Pine, 16 inches diameter bears S 89 1/2° E, 21 lks. distant, marked T. 36 N., R. 29 W., S 4 CC BT

A Pine, 8 inches, diameter bears S 61° W., 9 lks. distant, marked T. 36 N., R. 29 W., S 5 CC BT



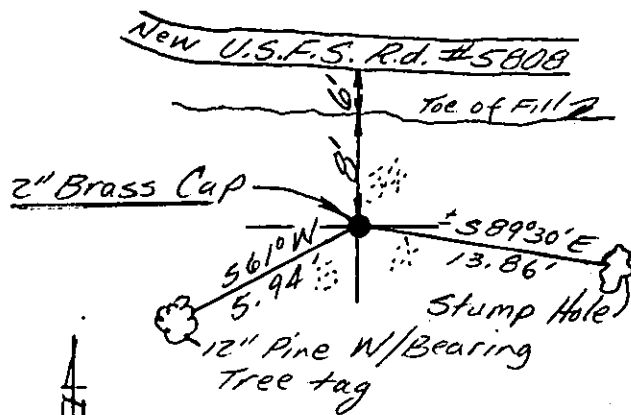
FOUND: An iron post 2 inches in diameter with brass cap stamped as noted above,

From which:

A Pine, 12" in diameter bears S 59° W, 5.50 ft. distant marked and scribed per record. Also has a new BT sign attached.

Also found a large stump hole in the area of the original bearing tree described as a 16" Pine. This tree was removed during construction of a new Forest Service logging road.

Work Performed: I reset the original pipe and brass cap at the record bearing and distance from the found bearing tree. The large stump hole in the vicinity of the record 16" bearing tree was impossible to use accurately. No new bearing trees were marked at this time.



Declination 20° East
DIAGRAM OF CORNER

I, Charles T. Landman
certify that the information shown herein is true and correct.

Charles T. Landman
Signature of Ground Party Chief

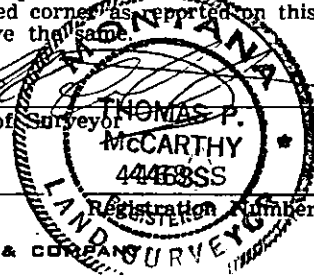
I, Thomas P. McCarthy
certify that I have carefully performed or reviewed the work done on the diagrammed corner as reported on this recordation form and approve the same.

Thomas P. McCarthy
Signature of Surveyor

6/12/79

Date

BORENSON & COMPANY



Office of Clerk and Recorder, County of Lincoln

This "corner record" was filed for record on the 14th day of June 1979, was noted on the cross-index plat and is assigned page No. 546, in book No.

Eleanor L. Vaughn, by Betty Rose, Deputy
County Official

Cross Index No. A-9 T. 36 N. R. 29 W. Mer.