

# CERTIFIED CORNER RECORDATION

Corner S 1/4 Sec. 36 T. 36 N R. 28 W P.M., MT. Lincoln County

I. 1904 Original G.L.O. survey of the S. bdy of T. 36 N., R. 28 W. by Abraham L. Rinearson et al: Set a limestone, 13 x 12 x 8 ins., 9 ins. in the ground, for 1/4 sec. cor., marked. 1/4 on N. face, from which:

A tamarack, 16 ins. diam., bears N 31 1/4°W, 55 lks. dist., mkd. 1/4 S 36 BT.

A tamarack, 20 ins. diam., bears S 46°W, 18 lks. dist., mkd. 1/4 S 1 BT.

1930 Retracement of the South Boundary of T. 36 N., R. 28 W. by William A. Bandy et al: The 1/4 sec. cor. of secs. 1 and 36, which is a limestone 10 x 5 x 4 ins. above ground, firmly set, marked and witnessed as described in the official record. This corner will hereafter refer to sec. 36 only, therefore, I erase the marks on the SW. bearing tree, and mark a new one as follows:

A tamarack, 12 ins. diam., bears N 35 1/2°E, 57 lks. dist., mkd. 1/4 S 36 BT.

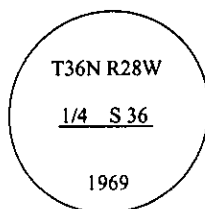
1969 B.L.M. remonumentation by Roy G. Leedy: The 1/4 sec. cor. of secs. 36, on the S. bdy. of the Tp., monumented with a limestone, 13 x 12 x 8 ins., firmly set, marked 1/4 on the N. face, and witnessed by the remains of the original bearing trees:

A larch, 14 ins. diam., bears N 33°E, 57 lks. dist., mkd. 1/4 S 36 BT. (Record: N 35 1/2°E)

A stump, bears N 31 1/4°W, 55 lks. dist., mkd. 36 BT.

At the corner point

Set an iron post, 30 ins. long, 2 1/2 ins. diam., 24 ins. in the ground, with brass cap mkd.



from which:

A fir, 8 ins. diam., bears N 62 1/4°W, 22 lks. dist., mkd 1/4 S 36 BT.

Bury the original stone alongside the iron post.

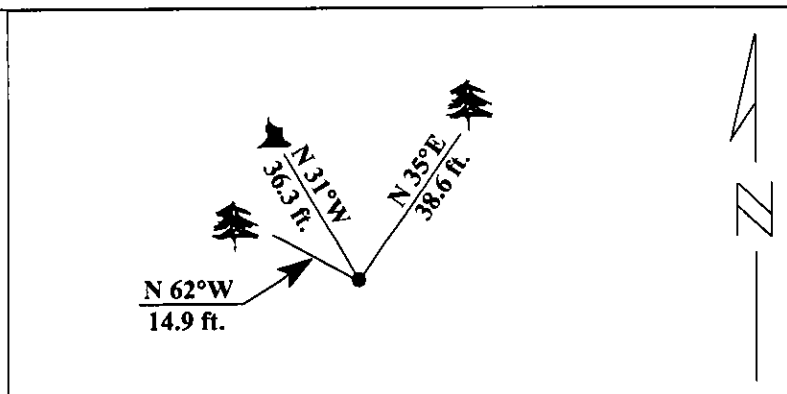
II. Found a 2 1/2 in. diam. iron pipe, 6 ins. above ground, firmly set, with a 3 1/4 in. diam. brass cap, mkd. as shown above, from which:

A stump, bears N 31°W, 36.3 ft. (55 lks.) dist., with no visible marks. (G.L.O.)

A fir, 15 ins. diam., bears N 35°E, 38.6 ft. (58.5 lks.) dist., with visible scribe marks. (Rec: larch, 57 lks.)

A fir, 9 ins. diam., bears N 62°W 14.9 ft. (22.6 lks.) dist., mkd with a healed face. (Rec: 22 lks.)

III. Painted red bands around the bearing trees and attached Land Survey Monument and Bearing Tree signs.  
Magnetic Declination: 20° East.



SKETCH OF CORNER

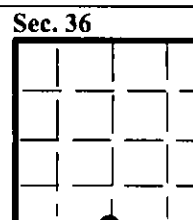
CERTIFICATION  
I, Thomas M. Hommel  
certify the information shown herein is true and correct.

Signature Ground Party Chief  
I, Ronald A. Pearson  
certify that this Corner Record correctly represents work performed by me or under my direction in compliance with the "Corner Recordation Act" (70-22-101, et seq., M.C.A.)

Signature of Surveyor & Seal  
[Signature]

Date: 1/29/96  
Reg. No.: 9008LS  
Employer U.S. FOREST SERVICE

Office of Clerk and Recorder, County of LINCOLN. This "corner record" was filed for record on AUG 21, 1997 was noted on the cross-index plat and is assigned page No. 9907 in book No. CORAL M. CUMMINGS By DLB  
County Official



● - corner this sheet